

LANGLADE COUNTY U.S. PUBLIC LAND CORNER RESTORATION

The Southwest corner of Section 15, T. 32 N., R. 10 E., Langlade County, WI.

Corner was: (check all that apply)

32.10.160000

- Restored through acceptance of an obliterated evidence location.
- Restored through acceptance of a found perpetuated location.
- Determined to be lost and re-established through proportionate methods.
- Show bearings and distances to PLSS corners used for proportioning, and show original distances).
- Restored/recovered/re-established in a location that differs from a previously established position.
- (Show difference in plan view below).
- Check here if addition information is shown on the reverse side of this form.

Describe record evidence, recovered physical evidence, occupational evidence, testimonial evidence and all other evidence considered in the recovery/restoration of the corner.

The original corner was established in 1860 by Hiram C. Fellows. Original bearing trees: tamarac, 10", N34°W, 12 links, and a tamarac, 12", S52°E, 41 lks. In 1901, WebleyBrooks, surveyed the south line of Section 16 and part of the south line of Section 15. For this corner, he "found old BT down" and made new BT's: tamarac, 14", N 13° E, 42 links, and a tamarac, 12", N 24 1/2° W, 125.5 links.
12/09/99 D. Tlusty, D. Williams. Accepted centerline of Ormsby Road, at a point in line with a very old, downed fence to the south as the best evidence of the corner. This position fits Webleys distances very good.
See map #10527 for distances.

Physical description of the monument set:

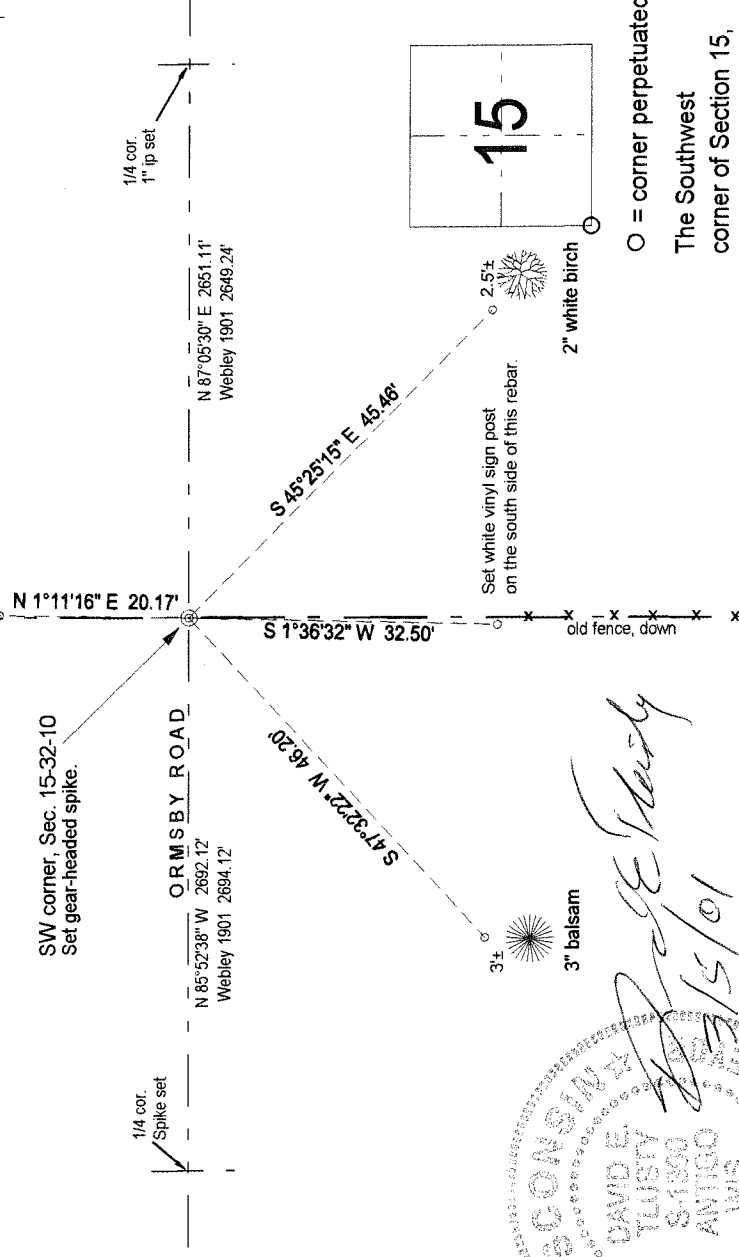
Set a gearheaded spike for the corner.

Describe the accessories used to perpetuate the corner. Include a plan view drawing and accessories found/set. Describe measuring point on bearing trees. Show any topographic features that would aid in future recovery of the corner.

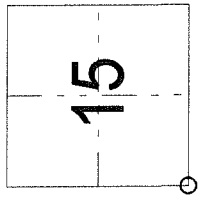
LEGEND

- Bearing trees are measured to a nail in a low blaze on the side of the tree shown.
- BT's painted blue.
- The bearings magnetic with hand compass.
- 3/4" x 30" rebar set unless noted otherwise

Field book: FB18-25



Index No. N13 32-10



○ = corner perpetuated
The Southwest corner of Section 15, T. 32 N., R. 10 E., Langlade County, WI

David E. Tlusty
D.E.T./s/01

I, David E. Tlusty, Registered Land Surveyor, as Langlade County Surveyor, certify that the corner location on this record was determined by me and that this U.S. Public Land Survey Monument Record is correct to the best of my knowledge and belief.