

# LANGLADE COUNTY U.S. PUBLIC LAND CORNER RESTORATION

The East Quarter corner of Section 15, T. 32 N., R. 10 E., Langlade County, WI.

**Corner was: (check all that apply)**

- Restored through acceptance of an obliterated evidence location.
- Restored through acceptance of a found perpetuated location.
- Determined to be lost and re-established through proportionate methods.
- Show bearings and distances to PLSS corners used for proportioning, and show original distances).
- Restored/recovered/re-established in a location that differs from a previously established position.
- (Show difference in plan view below).
- Check here if additional information is shown on the reverse side of this form.

3210152000

**Describe record evidence, recovered physical evidence, occupational evidence, testimonial evidence and all other evidence considered in the recovery/restoration of the corner.**


The original corner was established in 1860 by Hiram Fellows. Original bearing trees: hemlock, 14", N57°E, 7 links and a hemlock, 24", S76°W, 12 links. Original corner was 121' north of creek flowing SW. Brooks, in 1908, found "Orig. BT stump Hemlock, NE badly rotten. Other Pine instead of Hemlock". He used the corner for survey work in Section 14. I found no evidence of the original or Brooks' corner so I re-established the corner by single proportionate measurement between adjoining section corners. The corner falls 90' north of an old creek channel and 130' north of the current channel, and approx. 35' West of a north-south logging road.


**Physical description of the monument set:**

Set a 2" x 30" galvanized, flanged bottom iron pipe monument, up 0.2', with 3 1/4" brass cap stamped to identify the corner. Set a white vinyl sign post 0.5' west of the corner monument.


**Describe the accessories used to perpetuate the corner. Include a plan view drawing and accessories found/set. Describe measuring point on bearing trees. Show any topographic features that would aid in future recovery of the corner.**

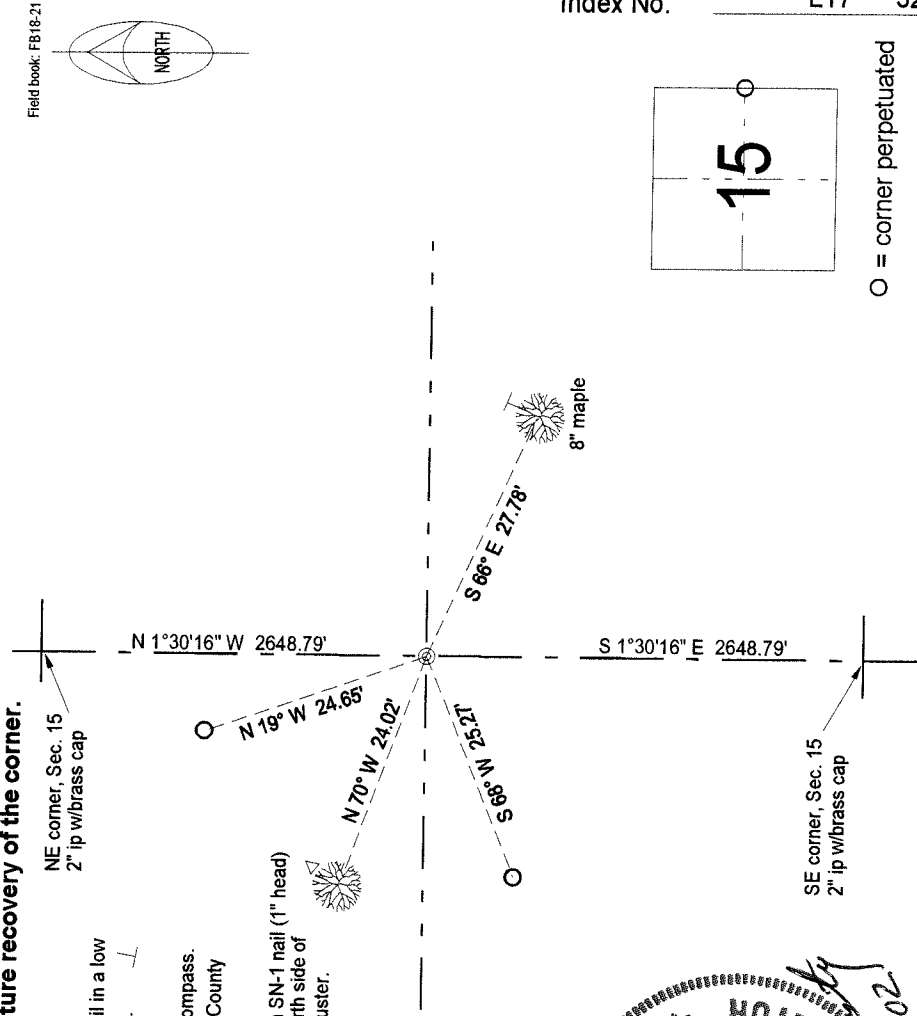
**LEGEND**

Bearing trees are measured to a nail in a low blaze on the side of the tree shown. 

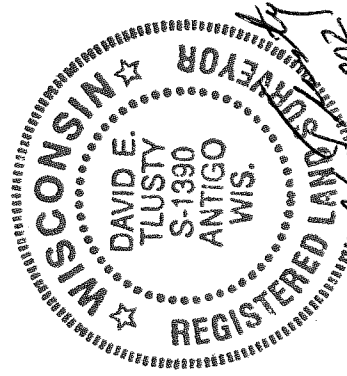
 3/4" x 30" rebar set

Tie bearings magnetic with hand compass.  
Section line bearings are Langlade County  
Coordinate system grid bearings.

 Set Bernitsen SN-1 nail (1" head) upright in north side of 30" maple cluster.

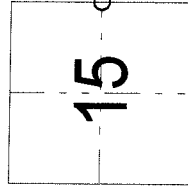


Field book: FB18-21



I, David E. Tlusty, Registered Land Surveyor, as Langlade County Surveyor, certify that the corner location on this record was determined by me and that this U.S. Public Land Survey Monument Record is correct to the best of my knowledge and belief.

Index No.                      L17 32-10



○ = corner perpetuated  
The East Quarter  
corner of Section 15,  
T. 32 N., R. 10 E.,  
Langlade County, WI