

LANGLADE COUNTY U.S. PUBLIC LAND CORNER RESTORATION

The South Quarter corner of Section 15, T. 32 N., R. 10 E., Langlade County, WI.

Corner was: (check all that apply)

3210150020

- Restored through acceptance of an obliterated evidence location.
- Restored through acceptance of a found perpetuated location.
- Determined to be lost and re-established through proportionate methods.
- Show bearings and distances to PLSS corners used for proportioning, and show original distances).
- Restored/recovered/re-established in a location that differs from a previously established position.
- (Show difference in plan view below).
- Check here if addition information is shown on the reverse side of this form.

Describe record evidence, recovered physical evidence, occupational evidence, testimonial evidence and all other evidence considered in the recovery/restoration of the corner.

The original corner was established in 1860 by Hiram C. Fellows. Original bearing trees: birch, 8", N36°E, 5 links, and a birch, 10", S36°W, 26 lks. In 1887, Dorr surveyed the N-S 1/4 line in Section 22 and measured it as 82.5 chains (5445'). In 1901, Webley surveyed west from this corner. He had a distance to the corner to the West of 40.14 chains (2649.24'). 11/11/09 D. Tlusty, D. Williams found no evidence of the corner. Established corner on an extension of a line from the South 1/4 corner of Section 22, north through the recovered center of Section 22 and by doubling the distance from the center of Section 22 to existing fences on each side of the road at the CN1/16. (See map #10527, County Surveyors records). This position fits Dorr's and Webley's distances and hits very well with the centerline of roads west and south.

Physical description of the monument set:

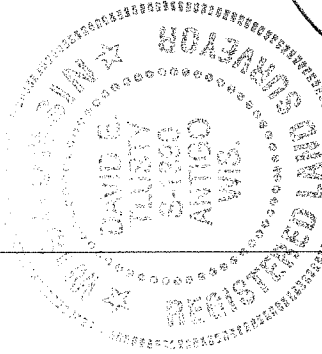
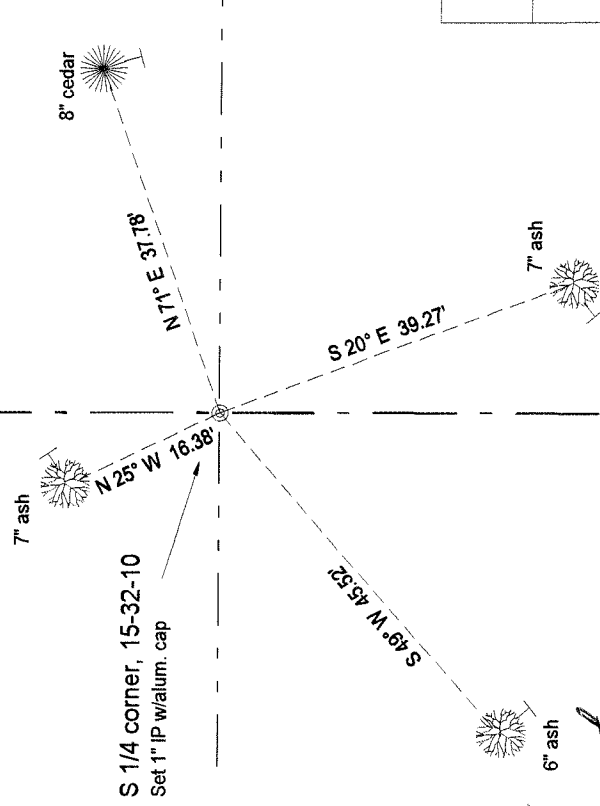
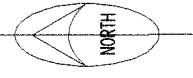
Set a 1" x 60" iron pipe with 2" aluminum cap.
Set a white vinyl sign post, East, 1.0'
Corner is on the east edge of 2 large cottonwoods.

Describe the accessories used to perpetuate the corner. Include a plan view drawing and accessories found/set. Describe measuring point on bearing trees. Show any topographic features that would aid in future recovery of the corner.

LEGEND

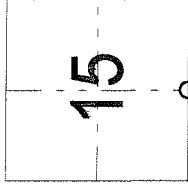
- Bearing trees are measured to a nail in a low blaze on the side of the tree shown.
- BT's painted blue.
- Tie bearings magnetic with hand compass.

Field book: FB18-18



David E. Tlusty
3/5/2001

Index No. N15 32-10



○ = corner perpetuated
The South Quarter corner of Section 15, T. 32 N., R. 10 E., Langlade County, WI

I, David E. Tlusty, Registered Land Surveyor, as Langlade County Surveyor, certify that the corner location on this record was determined by me and that this U.S. Public Land Survey Monument Record is correct to the best of my knowledge and belief.