

LANGLADE COUNTY U.S. PUBLIC LAND CORNER RESTORATION

The Southwest corner of Section 14, T. 32 N., R. 10 E., Langlade County, WI.

Corner was: (check all that apply) 3210150000

- Restored through acceptance of an obliterated evidence location.
- Restored through acceptance of a found perpetuated location.
- Determined to be lost and re-established through proportionate methods.
- Show bearings and distances to PLSS corners used for proportioning, and show original distances).
- Restored/recovered/re-established in a location that differs from a previously established position.
- (Show difference in plan view below).
- Check here if additional information is shown on the reverse side of this form.

Describe record evidence, recovered physical evidence, occupational evidence, testimonial evidence and all other evidence considered in the recovery/restoration of the corner.


The original corner was established in 1860 by Hiram C. Fellows. Original bearing trees: birch, 13", N06°W, 9 links, and a hemlock, 20", S10°E, 5 lks. In 1925±, Hutchinson marked ties for this corner: birch, 12", N 85° W, 27 links and a hemlock, 12", N 30° W, 57 links. In 1999, Bob Bures, longtime area resident told me that the corner was a "pipe with cap in the center of the road, right at the gate". Searched several times with metal detectors for the corner. Found nothing. Based on the testimony of Mr. Bures, I re-established the corner in the center of the road, and in line with a very old fence west of the road. Corner is at cable gate on north-south road. Found stump at N30°W, 38', which could be Hutchinsons.

Physical description of the monument set:

Set a 2" x 30" galvanized, flanged bottom iron pipe monument, 0.7' below road surface at gate.

Describe the accessories used to perpetuate the corner. Include a plan view drawing and accessories found/set. Describe measuring point on bearing trees. Show any topographic features that would aid in future recovery of the corner.

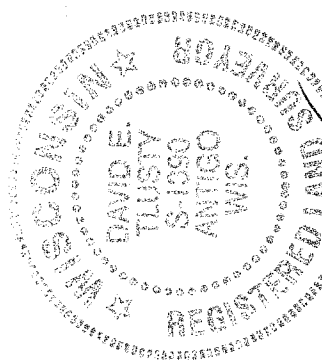
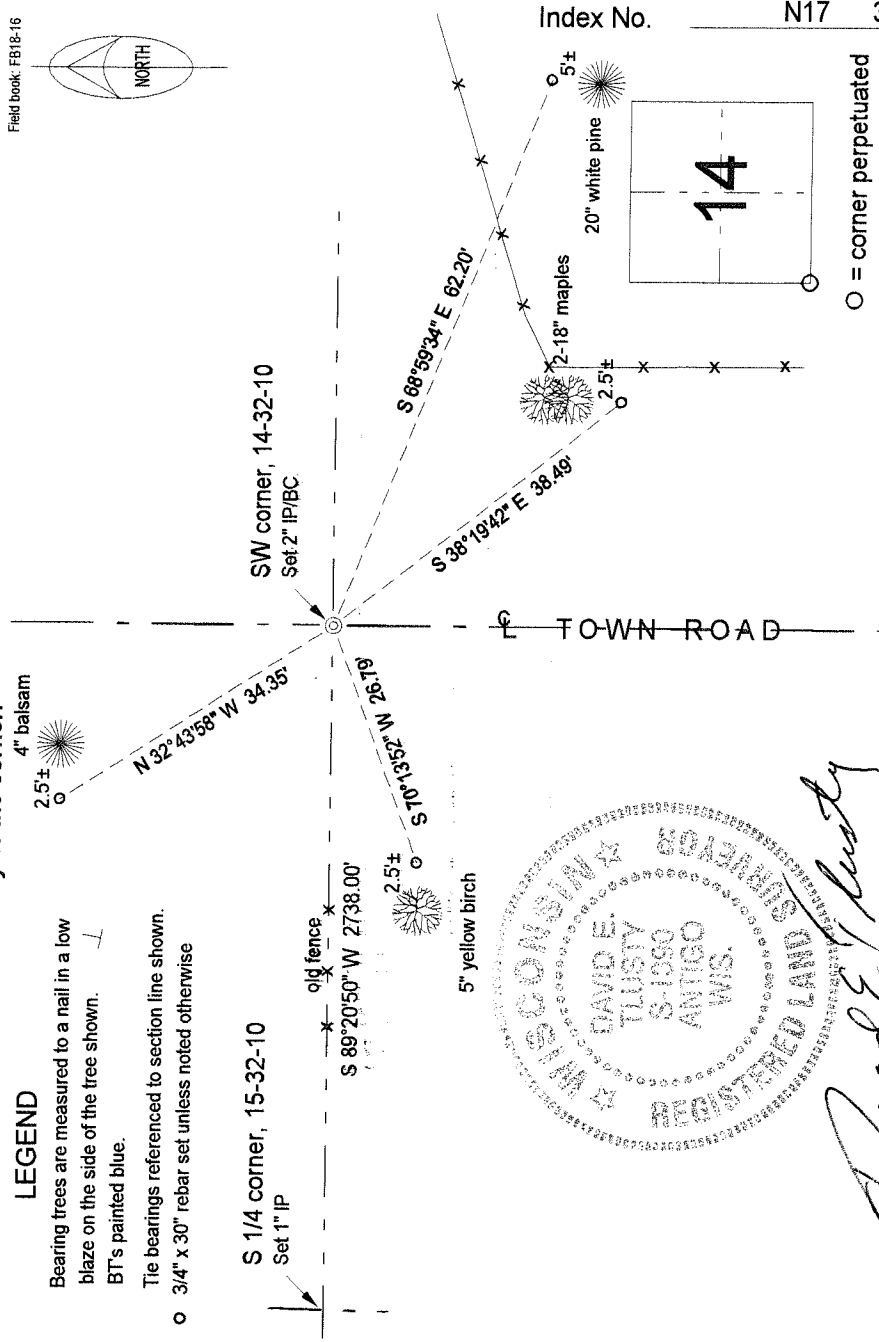
LEGEND

Bearing trees are measured to a nail in a low blaze on the side of the tree shown. 

BT's painted blue.

Tie bearings referenced to section line shown.

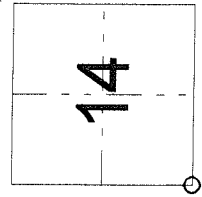
- 3/4" x 30" rebar set unless noted otherwise



David E. Tlusty
12/28/00

I, David E. Tlusty, Registered Land Surveyor, as Langlade County Surveyor, certify that the corner location on this record was determined by me and that this U.S. Public Land Survey Monument Record is correct to the best of my knowledge and belief.

Index No. N17 32-10



○ = corner perpetuated
The Southwest corner of Section 14, T. 32 N., R. 10 E., Langlade County, WI