

LANGLADE COUNTY U.S. PUBLIC LAND CORNER RESTORATION

The East Quarter corner of Section 14, T. 32 N., R. 10 E., Langlade County, WI.

Corner was: (check all that apply)

- Restored through acceptance of an obliterated evidence location.
- Restored through acceptance of a found perpetuated location.
- Determined to be lost and re-established through proportionate methods.
 - Show bearings and distances to PLSS corners used for proportioning, and show original distances).
- Restored/recovered/re-established in a location that differs from a previously established position.
 - (Show difference in plan view below).
- Check here if additional information is shown on the reverse side of this form.

3210142000

Describe record evidence, recovered physical evidence, occupational evidence, testimonial evidence and all other evidence considered in the recovery/restoration of the corner.

The original corner was established in 1860 by Hiram C. Fellows. Original bearing trees: tamarac, 10", N31°E, 40 links, and cedar, 12", S63°W, 6 lks. In 1907, Brooks could find no original evidence, so he re-established this 1/4 at "39.98 on true line and set gass pipe" and measured to a pine stump, 28", N62°E, 25.74' and a pine stump, 24", S85°W, 46.53'. 11/15/01 D. Tlusty, D. Williams located precomputed search area with GPS and found a 1" (OD) x 33" rusty pipe, frost heaved and lying on ground, under several inches of leaves. We could tell which end was previously driven into the ground, so we re-set the found pipe and then measured to two pine stumps: N59°E, 25.7' to face of stump, and N85°W, 46.7' to face. Accepted this pipe as the previously established corner by Brooks and perpetuated said location as shown below.

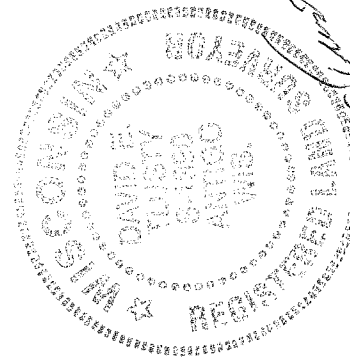
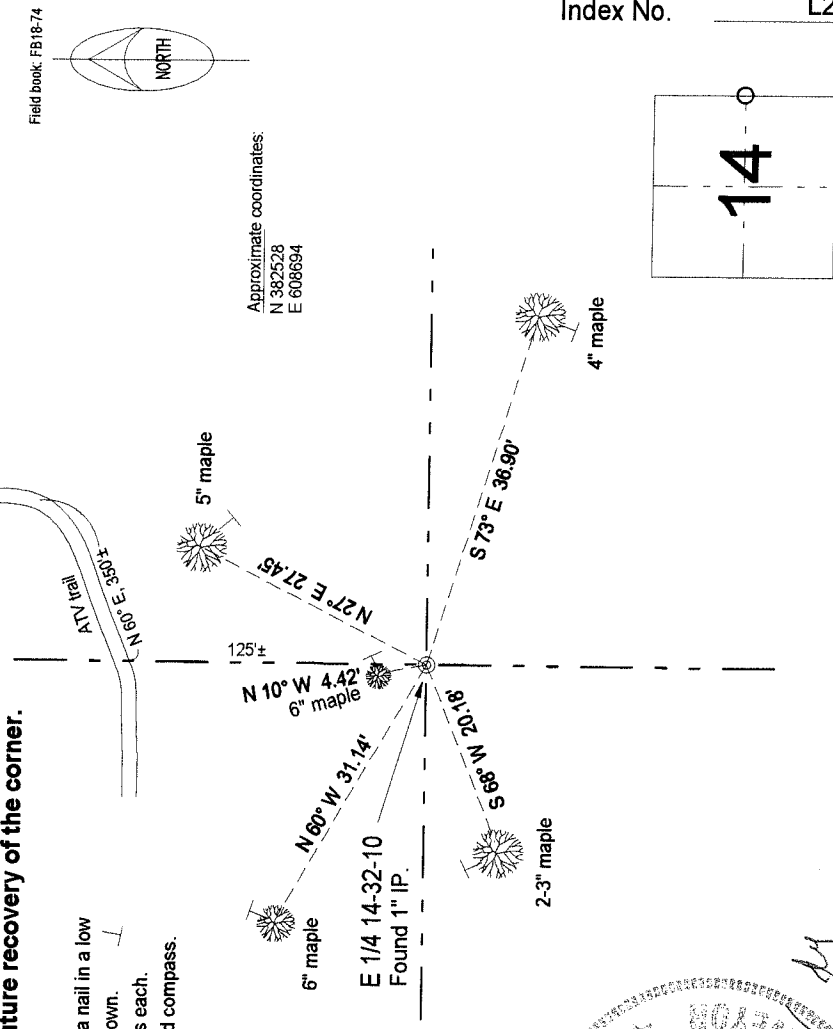
Physical description of the monument set:

Re-set the existing pipe. Set a white vinyl sign post next to corner monument.

Describe the accessories used to perpetuate the corner. Include a plan view drawing and accessories found/set. Describe measuring point on bearing trees. Show any topographic features that would aid in future recovery of the corner.

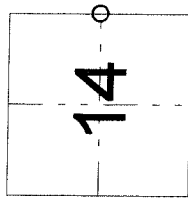
LEGEND

- Bearing trees are measured to a nail in a low blaze on the side of the tree shown.
- BT's painted blue w/ 2 BT signs each.
- The bearings magnetic with hand compass.



I, David E. Tlusty, Registered Land Surveyor, as Langlade County Surveyor, certify that the corner location on this record was determined by me and that this U.S. Public Land Survey Monument Record is correct to the best of my knowledge and belief.

Index No. L21 32-10



○ = corner perpetuated
The East Quarter corner of Section 14, T. 32 N., R. 10 E., Langlade County, WI