

LANGLADE COUNTY U.S. PUBLIC LAND CORNER RESTORATION

The Southeast corner of Section 14, T. 32 N., R. 10 E., Langlade County, WI.

Corner was: (check all that apply)

- Restored through acceptance of an obliterated evidence location.
- Restored through acceptance of a found perpetuated location.
- Determined to be lost and re-established through proportionate methods.
- Show bearings and distances to PLSS corners used for proportioning, and show original distances).
- Restored/recovered/re-established in a location that differs from a previously established position.
- Check here if additional information is shown on the reverse side of this form.

Describe record evidence, recovered physical evidence, occupational evidence, testimonial evidence and all other evidence considered in the recovery/restoration of the corner.

The original corner was established in 1860 by Hiram Fellows. Original bearing trees: cedar, 15", N20°W, 6 links and a cedar, 10", S10°E, 5 links. Brooks, in 1907, described this corner as "orig BT down and badly rotten. Set new cedar stake and Gass pipe. No BT near." Brooks then ran the east line of Section 14, setting "gass" pipes at the E1/4 corner and the NE corner of the section. He also measured from here to the S1/4 corner of Section 14. 04/11/02 D. Tlusty, after extensive searching for Brooks "Gass" pipe and not finding it, I reset this corner on an extension of a line from Brooks' recovered NE corner, through his recovered E1/4 corner, and at double his distance, which worked very good. This location also works with Brooks distance to a N-S fenceline, one-half mile to the west. See dimensions below. Corner falls in a wet, miserable ash swamp.

Physical description of the monument set:

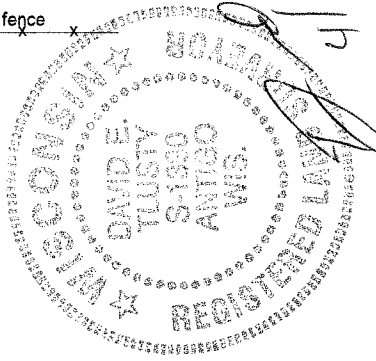
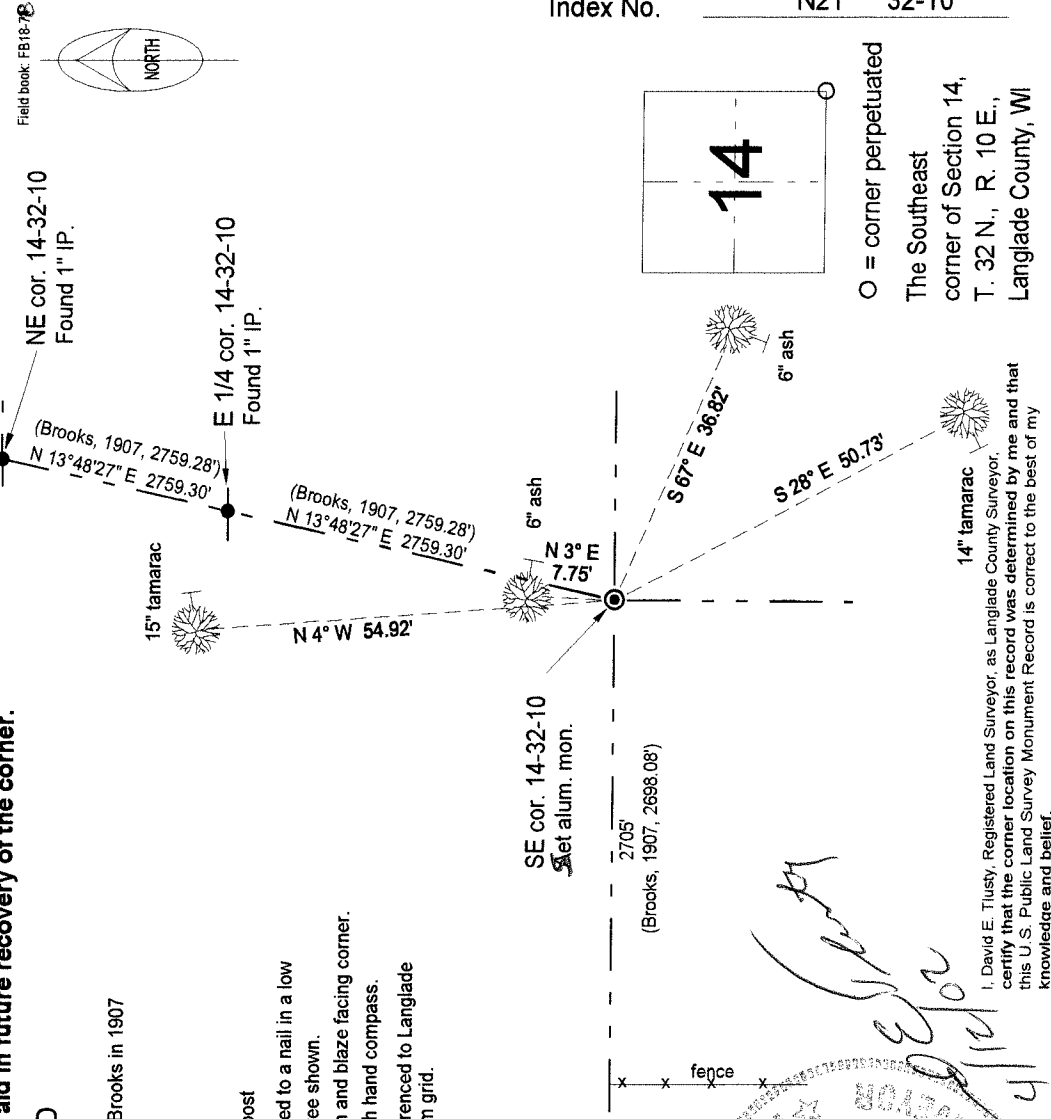
I set a 1" dia. x 5' long, barbed-pointed, aluminum monument with 2" aluminum cap for the corner. Top of the monument is 2" above the water level. Set a 6" white vinyl sign post next to the monument. The top of the white vinyl sign post next is 2' above the water level.

Describe the accessories used to perpetuate the corner. Include a plan view drawing and accessories found/set. Describe measuring point on bearing trees. Show any topographic features that would aid in future recovery of the corner.

LEGEND

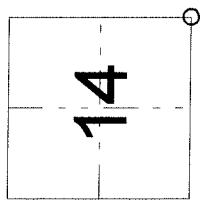
- 1" iron pipe found
- found 1" pipe set by Brooks in 1907
- ⊙ 1" x' alum. mon. set
- ▽ nail/spike as noted
- utility pole
- + Set white vinyl sign post

Bearing trees are measured to a nail in a low blaze on the side of the tree shown.
BT's painted blue BT sign and blaze facing corner.
Tie bearings magnetic with hand compass.
Section line bearings referenced to Langlade County Coordinate System grid.



I, David E. Tlusty, Registered Land Surveyor, as Langlade County Surveyor, certify that the corner location on this record was determined by me and that this U.S. Public Land Survey Monument Record is correct to the best of my knowledge and belief.

Index No. N21 32-10



○ = corner perpetuated
The Southeast corner of Section 14, T. 32 N., R. 10 E., Langlade County, WI