

43210132000

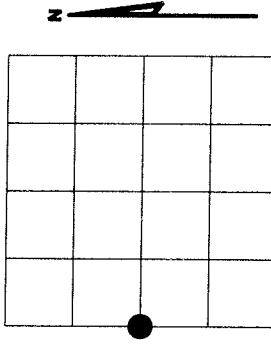
U.S. PUBLIC LAND SURVEY MONUMENT RECORD

NOTE: This form is intended and designed to fulfill all requirements of Wisconsin Administrative Code, Chapter A-E 7.08 U.S. Public Land Survey Monument Record (3)(a)(b)(c)(d)(e)(f)(g)(h)(i). An additional sheet may be added if necessary to conform with said requirements.

(a) Corner location: Township 32 North

Range 11 East

Town of NEVA, LANGLADE County, Wisconsin



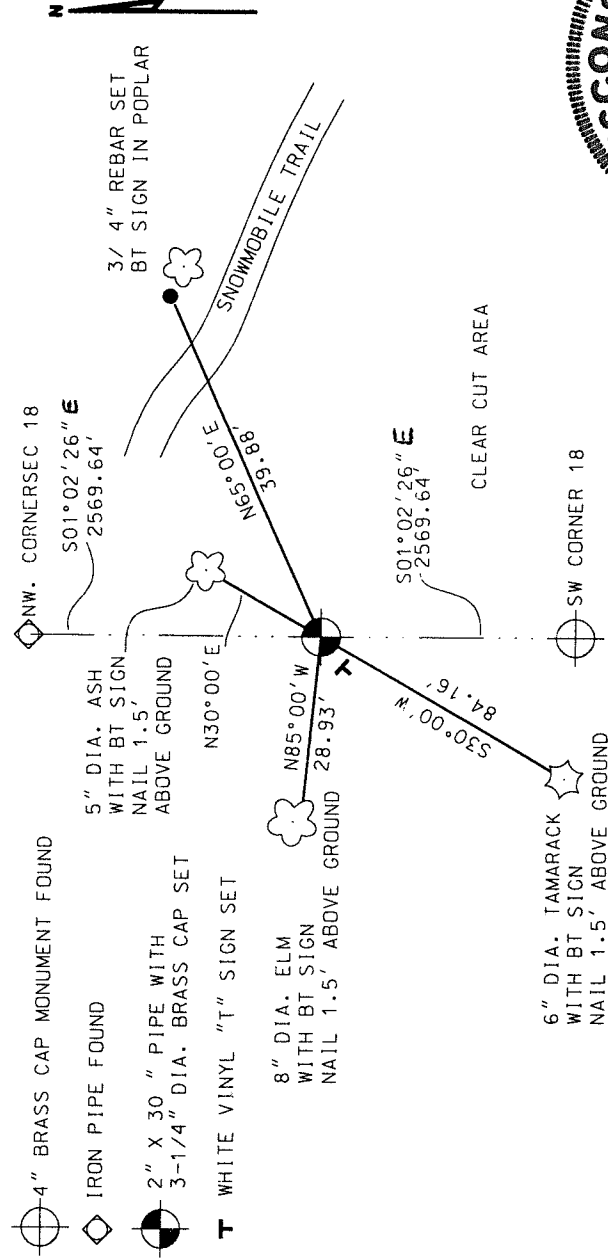
Section 18

THIS CORNER WAS DETERMINED TO BE LOST AND RE-ESTABLISHED THROUGH PROPORTIONATE METHODS.

(b)(f)(g)(h) Description of monument found at this corner and if it was accepted, state all evidence (material, testimonial, occupational, plats, records, other monuments) used as a basis for accepting. If not accepted or if nothing was found, state evidence used as basis for establishing location. If reestablished through lost corner proportionate methods, indicate all monuments, distances and directions used to establish. Indicate type of monument found or set and sign post.

The original corner was established in 1860 by H.C. Fellows. Henry Olk, surveyor, referenced to the West line of Section 18 in 1944, and after interpreting his notes it was determined that Olk reference this corner to be equal distance between Northwest and Southwest corners of Section 18. Could find no other reference to this corner. At site could find no evidence of this corner. Took measurements to existing evidence. I established this corner on a straight line and at equal distance between the Northwest and Southwest corners of Section 18.

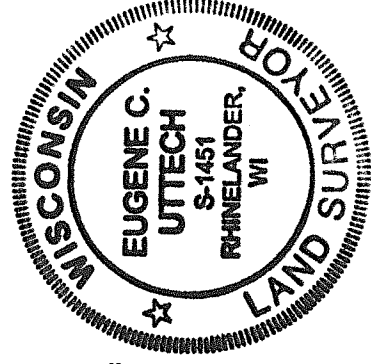
(c)(d)(e) Plan view of corner with ties to at least 4 witness monuments. If in disagreement with previously established corner, show the distances between the two corners and also indicate the ties to the



(i) I, Eugene C. Uttech, Registered Land Surveyor *S-1451 hereby certify that the corner location on this record was determined by me or under my direction and control and that this U.S. Public Land Survey Monument Record is correct and complete to the best of my knowledge and belief.

Eugene C. Uttech
Signature

9/5/02
Date



Index No. LI

32-11