

# LANGLADE COUNTY U.S. PUBLIC LAND CORNER RESTORATION

The South Quarter corner of Section 13, T. 32 N., R. 10 E., Langlade County, WI.

**Corner was: (check all that apply)**

43210130020

- Restored through acceptance of an obliterated evidence location.
- Restored through acceptance of a found perpetuated location.
- Determined to be lost and re-established through proportionate methods.
- Show bearings and distances to PLSS corners used for proportioning, and show original distances).
- Restored/recovered/re-established in a location that differs from a previously established position.
- (Show difference in plan view below).
- Check here if additional information is shown on the reverse side of this form.

**Describe record evidence, recovered physical evidence, occupational evidence, testimonial evidence and all other evidence considered in the recovery/restoration of the corner.**

The original corner was established by Hiram Fellows. Original bearing trees: tamarac, 10", N55°W, 8 links and a tamarac, 8", S36°E, 23 links. There are no available resurvey records for this corner or for the interior of adjoining sections 13 & 24. I re-established this corner at the intersection of a straight line between the SE and SW corners of Section 13, and an extension of a line of existing occupation (road centerline and partial fence) on the South part of the N-S 1/4 line of Section 24. A search was made at the computed midpoint location between section corners, but nothing was found. Other places in townships surveyed by Hiram Fellows have "long" and "short" distances as on this line. I theorized that Fellows "stubbed" in this corner from the West, then later someone found it and surveyed the N-S 1/4 line in Section 24 for road purposes, and a road was built on a part of it.

**Physical description of the monument set:**

I set a new 1" x 60" aluminum pipe monument with a barbed bottom and a 2 1/2" aluminum cap.  
I set 2 white vinyl sign posts, one 0.8' north of monument and the other 1.0' west of monument.

**Describe the accessories used to perpetuate the corner. Include a plan view drawing and accessories found/set. Describe measuring point on bearing trees. Show any topographic features that would aid in future recovery of the corner.**

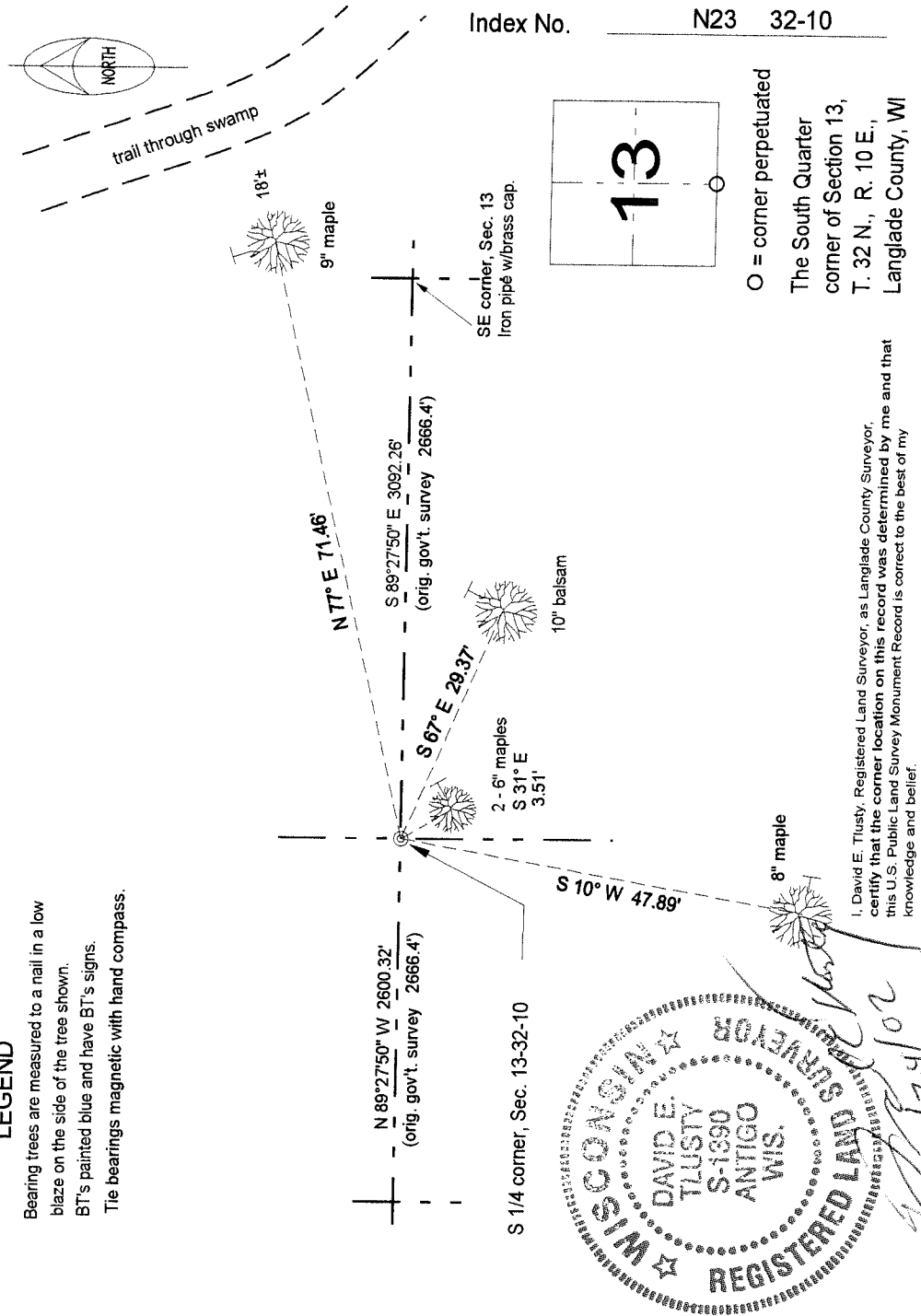
**LEGEND**

Bearing trees are measured to a nail in a low blaze on the side of the tree shown.

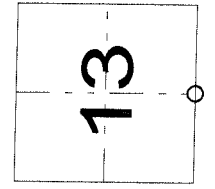
BT's painted blue and have BT's signs.

Tie bearings magnetic with hand compass.

Field book: FB18-93



Index No.           N23 32-10          



O = corner perpetuated  
The South Quarter  
corner of Section 13,  
T. 32 N., R. 10 E.,  
Langlade County, WI

I, David E. Tlusty, Registered Land Surveyor, as Langlade County Surveyor,  
 certify that the corner location on this record was determined by me and that  
 this U.S. Public Land Survey Monument Record is correct to the best of my  
 knowledge and belief.

*David E. Tlusty*  
 10/22/2012