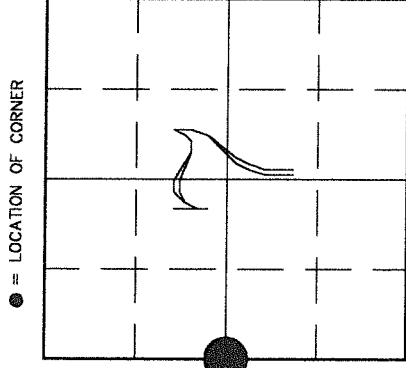


# U.S. PUBLIC LAND SURVEY MONUMENT RECORD

**HISTORY OF ORIGINAL CORNER ESTABLISHMENT AND SUBSEQUENT RESTORATION AND DESCRIPTION OF ANY RECORD, MONUMENT OCCUPATIONAL, TESTIMONIAL OR OTHER EVIDENCE CONSIDERED:**

The original corner was established in 1860 by Hiram C. Fellows. Original bearing trees: Hemlock 16" S57E 12 lks., Spruce 12" N67W 25lks. In 1879, Deleglise, performing a road survey, "Found the original U.S. 1/4 post, pulled it out and set a new Hemlock post in the same hole." In 1974, Kelly "Found sqd stake at jcn 4 fences, mkd 1/4 s very old-rotted" He set a 2" pipe w/brass cap. On 8/13/99, Becky and Gerry Bahar found the brass capped pipe at the fence intersection and tied out.



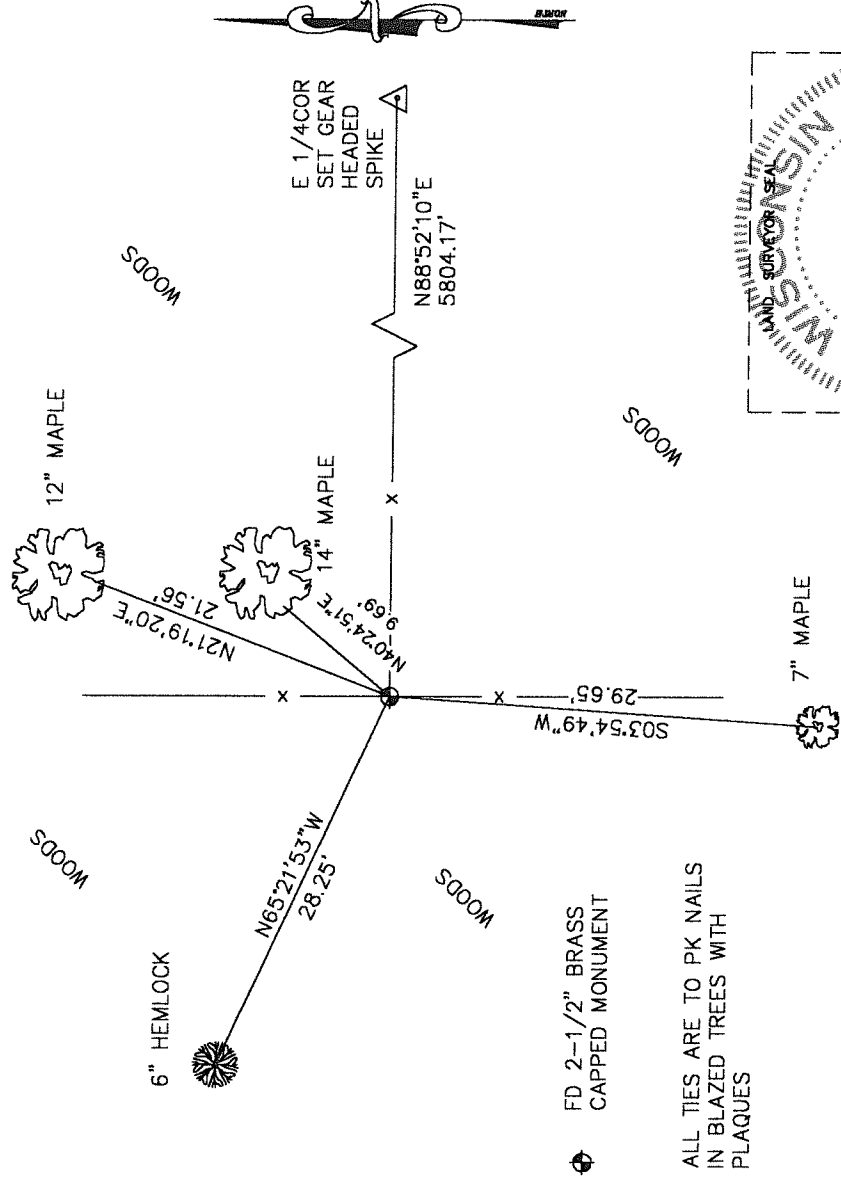
● = LOCATION OF CORNER

SECTION 7  
 TOWNSHIP 32 NORTH, RANGE 11 EAST  
 TOWN OF NEVA  
 LANGLADE \_\_\_\_\_ COUNTY, WISCONSIN

**CORNER WAS: (CHECK ALL THAT APPLY)**

- RESTORED THROUGH ACCEPTANCE OF AN OBLITERATED EVIDENCE LOCATION
- RESTORED THROUGH ACCEPTANCE OF A FOUND PERPETUATED LOCATION
- CONSIDERED A LOST CORNER AND REESTABLISHED THROUGH LOST CORNER PROPORTIONATE METHODS (INCLUDE A PLAN VIEW DRAWING SHOWING DISTANCES AND DIRECTIONS TO OTHER PUBLIC LAND SURVEY CORNERS USED FOR PROPORTIONING AND DETERMINING THE CORNER LOCATION)
- RESTORED OR REESTABLISHED IN A LOCATION THAT DIFFERS FROM A PREVIOUS RESTORATION OR REESTABLISHMENT (INCLUDE A PLAN VIEW DRAWING AND INDICATE WHAT WAS SET AND/OR FOUND)
- CHECK IF THERE IS ADDITIONAL INFORMATION ON BACK

**DESCRIBE THE MONUMENT AND ACCESSORIES USED TO PERPETUATE THE LOCATION OF THE CORNER. (INCLUDE A PLAN VIEW DRAWING AND INDICATE WHAT WAS SET AND/OR FOUND) ALSO INCLUDE FOUR TIES TO THE SECTION CORNER AND DESCRIPTION OF THE TIES.**



● FD 2-1/2" BRASS CAPPED MONUMENT

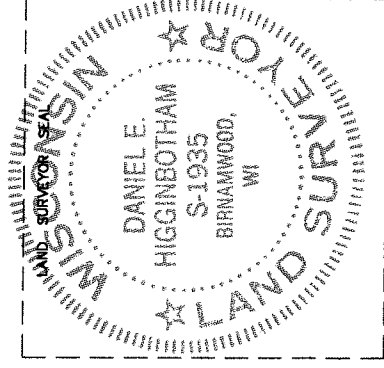
ALL TIES ARE TO PK NAILS IN BLAZED TREES WITH PLAQUES

**DANIEL E. HIGGINBOTHAM**

(NAME OF SURVEYOR) CERTIFY THAT THE CORNER LOCATION SHOWN ON THIS RECORD WAS DETERMINED BY ME OR UNDER MY DIRECTION AND CONTROL AND THAT THIS U.S. PUBLIC LAND SURVEY MONUMENT RECORD IS CORRECT AND COMPLETE TO THE BEST OF MY KNOWLEDGE AND BELIEF.

*Daniel E. Higginbotham*  
 SIGNATURE

3/17/00  
 DATE



INDEX NO. G25 32-10

3210122000