

LANGLADE COUNTY U.S. PUBLIC LAND CORNER RESTORATION

The East Quarter corner of Section 11, T. 32 N., R. 10 E., Langlade County, WI.

Corner was: (check all that apply)

- Restored through acceptance of an obliterated evidence location.
- Restored through acceptance of a found perpetuated location.
- Determined to be lost and re-established through proportionate methods.
- Show bearings and distances to PLSS corners used for proportioning, and show original distances).
- Restored/recovered/re-established in a location that differs from a previously established position.
- (Show difference in plan view below).
- Check here if addition information is shown on the reverse side of this form.

3210112000

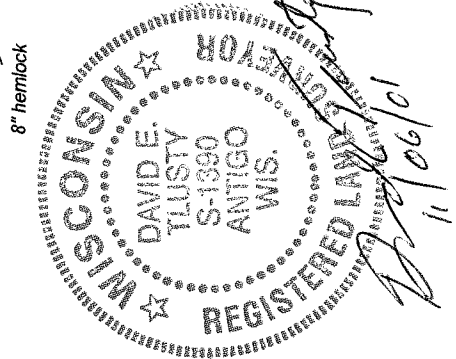
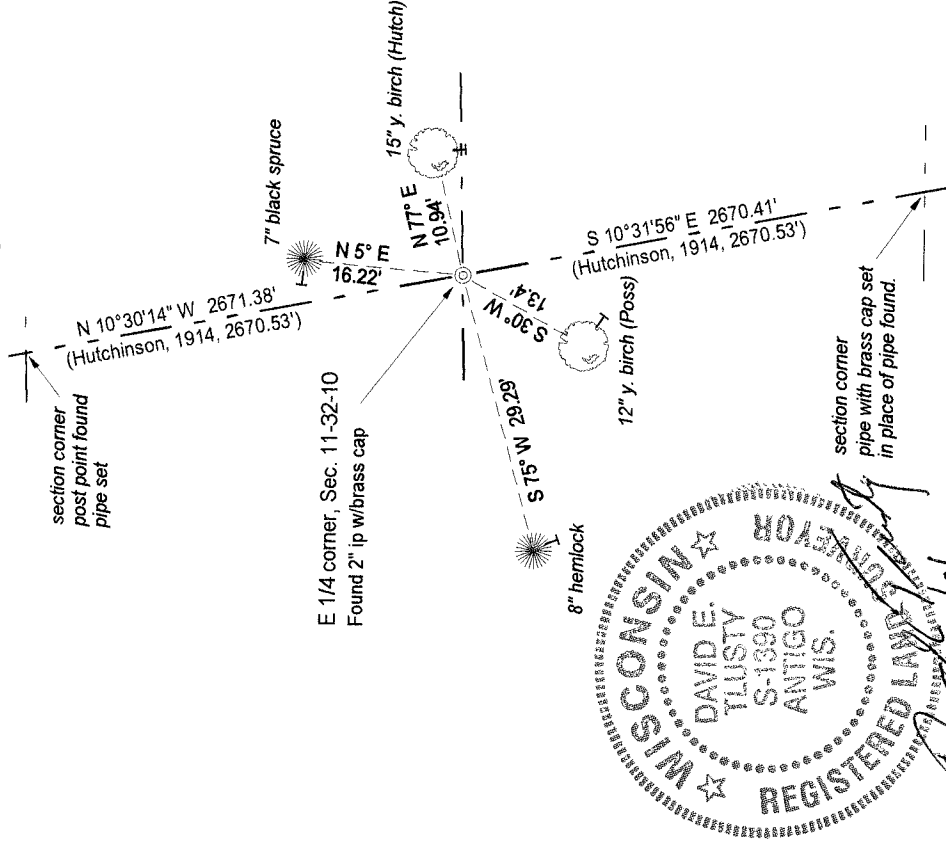
Describe record evidence, recovered physical evidence, occupational evidence, testimonial evidence and all other evidence considered in the recovery/restoration of the corner.

The original corner was established in 1860 by Hiram C. Fellows. Original bearing trees: cedar, 8", N74°W, 10 links and a cedar, 10", S80°W, 12 links. In 1914, Hutchinson couldn't find original evidence so set this corner on line between the adjoining section corners. Hutch's BT's: hemlock, 12, S19.5°E, 13.53' and a birch, 12", N74°E, 10.07'. In 1974, Poss found a 12" x 12" sq.d. stake and blaze. He marked 3 new BT's: balsam, 6", N88°E, 14.5'; spruce, 8", N54°W, 16.0' and a Y. birch, 8", S25°45'W, 12.9'. He set a 2" iron pipe with brass cap for the corner. 10/11/01 D. Tlusty, D. Williams found 2" iron pipe with brass cap. Found Poss's birch BT good, other two grown shut (balsam NE is standing dead). Also found Hutchinson birch NE good. Distances and alignment with corners to the north and south work very good with Hutchinsons dimensions. Accepted pipe found as the best evidence of Hutchinsons reestablished corner.

Physical description of the monument set:

Did not replace existing pipe. Set a white vinyl sign post, 1' north of the corner monument.

Describe the accessories used to perpetuate the corner. Include a plan view drawing and accessories found/set. Describe measuring point on bearing trees. Show any topographic features that would aid in future recovery of the corner.



I, David E. Tlusty, Registered Land Surveyor, as Langlade County Surveyor, certify that the corner location on this record was determined by me and that this U.S. Public Land Survey Monument Record is correct to the best of my knowledge and belief.

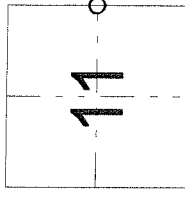
Field book 18-53



LEGEND

- Bearing tree distances are to an aluminum nail driven in the center of a low blaze on the side of the tree shown as "T".
- Trees are painted blue and have Bearing Tree signs facing the corner.
- Tie bearings referenced magnetic bearing with compass near corner.
- Section line bearings referenced to Langlade County Coordinate System grid.

Index No. G21 32-10



○ = corner perpetuated
The East Quarter corner of Section 11, T. 32 N., R. 10 E., Langlade County, WI