

LANGLADE COUNTY U.S. PUBLIC LAND CORNER RESTORATION

The South Quarter corner of Section 11, T. 32 N., R. 10 E., Langlade County, WI.

Corner was: (check all that apply)

- Restored through acceptance of an obliterated evidence location.
- Restored through acceptance of a found perpetuated location.
- Determined to be lost and re-established through proportionate methods.
- Show bearings and distances to PLSS corners used for proportioning, and show original distances).
- Restored/recovered/re-established in a location that differs from a previously established position.
- (Show difference in plan view below).
- Check here if additional information is shown on the reverse side of this form.

3210110020

Describe record evidence, recovered physical evidence, occupational evidence, testimonial evidence and all other evidence considered in the recovery/restoration of the corner.

The original corner was established in 1860 by Hiram C. Fellows. Original bearing trees: lind, 12", N15°W, 25 links; and a lind, 10", S36°W, 14 links. In 1907, E. S. Brooks, described the corner: "Orig. BT standing but rotten. New Birch 16", S20.5°E, 27 links". He set "gass" pipes for this corner, the 1/16th corner to the East and the section corner to the East. 10/12/01 D. Tlusty re-set this corner after recovering Brooks' pipes at the 1/16th corner and section corner to the East. This corner now falls in a field and all previous evidence has been destroyed. See section line distances below.

Physical description of the monument set:

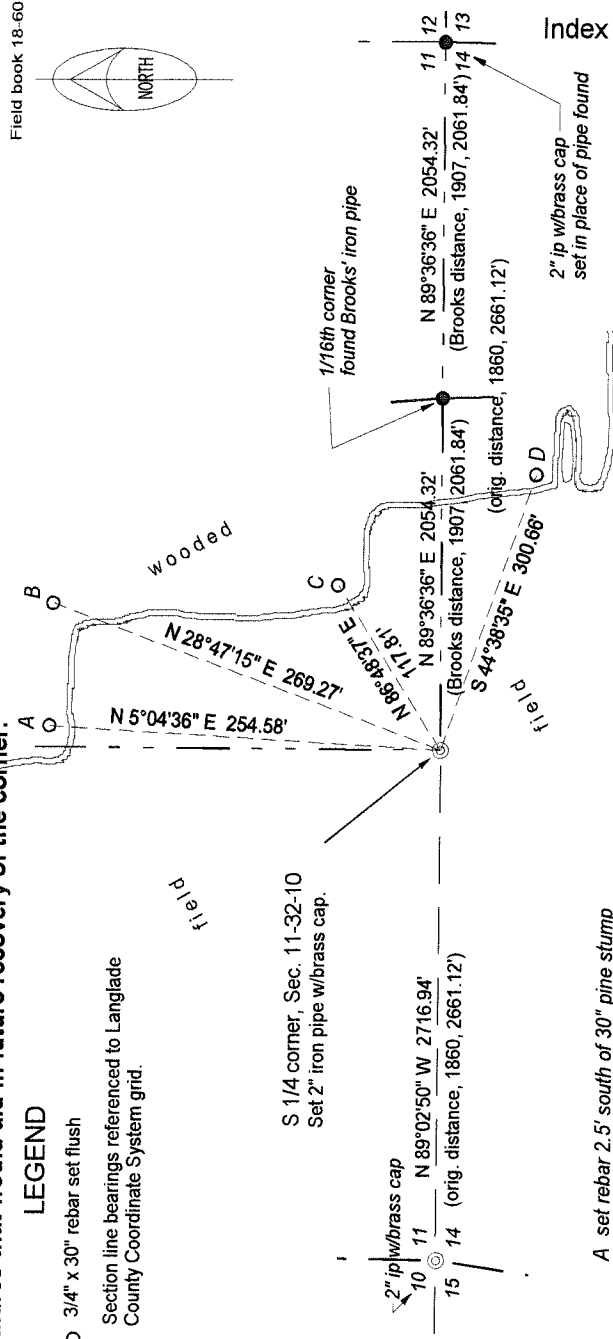
For the corner, I set a new 2" x 30" flared bottom, galvanized iron pipe with brass cap, top of which is 0.4' above ground in small mound of stones.
Set white vinyl sign post, 0.5' north.

Describe the accessories used to perpetuate the corner. Include a plan view drawing and accessories found/set. Describe measuring point on bearing trees. Show any topographic features that would aid in future recovery of the corner.

LEGEND

- 3/4" x 30" rebar set flush

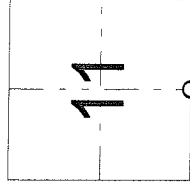
Section line bearings referenced to Langlade County Coordinate System grid.



Field book 18-60

Index No.

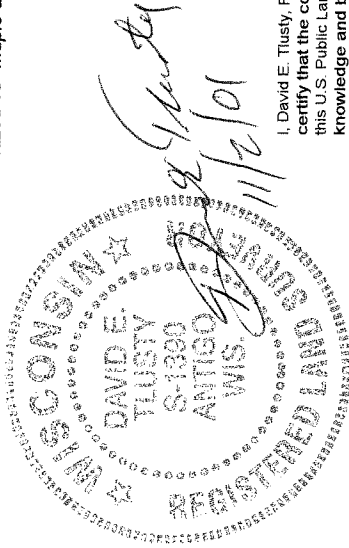
J19 32-10



○ = corner perpetuated

The South Quarter corner of Section 11, T. 32 N., R. 10 E., Langlade County, WI

- A set rebar 2.5' south of 30" pine stump
- B set rebar 1' south of lone 7" balsam, 50' from field
- C set rebar 2.5' north of 16" elm at corner of field
- D set rebar 2.5' north of blazed 10" maple at corner of woods



I, David E. Tlusty, Registered Land Surveyor, as Langlade County Surveyor, certify that the corner location on this record was determined by me and that this U.S. Public Land Survey Monument Record is correct to the best of my knowledge and belief.