

4321010 2000

U.S. PUBLIC LAND SURVEY MONUMENT RECORD

(Prepared and as required by S. A-E 7.08 WI Administrative Code)

The West 1/4 corner of Section 11, T. 32 N., R. 10 E., Langlade County, WI
Corner was (check all that apply)

- Restored through acceptance of an obliterated evidence location.
- Restored through acceptance of a found perpetuated location.
- Determined to be lost and re-established through proportionate methods. (show bearings and distances to PLSS corners used for proportioning.)
- Restored/recovered/re-established in a location that differs from a previously established position. (Show difference in plan view below.)
- Check here if additional information is shown on the reverse side of this form.

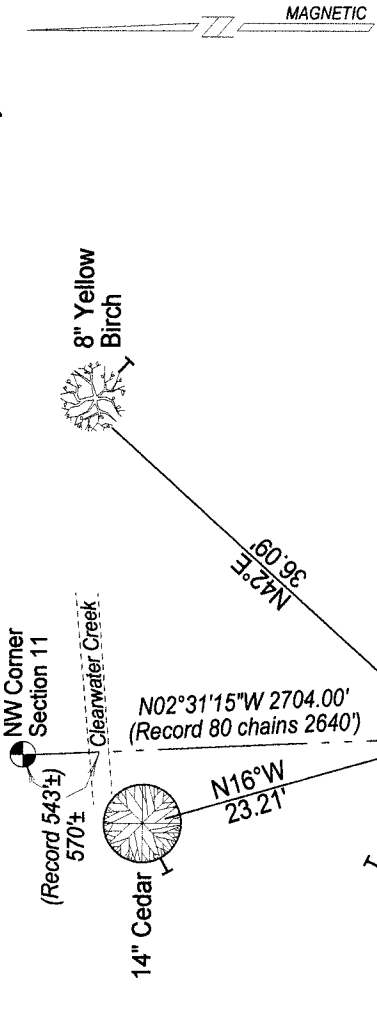
Describe record evidence, recovered physical evidence, occupational evidence, testimonial evidence, and all other evidence considered in the recovery/restoration of the corner.

See Page 2

Physical description of the monument set:

We set a 1.315" o.d. X 48" long iron pipe with a 1.75" o.d. aluminum cap and tied it out as follows.

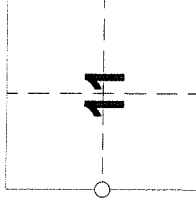
Describe the accessories used to perpetuate the location of the corner. Include a plan view drawing and indicate accessories found/set. Describe measuring point on bearing trees. Show any topographic features that would aid in future recovery of the corner.



Notes:

- Not drawn to any scale.
- Distances measured with a cloth tape to an aluminum nail in a low side blaze in bearing tree.
- Bearing trees blazed chest high, and marked with Langlade County placards.
- Bearings magnetic with hand compass.
- Section line bearing referenced to Langlade County Coordinate System Grid.

The West 1/4
Corner of Section 11
T. 32 N., R. 10 E.
Langlade County, WI



○ = Location of corner

INDEX No. **G 17** 32-10

I, Timothy J. Rusch, certify that the corner location shown on this record was determined by me or under my direction and control and that this U.S. Public Land Survey Monument Record is correct and complete to the best of my knowledge and belief.

T. Rusch 03-10-2011
S-2671 Date

I, David T. Tilusty, certify that the corner location shown on this record was determined by me or under my direction and control and that this U.S. Public Land Survey Monument Record is correct and complete to the best of my knowledge and belief.

D. Tilusty 4/20/2011
S-1390 Date

September, 1860 --

Government Surveyor H.C. Fellows set this corner as part of the original GLO Survey.

His survey notes indicate he set the corner 40.00 chains north of the Section Corner to the south, marking two Bearing Trees: 9" Cedar N85°E, 14 links; 7" Fir S30°W, 5 links. His notes indicate he continued north, calling for a stream crossing at 71.77 chains, and setting the section corner to the north at 80.00 chains.

January, 2011--

The re-establishment of this corner was a joint effort of Surveyor Dave Tlusty and Surveyor Tim Rusch.

Surveyor Rusch needed to locate this ¼ corner in order to perform section subdivision work in Sections 10 and 11. In addition to the other corners of 10 and 11, which had been previously perpetuated, Rusch surveyed the location of the creek called for in the original notes. Rusch collaborated with County Surveyor Tlusty to determine the location of the ¼ corner.

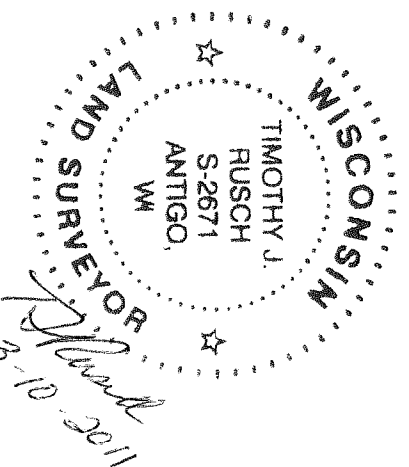
After considering some of the past work of the original government surveyor Fellows, and considering the location of his creek call on this line, it appears that he did not run the entire line but most likely stubbed the corner in from the north.

We feel confident that he ran the entire North line of Section 11, based on excellent records, recovered physical evidence at both ends of that line, and the measured distance on that line being very close to original distance. In contrast, the west line of Section 11, from the SW corner to NW corner, is approximately 260 feet longer than the original distance, runs almost 6 degrees off cardinal and, if ran, would actually have hit the creek 675 feet south of the section corner (instead of 543 feet original) and would also have hit the creek again at 1400 feet south of the section corner (note that there was no original creek call at this distance).

All factors considered, we believe that Fellows never ran this line. Therefore, it was felt that the best evidence to use for placing the corner would be to retrace Fellows work as he would have stubbing in the corner from the north. For distance, we used a length of 2704', which is the average measured length of north-south lines we feel Fellows actually ran, from the section corner to the north. For bearing, we used a mean bearing of several good north-south section lines in the area which we believe were actually run. This line crosses the creek at about 570 feet south of the section corner, which compares well to the 543 feet original distance call.

For the corner, we placed the monument described on Page 1 and measured to bearing trees as shown.

Surveyor Stamp



Page 2

Surveyor Stamp

