

LANGLADE COUNTY U.S. PUBLIC LAND CORNER RESTORATION

The Southeast corner of Section 10, T. 32 N., R. 10 E., Langlade County, WI.

Corner was: (check all that apply)

- Restored through acceptance of an obliterated evidence location.
- Restored through acceptance of a found perpetuated location.
- Determined to be lost and re-established through proportionate methods.
- Show bearings and distances to PLSS corners used for proportioning, and show original distances).
- Restored/recovered/re-established in a location that differs from a previously established position.
- (Show difference in plan view below).
- Check here if addition information is shown on the reverse side of this form.

3210100000

Describe record evidence, recovered physical evidence, occupational evidence, testimonial evidence and all other evidence considered in the recovery/restoration of the corner.

The original corner was established in 1860 by Hiram C. Fellows. Original bearing trees: birch, 12", N28°W, 28 links, and hemlock, 12", S34°E, 27 lks. In 1974, former surveyor Wm. F. Kelly found "5 angle irons welded together with point on end. Rotten wood in hole where angle irons were set. Also at junction of blazed cutting lines. Kelly's corner was witnessed by 2 area residents, R. Kohn and C.A. McEacheren.

Kelly set a 2" iron pipe with brass cap next to the angle iron. 12/09/99 Dave Tlusty, Dean Williams found 2" iron pipe with steel cap leaning west. Re-dug monument straight and added new ties shown below.

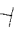
Physical description of the monument set:

Re-set existing 2" iron pipe with cap.

Corner is on the west edge of woods road running north-south.


Describe the accessories used to perpetuate the corner. Include a plan view drawing and accessories found/set. Describe measuring point on bearing trees. Show any topographic features that would aid in future recovery of the corner.

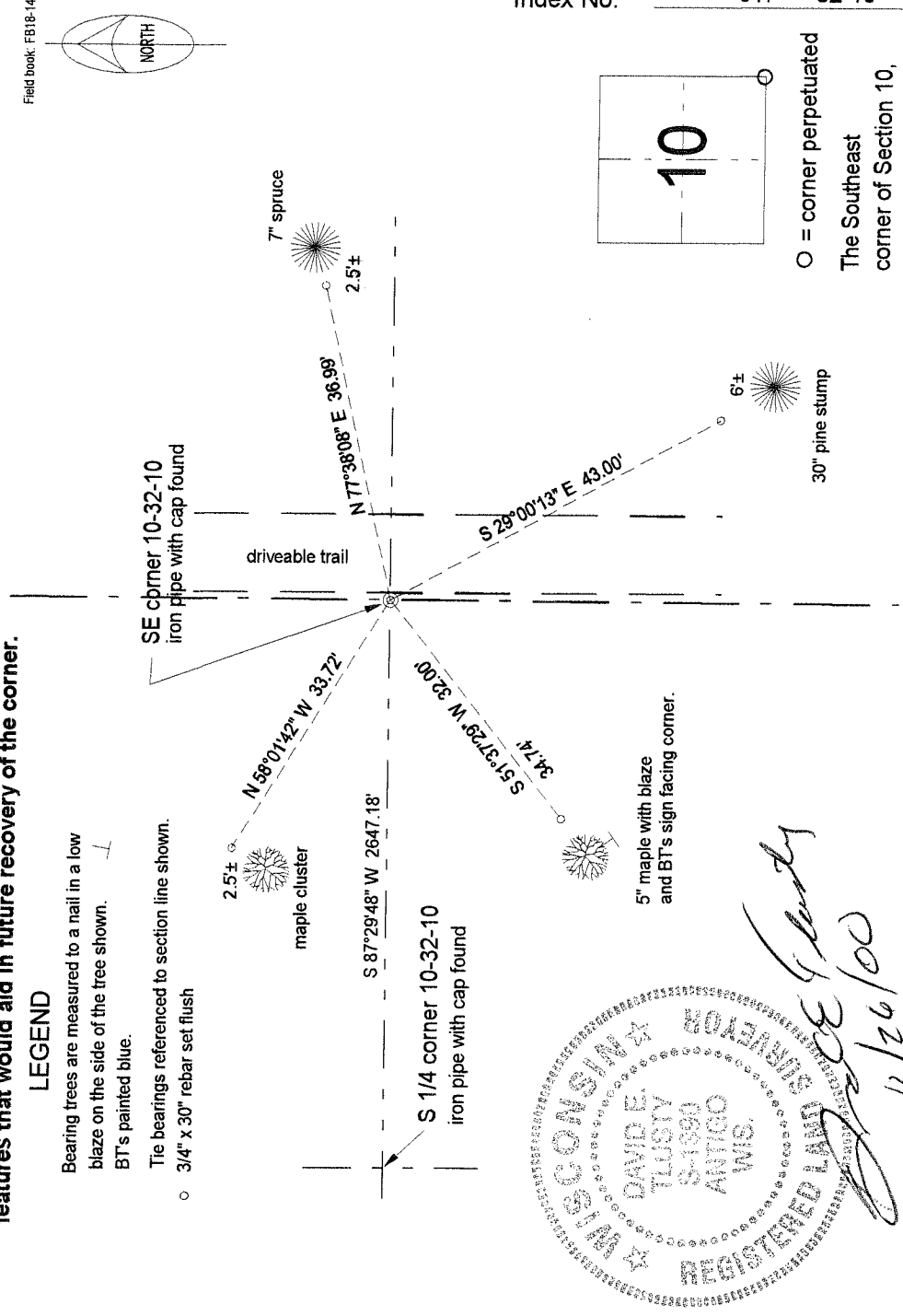
LEGEND

Bearing trees are measured to a nail in a low blaze on the side of the tree shown. 


BT's painted blue.

Tie bearings referenced to section line shown.

 3/4" x 30" rebar set flush



Index No. J17 32-10

 = corner perpetuated

The Southeast corner of Section 10, T. 32 N., R. 10 E., Langlade County, WI



I, David E. Tlusty, Registered Land Surveyor, as Langlade County Surveyor, certify that the corner location on this record was determined by me and that this U.S. Public Land Survey Monument Record is correct to the best of my knowledge and belief.