

LANGLADE COUNTY U.S. PUBLIC LAND CORNER RESTORATION

The East Quarter corner of Section 9, T. 32 N., R. 10 E., Langlade County, WI.

Corner was: (check all that apply)

- Restored through acceptance of an obliterated evidence location.
- Restored through acceptance of a found perpetuated location.
- Determined to be lost and re-established through proportionate methods.
- Show bearings and distances to PLS corners used for proportioning, and show original distances).
- Restored/recovered/re-established in a location that differs from a previously established position.
- (Show difference in plan view below).
- Check here if additional information is shown on the reverse side of this form.

3210092000

Describe record evidence, recovered physical evidence, occupational evidence, testimonial evidence and all other evidence considered in the recovery/restoration of the corner.

The original corner was established in 1860 by Hiram C. Fellows. Original bearing trees: birch, 12", N89°E, 4 links, and birch, 11", S89°W, 24 lks. In 1913, Hutchinson found "both BT's, dead, but marks plain. Marked a new pine stump, 20", N 49°30' W, 50 links. 1999, Tom Arnott, Dean Williams set corner at bearing & distance from old pine stump so that Hutchinsons old distance to the corner to the north worked. Set 3/4" rebar for corner. 12/09/99 D. Tlusty, Dean Williams replaced rebar with 2" x 30" iron pipe with brass cap, top up 0.3'.

Physical description of the monument set:

Set a 2" x 30" galvanized, flanged bottom iron pipe monument, up 0.3', with 3 1/4" brass cap stamped to identify the corner. Set a white vinyl sign post 1' north of the corner monument.

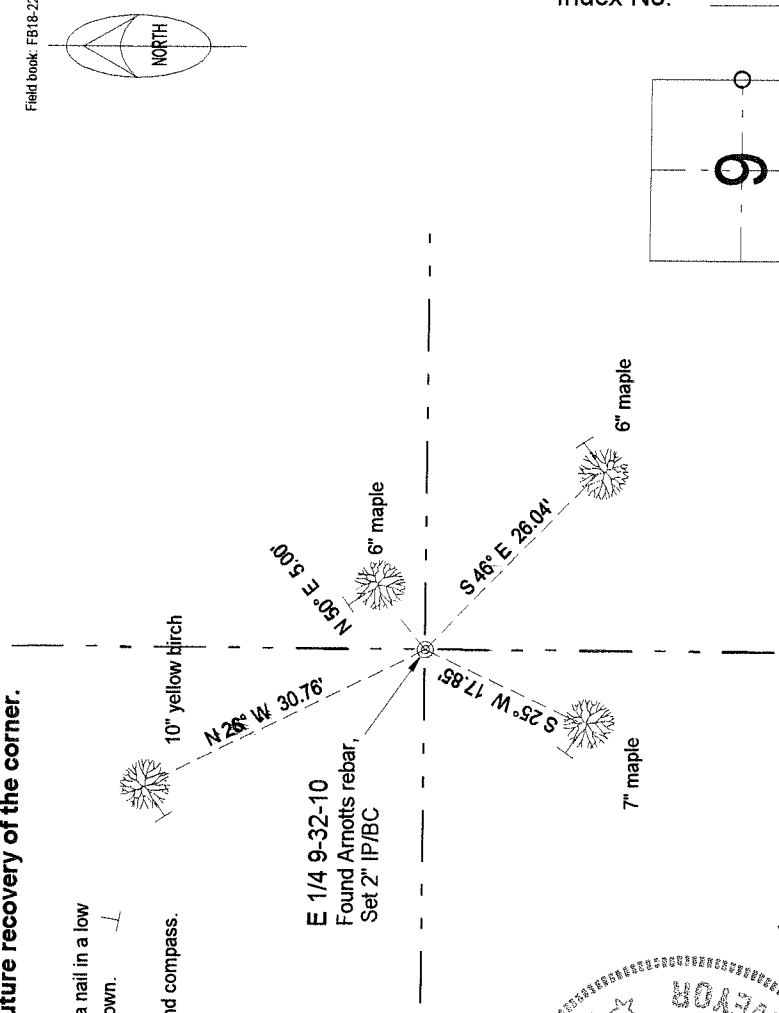
Describe the accessories used to perpetuate the corner. Include a plan view drawing and accessories found/set. Describe measuring point on bearing trees. Show any topographic features that would aid in future recovery of the corner.

LEGEND

Bearing trees are measured to a nail in a low blaze on the side of the tree shown.

BT's painted blue.

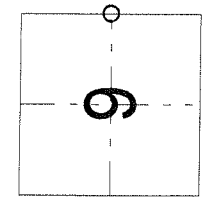
The bearings magnetic with hand compass.



DAVID E. TLUSTY
 S-3390
 ANTICO, WIS.
 REGISTERED LAND SURVEYOR

David E. Tlusty
 12/20/00

Index No. G13 32-10



○ = corner perpetuated
 The East Quarter
 corner of Section 9,
 T. 32 N., R. 10 E.,
 Langlade County, WI

I, David E. Tlusty, Registered Land Surveyor, as Langlade County Surveyor, certify that the corner location on this record was determined by me and that this U.S. Public Land Survey Monument Record is correct to the best of my knowledge and belief.