

LANGLADE COUNTY U.S. PUBLIC LAND CORNER RESTORATION

The South Quarter corner of Section 9, T. 32 N., R. 10 E., Langlade County, WI.

Corner was: (check all that apply)

- Restored through acceptance of an obliterated evidence location.
- Restored through acceptance of a found perpetuated location.
- Determined to be lost and re-established through proportionate methods.
- Show bearings and distances to PLSS corners used for proportioning, and show original distances).
- Restored/recovered/re-established in a location that differs from a previously established position.
- (Show difference in plan view below).
- Check here if additional information is shown on the reverse side of this form.

32/10090020

Describe record evidence, recovered physical evidence, occupational evidence, testimonial evidence and all other evidence considered in the recovery/restoration of the corner.

The original corner was established in 1860 by Hiram C. Fellows. Original bearing trees: tamarac, 7", S61°W, 19 links, and a tamarac, 8", N60°E, 24 lks. In 1916, Malcolm Hutchinson, ran the N-S 1/4 line of Section 16 (5130.84 ft.). He didn't describe this corner, other than "1/4 post" and later in his notes, mentions that he set 3" pipe at corners mentioned in his survey, this corner being one of them. In 1981, former surveyor Kelly found a 4" iron pipe at corners mentioned in two tree ties and a witness monument to the SW. 11/19/99 Dave Tlusty, Dean Williams found 3" iron pipe with foot plate. Pipe found has cap broken off and the pipe is leaning from frost and road grader action. All of Kellys ties are gone. Straightened the existing monument to determine the position, then replaced it with a 2" x 30" galvanized, brass capped iron pipe, top of which is 0.6' below the gravel road surface.

Physical description of the monument set:

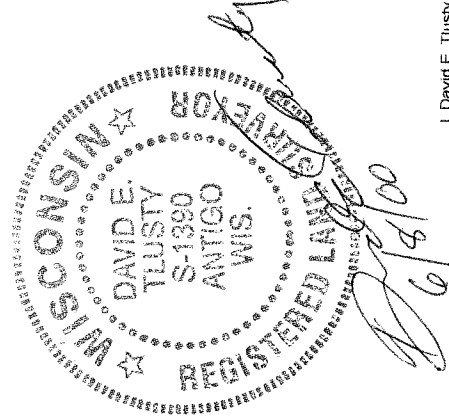
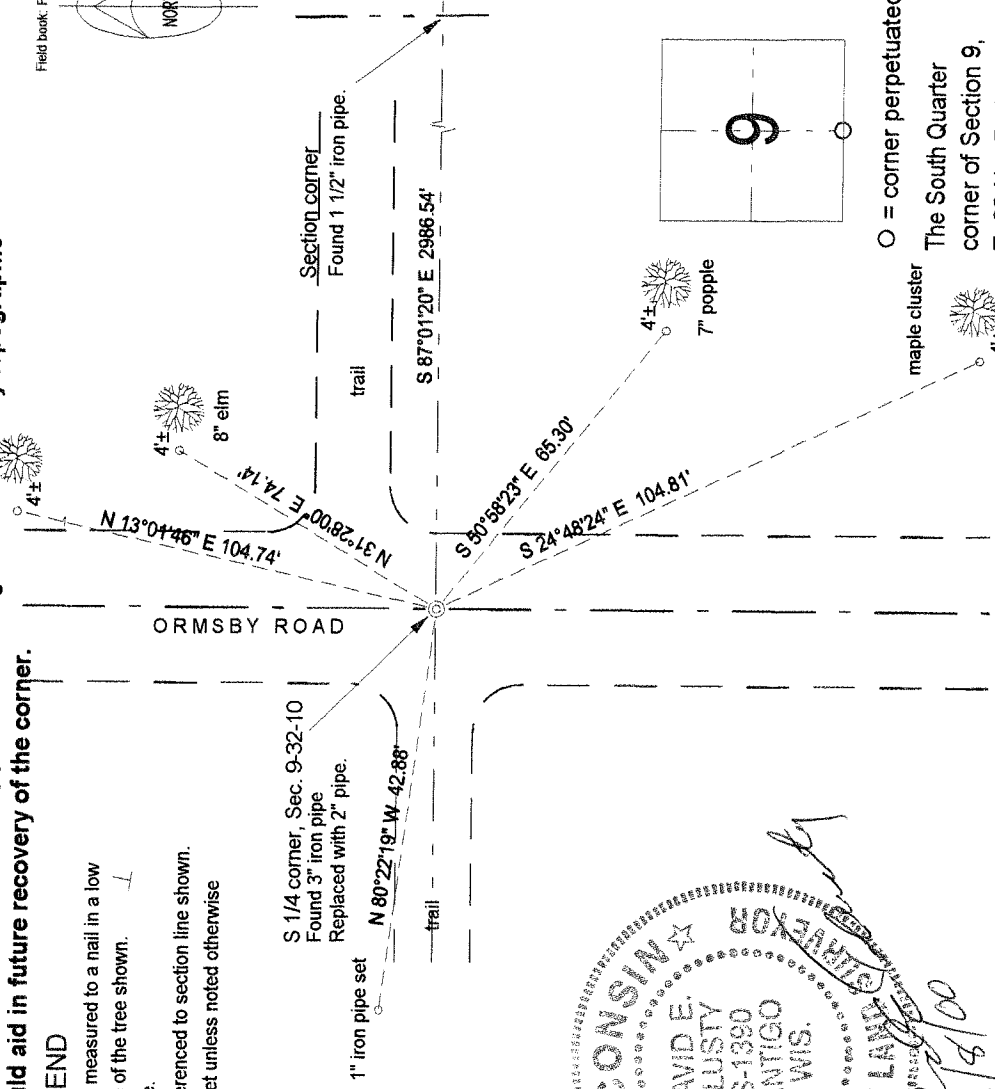
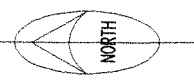
Set a 2" x 30" galvanized, flanged bottom iron pipe monument, with 3 1/4" brass cap stamped brass cap, top of which is 0.6' below the gravel road surface.

Describe the accessories used to perpetuate the corner. Include a plan view drawing and accessories found/set. Describe measuring point on bearing trees. Show any topographic features that would aid in future recovery of the corner.

LEGEND

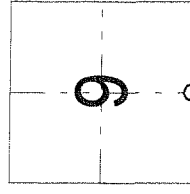
- Bearing trees are measured to a nail in a low blaze on the side of the tree shown.
- BT's painted blue.
- Tie bearings referenced to section line shown.
- 3/4" x 30" rebar set unless noted otherwise

Field book: FB18-20



I, David E. Tlusty, Registered Land Surveyor, as Langlade County Surveyor, certify that the corner location on this record was determined by me and that this U.S. Public Land Survey Monument Record is correct to the best of my knowledge and belief.

Index No. J11 32-10



○ = corner perpetuated
The South Quarter corner of Section 9, T. 32 N., R. 10 E., Langlade County, WI