

CERTIFIED LAND CORNER RESTORATION

Index No. J-11

State of Wisconsin }  
County of LANGLADE } ss.

I WILLIAM F. KELLY, do hereby certify that on the 21<sup>ST</sup> day of OCTOBER, 1981, I found evidence of the S 1/4 corner of SECT. 9 Township 32, North, Range 10 EAST, Fourth Principal Meridian, as described hereon; and that from this evidence I established a new monument and accessories as described hereon to perpetuate the original location of this corner.

Resident witnesses:

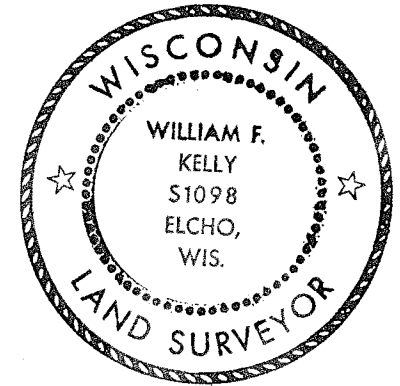
.....  
.....  
.....

History of original corner establishment:

ORIGINAL CORNER ESTABLISHED BY  
HIRAM C. FELLOWS IN SEPT., 1860

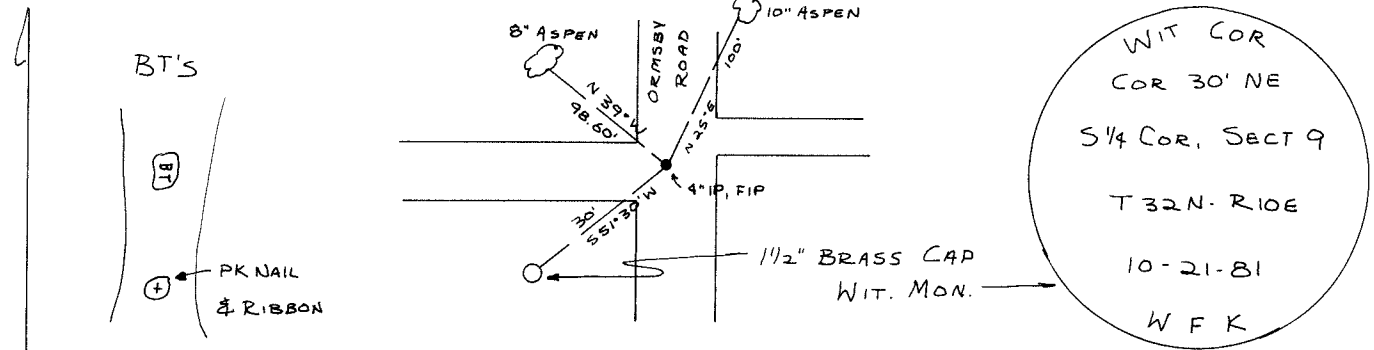
Description of corner evidence found:

4" IRON PIPE, FOUND IN PLACE

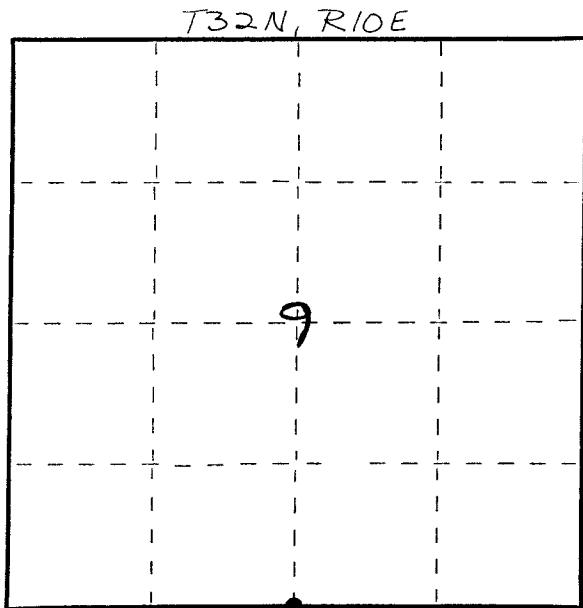


*William F. Kelly*

SET 1/2" x 42" BLACK IRON PIPE WITH BRASS CAP MONUMENT.  
Description of monument and accessories I established to perpetuate the original location of this corner.



FORM 985 H. C. MILLER CO., MILWAUKEE



○ = Corner monument restored.

Dated at ELCHO, Wis., this 21<sup>ST</sup> day of OCTOBER, 1981.

Signature William F. Kelly Title COUNTY SURVEYOR Registration No. 1098  
(County Surveyor, Registered Land Surveyor, or other duly authorized official)

Office of Register of Deeds, County of....., I hereby certify that the within instrument was filed in this office for record on the..... day of....., 19..... at..... o'clock..... M.

.....  
(Register of Deeds)

By..... Deputy