

**LANGLADE COUNTY
U.S. PUBLIC LAND CORNER RESTORATION**

The East Quarter corner of Section 8, T. 32 N., R. 10 E., Langlade County, WI.

Corner was: (check all that apply)

3210082000

- Restored through acceptance of an obliterated evidence location.
- Restored through acceptance of a found perpetuated location.
- Determined to be lost and re-established through proportionate methods.
- Show bearings and distances to PLSS corners used for proportioning, and show original distances).
- Restored/recovered/re-established in a location that differs from a previously established position.
- (Show difference in plan view below).
- Check here if additional information is shown on the reverse side of this form.

Describe record evidence, recovered physical evidence, occupational evidence, testimonial evidence and all other evidence considered in the recovery/restoration of the corner.


The original corner was established in 1860 by Hiram C. Felows. Original bearing trees: tamarac, 9", N86°W, 15 links, and a tamarac, 8", S59°E, 11 lks. In 1916, Malcolm Hutchinson found no evidence of this corner and re-established it by single proportionate methods. He set a 3" x 3' long iron pipe with cap for the corner. 10/27/99 Dave Tlusty, Tom Arnott found a 3" iron pipe with cap on top and plate on bottom. Pipe as found is frost heaved and leaning. Accepted it as the pipe set by Hutchinson. Also found 2 - 3/4" x 42" iron pipes lying on the ground next to the corner monument. Re-dug Hutchinsons 3" pipe monument.

Physical description of the monument set:

Reset the existing 3" iron pipe. Set a white vinyl sign post 1' west of the corner monument.

Describe the accessories used to perpetuate the corner. Include a plan view drawing and accessories found/set. Describe measuring point on bearing trees. Show any topographic features that would aid in future recovery of the corner.

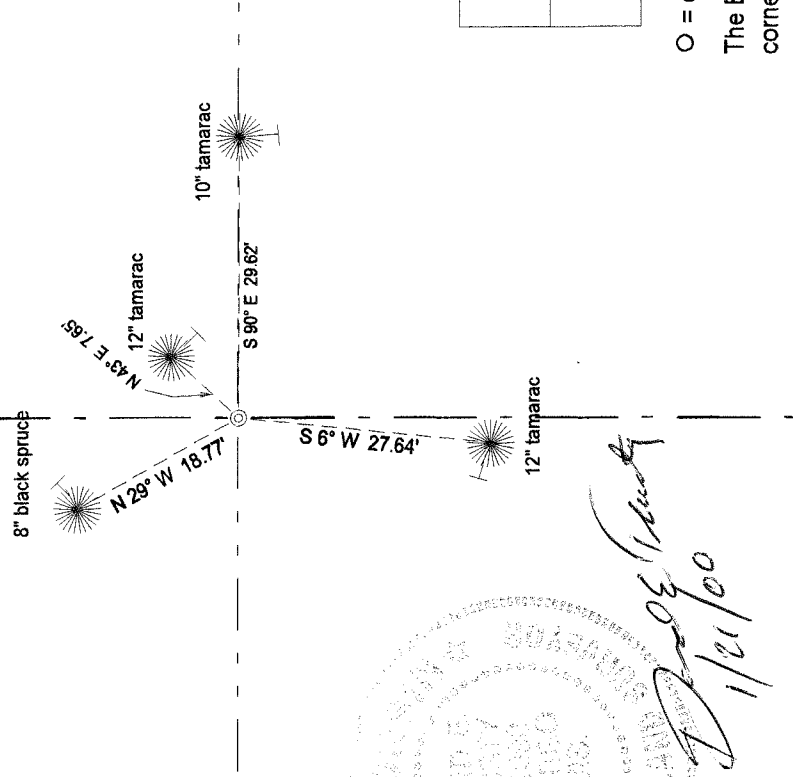
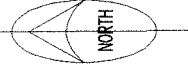
LEGEND

Bearing trees are measured to a nail in a low blaze on the side of the tree shown. 

BT's painted blue.

Tie bearings magnetic with hand compass.

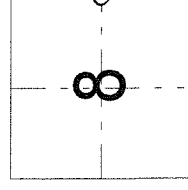
Field book: FB 18-08



I, David E. Tlusty, Registered Land Surveyor, as Langlade County Surveyor, certify that the corner location on this record was determined by me and that this U.S. Public Land Survey Monument Record is correct to the best of my knowledge and belief.

Index No. _____

G 9 32-10



○ = corner perpetuated

The East Quarter
corner of Section 8,
T. 32 N., R. 10 E.,
Langlade County, WI