

# U.S. PUBLIC LAND SURVEY MONUMENT RECORD

(Prepared and as required by S. A-E 7.08 WI Administrative Code)

The N 1/4 corner of Section 17, T. 32 N., R. 10 E., Langlade County, WI

Corner was: (check all that apply)

- Restored through acceptance of an obliterated evidence location.
- Restored through acceptance of a found perpetuated location.
- Determined to be lost and re-established through proportionate methods.  
(Show bearings and distances to PLSS corners used for proportioning.)
- Restored/recovered/reestablished in a location that differs from a previously established position. (Show difference in plan view below.)

- Check here if additional information is shown on the reverse side of this form.

**Describe record evidence, recovered physical evidence, occupational evidence, testimonial evidence and all other evidence considered in the recovery/restoration of the corner.**

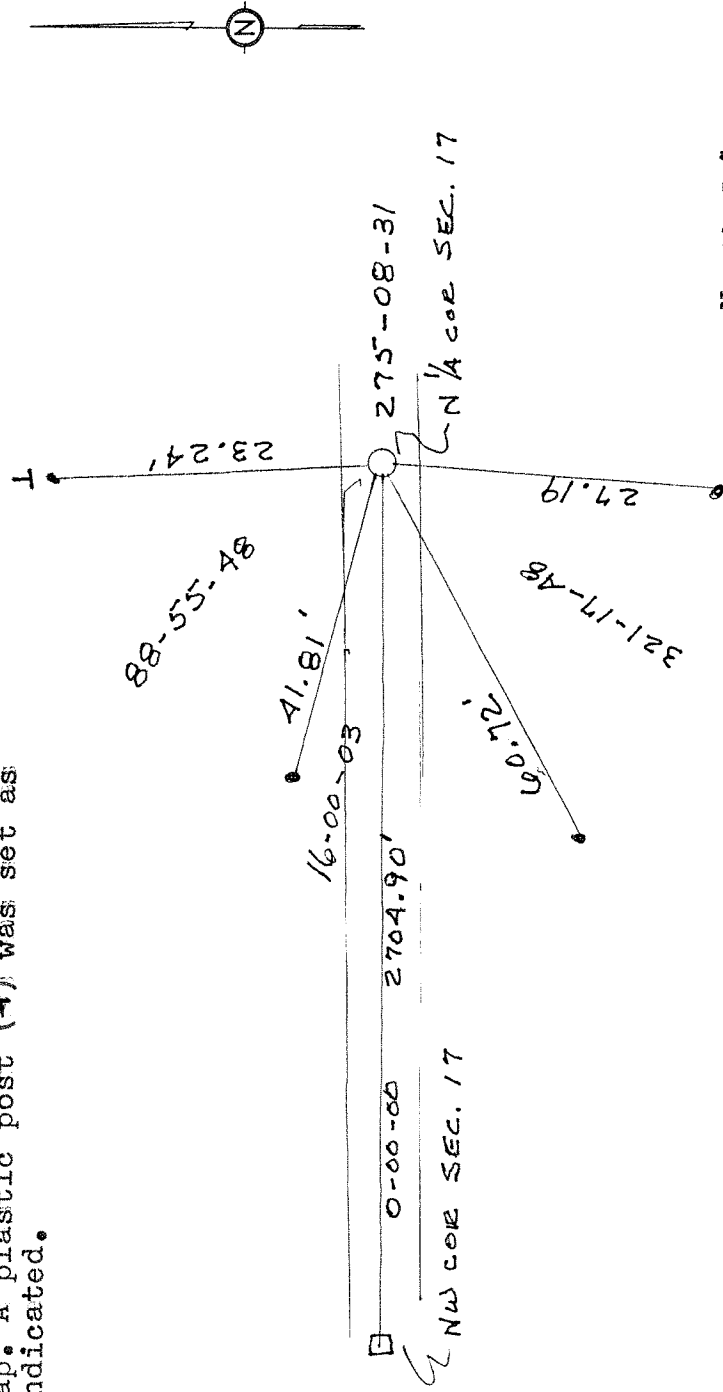
Original survey was done in 1860 by Hiram Fellows. At the time the bearing trees were Elm 12 N13E 56lks and a Tam 7 N9W 45lks. In Dec. 1916 Malcom Hutchinson measured east from a stone at the northwest corner of section 17 41.01 chs and found stumps of original BT's and post. At that time he set an iron pipe for the center of road but no new BT's. No iron pipe was found. There was a culvert put in right at the place where the iron pipe would have been. I set a new corner 1 1/2 rods south of an old fence paralleling the road and at the extension of an old fence leading north.

**Physical description of the monument set:**

I set a 1 inch iron pipe 30 inches long with a 2 inch aluminum cap a the location of the corner. Cap was stamped to designate the corner. Distance from the northwest corner of section to new corner was 2704.90'

Describe the accessories used to perpetuate the location of the corner. Include a plan view drawing and indicate accessories found/set. Describe measuring point on bearing trees. Show any topographic features that would aid in future recovery of the corner.

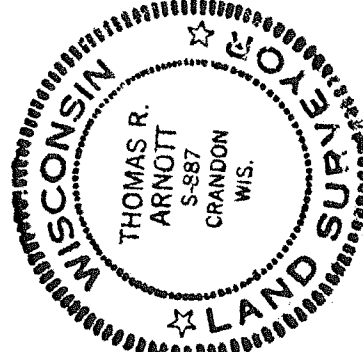
3/4 inch rebar was set for witness corners and each had a red plastic cap. A plastic post (T) was set as indicated.



SURVEYORS SEAL

The North 1/4 corner of Section 17

T. 32 N., R. 10 E.  
Langlade County, WI



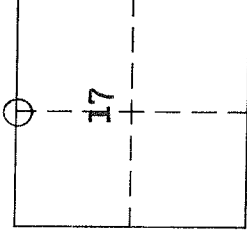
I, Thomas Arnott, certify that the corner location shown on this record was determined by me or under my direction and control and that this U.S. Public Land Survey Monument Record is correct and complete to the best of my knowledge and belief.

*Thomas Arnott*  
Signature

13 Nov. 1998

Date

INDEX No. J-7



○ = Location of corner