

LANGLADE COUNTY U.S. PUBLIC LAND CORNER RESTORATION

The Southeast corner of Section 8, T. 32 N., R. 10 E., Langlade County, WI.

Corner was: (check all that apply)

- Restored through acceptance of an obliterated evidence location.
- Restored through acceptance of a found perpetuated location.
- Determined to be lost and re-established through proportionate methods.
- Show bearings and distances to PLSS corners used for proportioning, and show original distances).
- Restored/recovered/re-established in a location that differs from a previously established position.
- (Show difference in plan view below).
- Check here if additional information is shown on the reverse side of this form.

3210080000

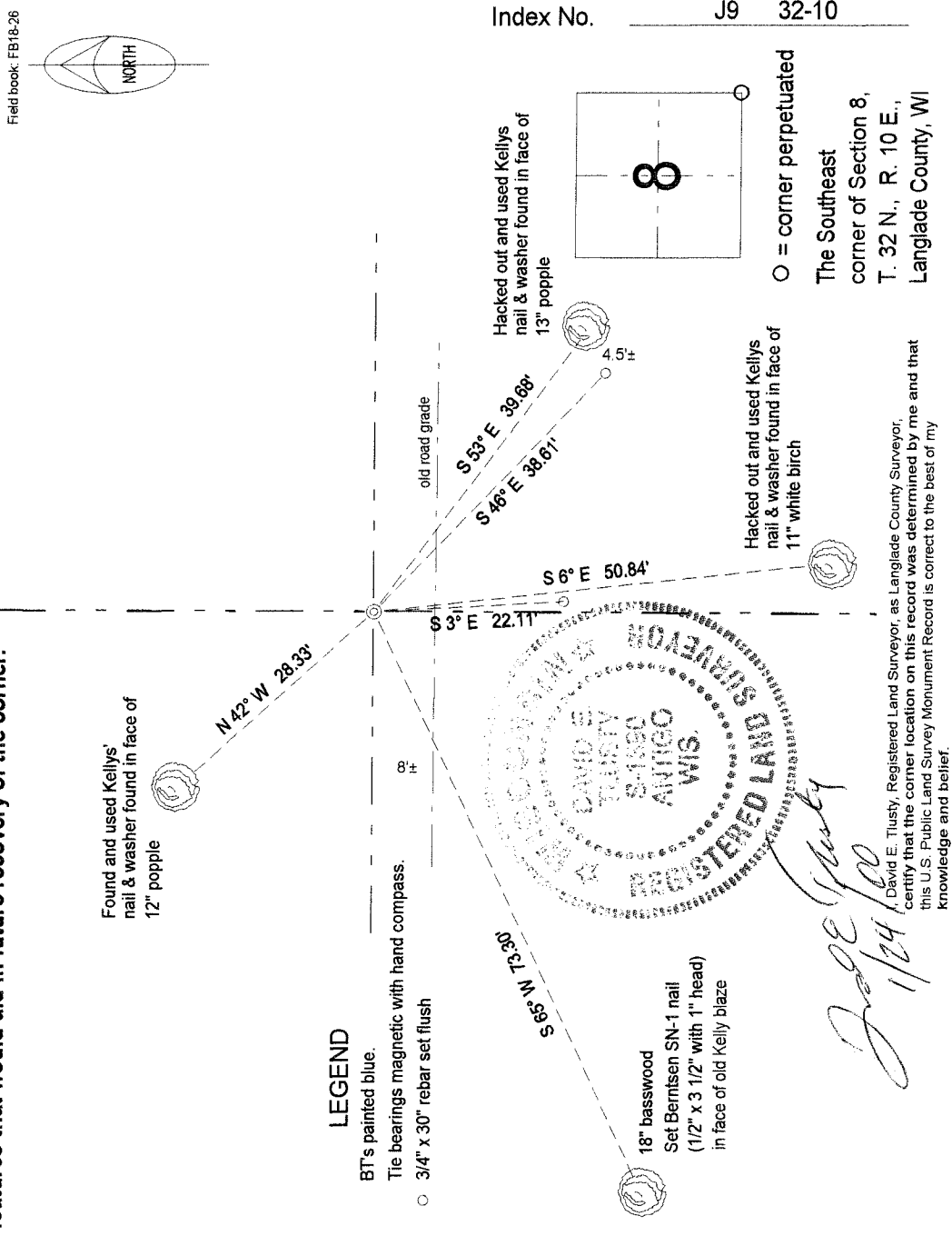
Describe record evidence, recovered physical evidence, occupational evidence, testimonial evidence and all other evidence considered in the recovery/restoration of the corner.

The original corner was established in 1860 by Hiram C. Fellows. Original bearing trees: spruce, 8", S80°E, 36 links, and a fir, 6", N55°W, 25 lks. In 1916, Malcolm Hutchinson found one original BT, set a 3" iron pipe for the corner and marked a new BT: spruce, 14", N39°E, 42 links (27.7'). In 1974, former surveyor Kelly and two local residents, R. Kohn and C.A. McEacheren, "found corner down where hit by road mach. Found hole where it had been". They set a 2" iron pipe w/BC and a guard post and marked three BT's. In 1988, former surveyor Kelly found the "existing 2" I.P. with brass cap bent over by heavy equipment. He set a new 3" alum. monument and est. new witness trees. 12/09/99 Dave Tlusty, Dean Williams Found Kellys alum. monument leaning in alder brush next to roadway. Re-established corner location from 3 of Kellys BT's and set the monument shown below in the hole where the monument had been.

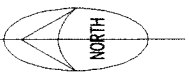
Physical description of the monument set:

Set a 2" x 30" iron pipe with brass cap, top of which is 0.2' below dirt roadway. Re-measured ties as shown below.
Set white vinyl sign post 1.5' north of corner monument.

Describe the accessories used to perpetuate the corner. Include a plan view drawing and accessories found/set. Describe measuring point on bearing trees. Show any topographic features that would aid in future recovery of the corner.



Field book: FB18-26



Index No. J9 32-10

○ = corner perpetuated
The Southeast corner of Section 8, T. 32 N., R. 10 E., Langlade County, WI

David E. Tlusty, Registered Land Surveyor, as Langlade County Surveyor, certify that the corner location on this record was determined by me and that this U.S. Public Land Survey Monument Record is correct to the best of my knowledge and belief.

David E. Tlusty
1/24/00