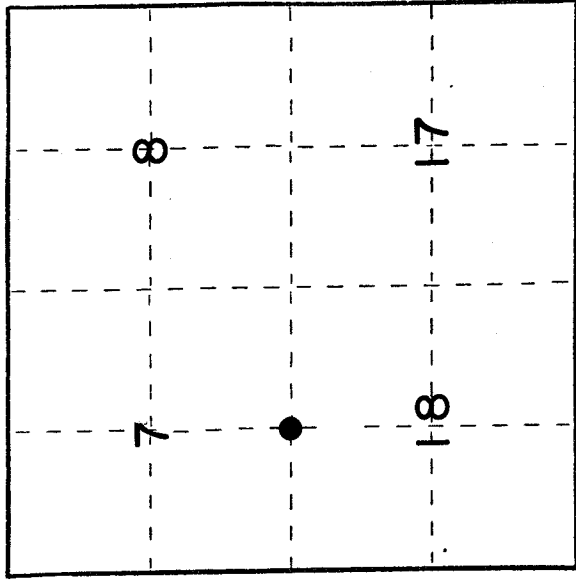


# U. S. PUBLIC LAND SURVEY MONUMENT RECORD

**I N S T R U C T I O N S :** This record shall show the location of the corner and shall include all of the following nine elements (a through i).

- (a) Identify the corner by reference to the U.S. public land survey system.  
 O = Corner monument restored.

South Quarter Corner of Section 7  
 Township 32 North, Range 10 East  
 Langlade County, Wisconsin



T32N R10E

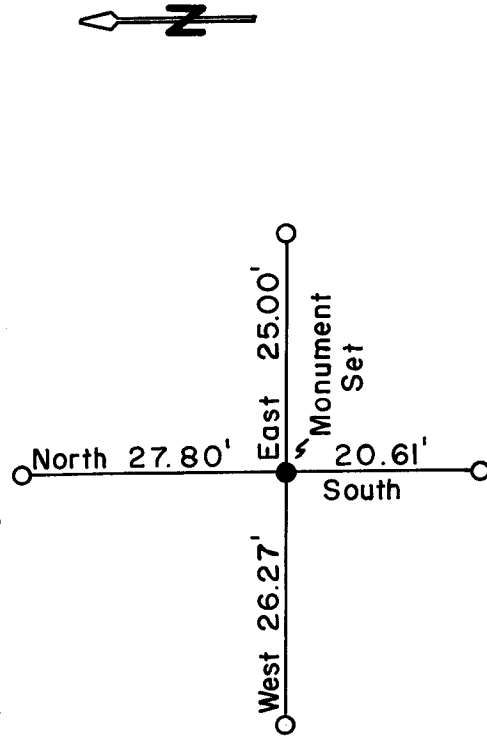
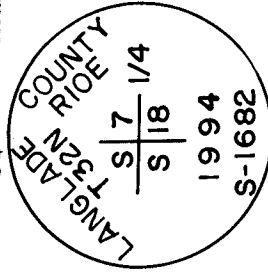
- (b) Describe any record evidence, monument evidence, occupational evidence, occupational evidence, testimonial evidence or any other material evidence you considered, and whether the monument was found or placed.  
 Original corner established in 1860 by Hiram C. Fellows, Gov't Deputy Surveyor from which 10" Tamarack bears S26E - 10 lks. and 10" Tamarack bears N44W - 16 lks.  
 Searched for original or subsequent survey corner or accessories, no visible evidence. Area is now open swamp marsh and tag alder.  
 Reestablished quarter corner by proportionate method. Total distance from southeast section corner to southwest section corner of Section 7 is 5173.53'. Original recorded distance 5289.90' (80.15 chs). Set quarter corner 2581.92' of southeast section corner and 2591.61' of southwest section corner on a straight line between the two.  
 In the plan view drawing below, provide reference ties to at least 4 witness monuments, or, if the location is within a municipality, to at least 2 witness monuments. (Witness monuments shall be made of concrete, natural stone, iron or other equally durable material.) Describe witness monuments.

- (c) x = set four (4) re-bar, projecting 12" above ground.

- (d) Show a plan view drawing depicting the relevant monuments and reference ties which is sufficient in detail to enable accurate relocation of the corner monument if the corner monument is disturbed. Indicate north.

**Monument Set**

2" aluminum pipe monument with 3/4" aluminum cap.



O - Set four (4) 1/2" x 7' Re-bar projecting 12" above ground.

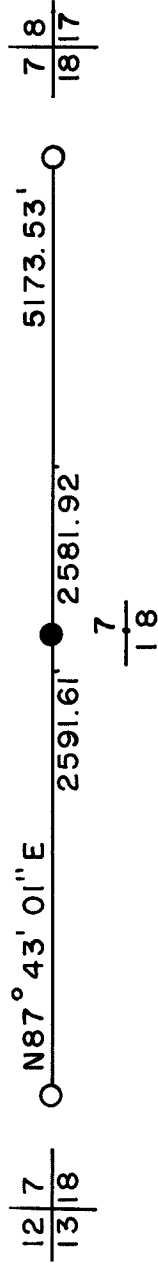
12" Above ground

(e) Describe any material discrepancy between the location of the corner as restored or reestablished and the location of that corner as previously restored or reestablished by distance and direction. Show the discrepancy on the plan view drawing under (d), above. Show the distances between the corner as previously restored or reestablished and (1) the corner as restored or reestablished, and (2) to at least 2 of the witness monuments shown on the drawing in (d), above.

(f) Was the corner restored through acceptance of (1) an obliterated evidence location, or, (2) a found perpetuated location?

(g&h) Was the corner reestablished through lost corner proportionate methods? If so, show the method, including the directions and distances to other public land survey corners used as evidence or used for proportioning in determining the corner location?

Proportionate method



(i) I, Glen Barker (type or print name) certify that the corner location shown on this record was determined by me or under my direction and control and that this U.S. Public Land Survey Monument Record is correct and complete to the best of my knowledge and belief.

*Glen Barker*

Signature

5/6/95

Date

