

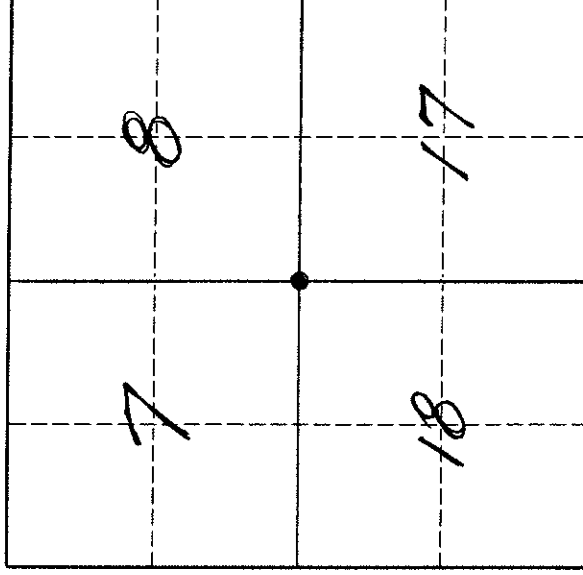
U. S. PUBLIC LAND SURVEY MONUMENT RECORD

I N S T R U C T I O N S:

- (a) Identify the corner by reference to the U.S. public land survey system.
- = Corner monument restored.

The Southeast Corner of Section 7,
Township 32 North,
Range 10 East,
Langlade County,
Wisconsin.

This record shall show the location of the corner and shall include all of the following nine elements (a through i).



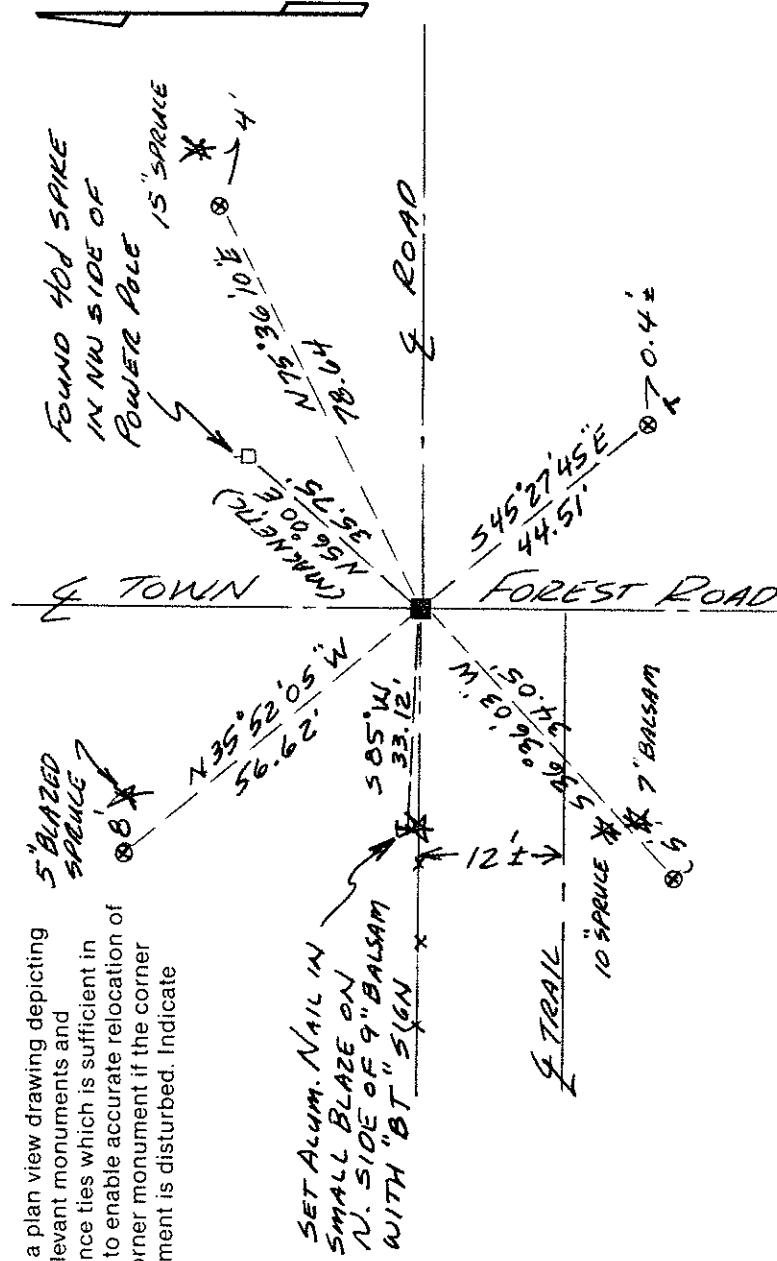
T. 32 N., R. 10 E.

- (b) Describe any record evidence, monument evidence, occupational evidence, testimonial evidence or any other material evidence you considered, and whether the monument was found or placed.
The original corner was established in 1860 by H.C. Fellows. Original bearing trees: spruce, 6, N42E, 34 lks., lind, 12", N56W, 55 lks. B.F. Dorr, in 1895, called the corner a grey boulder, 6" x 12"x 30" with an "X" on top and dishes under it. On 9/27/94, we dug for the corner and found Dorrs stone exactly as described above, top of which is 18" below road surface. Set 3/4" x 30" re-bar on north side of stone, 0.8' north of "X" on stone.

- (c) In the plan view drawing below, provide reference ties to at least 4 witness monuments, or, if the location is within a municipality, to at least 2 witness monuments. (Witness monuments shall be made of concrete, natural stone, iron or other equally durable material.) Describe witness monuments.

⊙ = 3/4" x 30" re-bar with red plastic cap set flush with ground.
⬇ = white vinyl sign post with "Survey Marker" sign set.

- (d) Show a plan view drawing depicting the relevant monuments and reference ties which is sufficient in detail to enable accurate relocation of the corner monument if the corner monument is disturbed. Indicate north.



J5

Describe any material discrepancy between the location of the corner as restored or reestablished and the location of that corner as previously restored or reestablished by distance and direction. Show the discrepancy on the plan view drawing under (d), above. Show the distances between the corner as previously restored or reestablished and (1) the corner as restored or reestablished, and (2) to at least 2 of the witness monuments shown on the drawing in (d), above.

Former surveyor Kelly, on map #10329 shows this corner to be a 3/4" iron rod found. The stone found is approximately 2.9', ENE of the iron rod. The iron rod was set as a traverse point in the 1970's by WPS when doing a preliminary study for a new transmission line.

(f) Was the corner restored through acceptance of (1) an obliterated evidence location, or, (2) a found perpetuated location?
A found perpetuated location.

(g & h) Was the corner reestablished through lost corner proportionate methods? If so, show the method, including the directions and distances to other public land survey corners used as evidence or used for proportioning in determining the corner location.
No.

(i) I, David E. Tlusty, Langlade County Surveyor,
(type or print name)

certify that the corner location shown on this record was determined by me or under my direction and control and that this U.S. Public Land Survey Monument Record is correct and complete to the best of my knowledge and belief.

David E. Tlusty
Signature

10/4/94
Date

