

# U.S. PUBLIC LAND SURVEY MONUMENT RECORD

(Prepared and as required by S. A-E 7.08 WI Administrative Code)

The Center of Section 6, T.32 N., R.10 E, Langlade County, WI

Corner was: (check all that apply)

- Restored through acceptance of an obliterated evidence location
- Restored through acceptance of a found perpetuated location.
- Determined to be lost and re-established through proportionate methods.  
(Show bearings and distance to PLSS corners used for proportioning.)
- Restored/recovered in a location that differs from a previously established position.  
(Show difference in plan view below.)

- Check here if additional information is shown on the reverse side of this form.

Describe record evidence, recovered physical evidence, occupational evidence, testimonial evidence and all other evidence considered in the recovery/restoration of the corner.

The center 1/4 was not set as part of original Government Land Office survey.

All eight Government Land Office corners for this section have been perpetuated, with corner monumentation sheets on file in Langlade County land records.

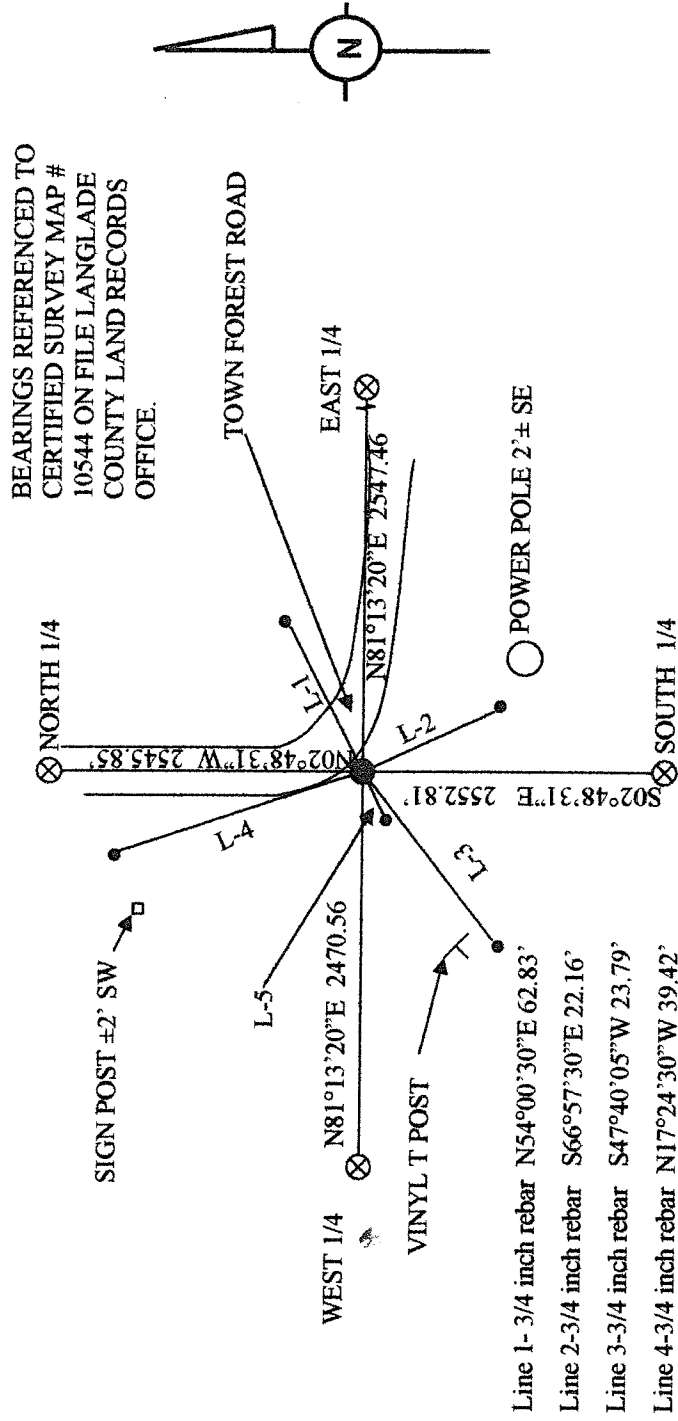
I found a 3/4 inch steel pin which had been set by the land owner at the approximate corner location.

March, 2005- Center 1/4 corner established by me at intersection of 1/4 lines.

Physical description of the monument set:

2.375 inch X 30 inch iron pipe with a 3.25 inch Langlade county brass cap, set 4 inches below gravel surface. Witness ties per sketch below

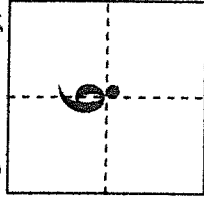
Describe the accessories used to perpetuate the location of the corner. Include a plan view drawing and indicate accessories found/set. Describe measuring point on bearing trees. Show any topographic features that would aid in future recovery of the corner.



INDEX NO. C-3 32-10

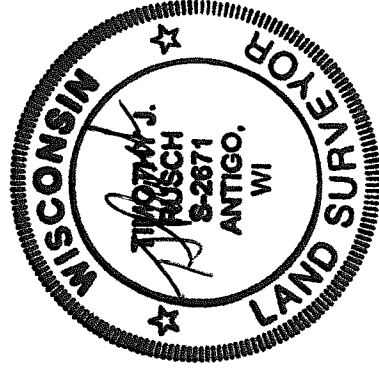
The Center  
of Section 6

T.32N., R.10E.  
Langlade County, WI



● = Location of Corner

SURVEYOR'S SEAL



I, TIMOTHY J. RUSCH, certify that the  
Corner location shown on this record was determined  
By me or under my direction and control and that this  
U.S. Public Land Survey Monument Record is correct  
And complete to the best of my knowledge and belief.

Timothy J. Rusch    6-29-2005    Date  
Signature