

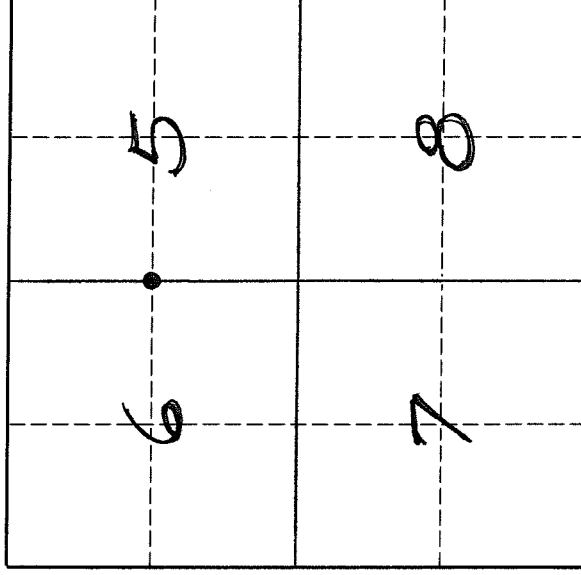
U. S. PUBLIC LAND SURVEY MONUMENT RECORD

I N S T R U C T I O N S:

This record shall show the location of the corner and shall include all of the following nine elements (a through i).

- (a) Identify the corner by reference to the U.S. public land survey system.
- = Corner monument restored.

The West Quarter corner of Section 5, Township 32 North, Range 10 East, Langlade County, Wisconsin.



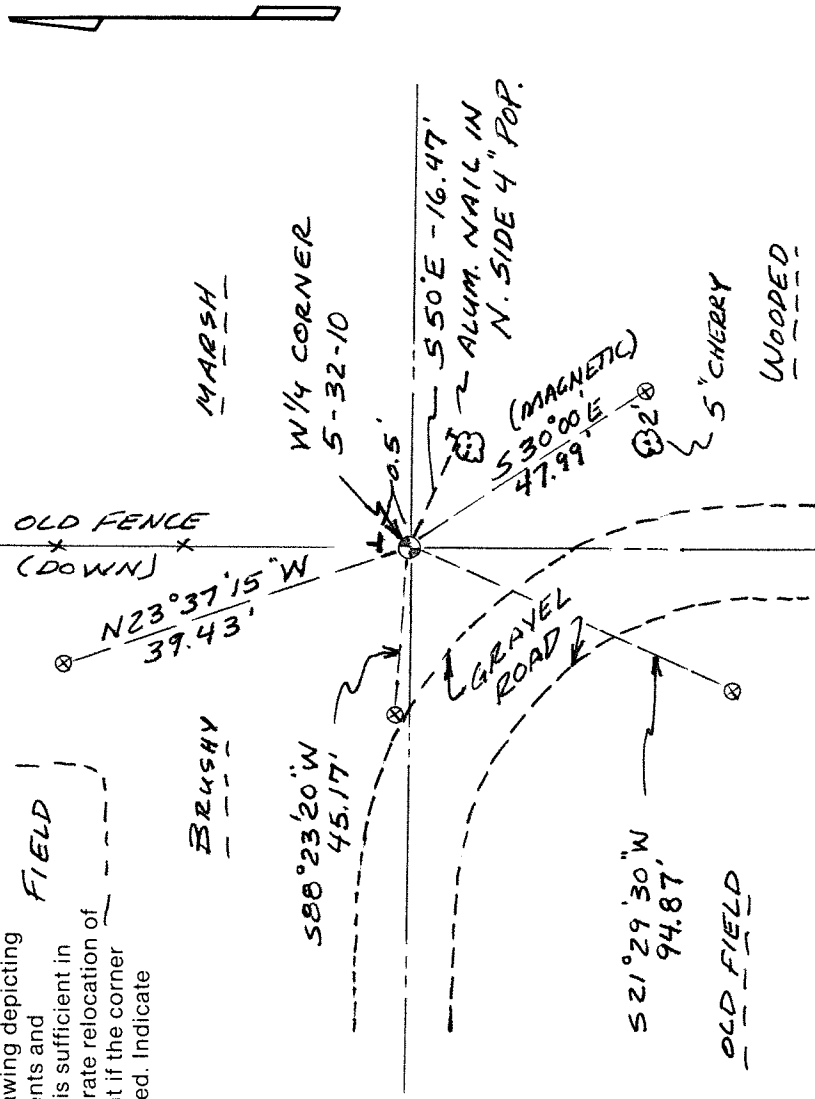
T. 32 N., R. 10 E.

- (b) Describe any record evidence, monument evidence, occupational evidence, testimonial evidence or any other material evidence you considered, and whether the monument was found or placed.
 The original corner was established in 1860 by Hiram C. Fellows. Original bearing trees: birch, 10", S28E, 15 lks., spruce, 14", N33W, 17 lks. In 1895, B.F. Dorr, called this corner a boulder, 5" x 6" x 32" with "x" on top. On 09/27/94, we dug with a backhoe and found a stone, 12" x 20" x 30" over white broken dishes. From past experience with Dorr, it was common for him to note the exposed length and width, along with the true measured height of the stone, therefore, although the length and width dimensions are significantly different that what Dorr indicated, the height is about the same and the stone was found over broken dishes as described. I accept the position of the stone and broken dishes as the best evidence of the original corner location. I removed the stone and set a 1 1/4" x 36" iron pipe with 4" brass cap to mark the corner.

- (c) In the plan view drawing below, provide reference ties to at least 4 witness monuments, or, if the location is within a municipality, to at least 2 witness monuments. (Witness monuments shall be made of concrete, natural stone, iron or other equally durable material). Describe witness monuments.
 ● = 3/4" x 30" re-bar with red plastic cap set flush with ground.
 ⊥ = white vinyl sign post with "Survey Marker" sign set

⊥ = white vinyl sign post with "Survey Marker" sign set

- (d) Show a plan view drawing depicting the relevant monuments and reference ties which is sufficient in detail to enable accurate relocation of the corner monument if the corner monument is disturbed. Indicate north.



SKETCH
NOT TO SCALE!

05

Describe any material discrepancy between the location of the corner as restored or reestablished and the location of that corner as previously restored or reestablished by distance and direction. Show the discrepancy on the plan view drawing under (d), above. Show the distances between the corner as previously restored or reestablished and (1) the corner as restored or reestablished, and (2) to at least 2 of the witness monuments shown on the drawing in (d), above.

No discrepancy.

- (f) Was the corner restored through acceptance of (1) an obliterated evidence location, or, (2) a found perpetuated location?
A found perpetuated location.

- (g & h) Was the corner reestablished through lost corner proportionate methods? If so, show the method, including the directions and distances to other public land survey corners used as evidence or used for proportioning in determining the corner location.

No.

- (i) I, David E. Tlusty, Langlade County Surveyor.
(type or print name)

certify that the corner location shown on this record was determined by me or under my direction and control and that this U.S. Public Land Survey Monument Record is correct and complete to the best of my knowledge and belief.


Signature

10/4/94
Date

