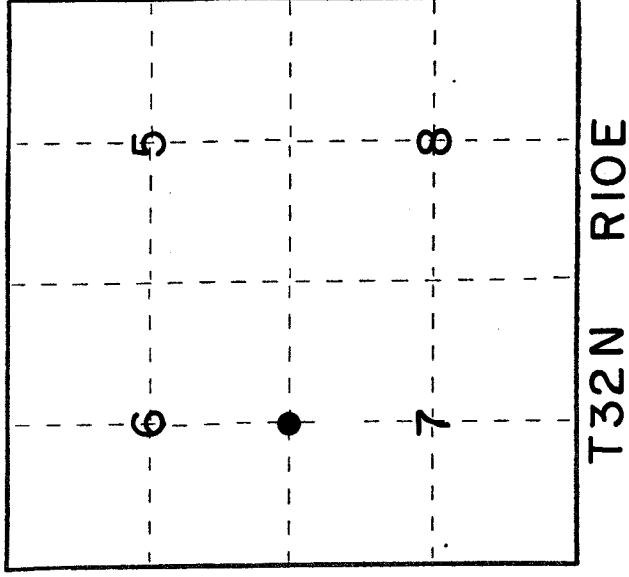


U. S. PUBLIC LAND SURVEY MONUMENT RECORD

INSTRUCTIONS: This record shall show the location of the corner and shall include all of the following nine elements (a through i).

(a) Identify the corner by reference to the U.S. public land survey system.
 ○ = Corner monument restored.

North Quarter Corner of Section 7
 Township 32 North, Range 10 East
 Langlade County, Wisconsin



(b) Describe any record evidence, monument evidence, monument evidence, occupational evidence, testimonial evidence or any other material evidence you considered, and whether the monument was found or placed.
 Original corner established in 1860 Hiram C. Fellows, Gov.t Deputy Surveyor, from which ~~SPRUE 10" BEARS N26E 11 1/2 S AND TAMARACK 8" BEARS S85W 18 LKS~~

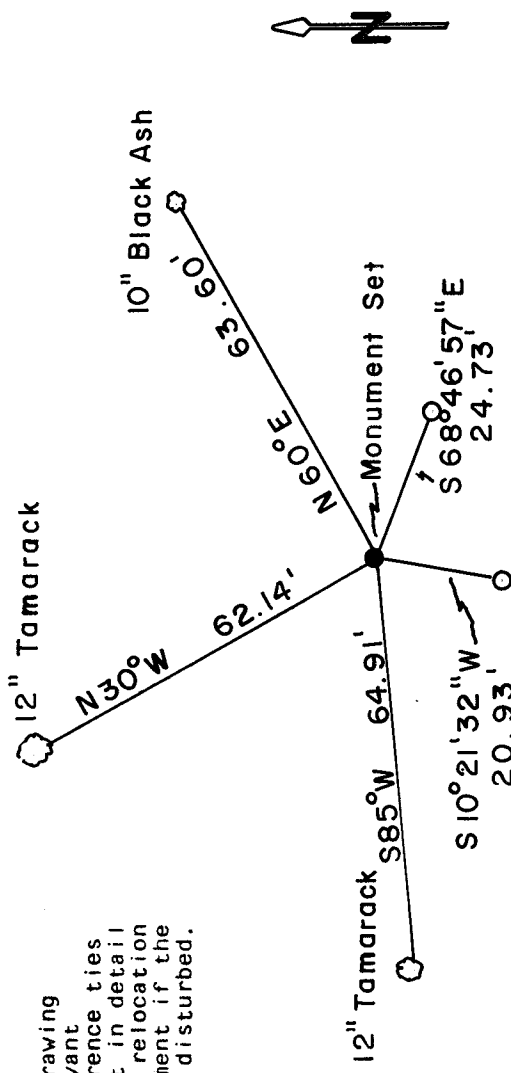
In 1895, B.F. Dorr, County Surveyor, either reestablished or recovered the original corner. His field notes are to brief to determine which.

Search for his stone and 11" Tamarack Stump, S24W - 34.5 lks. No evidence of either.

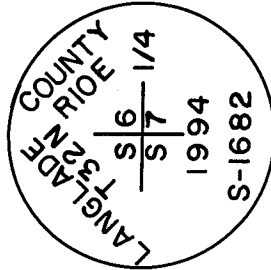
To reestablish this position I retraced Dorrs' survey of Section 6, T32N-R10E.

(c) From north quarter to center quarter position (a point at the intersection of roads north and east) Section 6, computed bearing and extended line south (over) in the plan view drawing below, provide reference ties to at least 4 witness monuments, or, if the location is within a municipality, to at least 2 witness monuments. (Witness monuments shall be made of concrete, natural stone, iron or other equally durable material.) Describe witness monuments.

(d) Show a plan view drawing depicting the relevant monuments and reference ties which is sufficient in detail to enable accurate relocation of the corner monument if the corner monument is disturbed. Indicate north.



Monument Set



2" aluminum pipe monument with 3/4" aluminum cap, 15" Above Ground

○ Set two 1/2" x 7' Re-bar

⊙ Marked bearing tree
 Measured to nail in side of tree.

(e) Describe any material discrepancy between the location of the corner as restored or reestablished and the location of that corner as previously restored or reestablished by distance and direction. Show the discrepancy on the plan view drawing under (d), above. Show the distances between the corner as previously restored or reestablished and (1) the corner as restored or reestablished, and (2) to at least 2 of the witness monuments shown on the drawing in (d), above.

to intersect previous section line established between Sections 6 & 7.

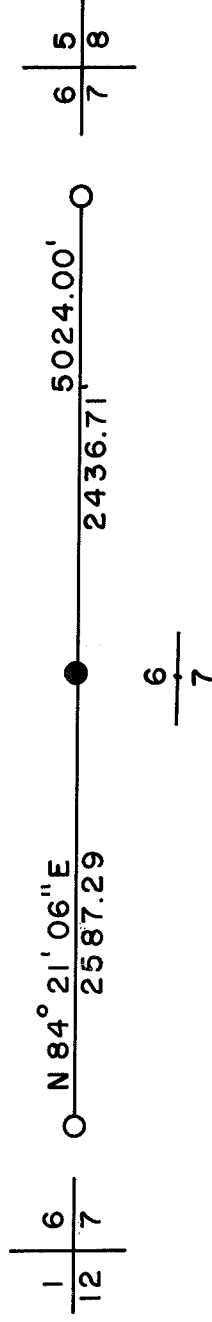
Dorris' recorded distance from northeast section corner to north quarter corner Section 7 was 2436.72' (36.92 chs). Our distance by bearing - bearing intersect is 2436.71'.

Because of insufficient notes by Dorr and the reestablished northwest section corner of Section 7, I do not know if the quarter corner is in the proper position north and south. I feel this procedure was the best available to keep harmony in Section 6, that exist with local conditions.

(f) Was the corner restored through acceptance of (1) an obliterated evidence location, or, (2) a found perpetuated location?

(g&h) Was the corner reestablished through lost corner proportionate methods? If so, show the method, including the directions and distances to other public land survey corners used as evidence or used for proportioning in determining the corner location?

Retracement of survey by B.F. Dorr, 1895.



(i) I, Glen Barker (type or print name) certify that the corner location shown on this record was determined by me or under my direction and control and that this U.S. Public Land Survey Monument Record is correct and complete to the best of my knowledge and belief.

Glen Barker
Signature

5/6/95
Date

