

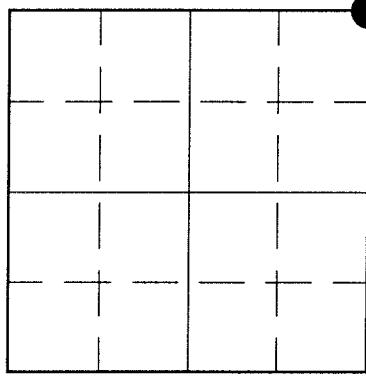
3210060000

U.S. PUBLIC LAND SURVEY MONUMENT RECORD

HISTORY OF ORIGINAL CORNER ESTABLISHMENT AND SUBSEQUENT RESTORATION AND DESCRIPTION OF ANY RECORD, MONUMENT OCCUPATIONAL, TESTIMONIAL OR OTHER EVIDENCE CONSIDERED:

THE ORIGINAL CORNER WAS ESTABLISHED IN 1860 BY HIRAM C. FELLOWS. ORIGINAL BEARING TREES: BIRCH 8" S72W, 31LKS., SUGAR MAPLE 12" N88E 29 LKS. IN 1974, ROBERT POSS FOUND "LARGE STONE IN ROAD, X-CUT OFF BY ROAD MACHINERY, PUT IRON BENEATH AND ALONGSIDE OF STONE, AND SET IRON PIPES W/BRASS CAP WITNESS CORNERS AT 50' INTERVALS DUE WEST". IN 1994 GLEN BARKER VISITED CORNER DOING WORK IN SECTION 7 FOR CONSOLIDATED PAPER CO. 06/24/99 GERRY AND BECKY BAHAR DUG BY HAND IN ROAD, FOUND LARGE STONE WITH IRON ALONGSIDE BUT NO TRACE OF WITNESS CORNERS (WIPE OUT BY CONSTRUCTION OF A LOGGING ROAD). COMPUTED LOCATION USING BARKER'S INFORMATION CHECKED WITH LOCATION OF LARGE STONE. WE SET A 2" X 30" BRASS CAPPED LANGLADE CO. MONUMENT ABOVE THE STONE, 3" BELOW GRAVEL SURFACE AND TIED OUT.

● = LOCATION OF CORNER

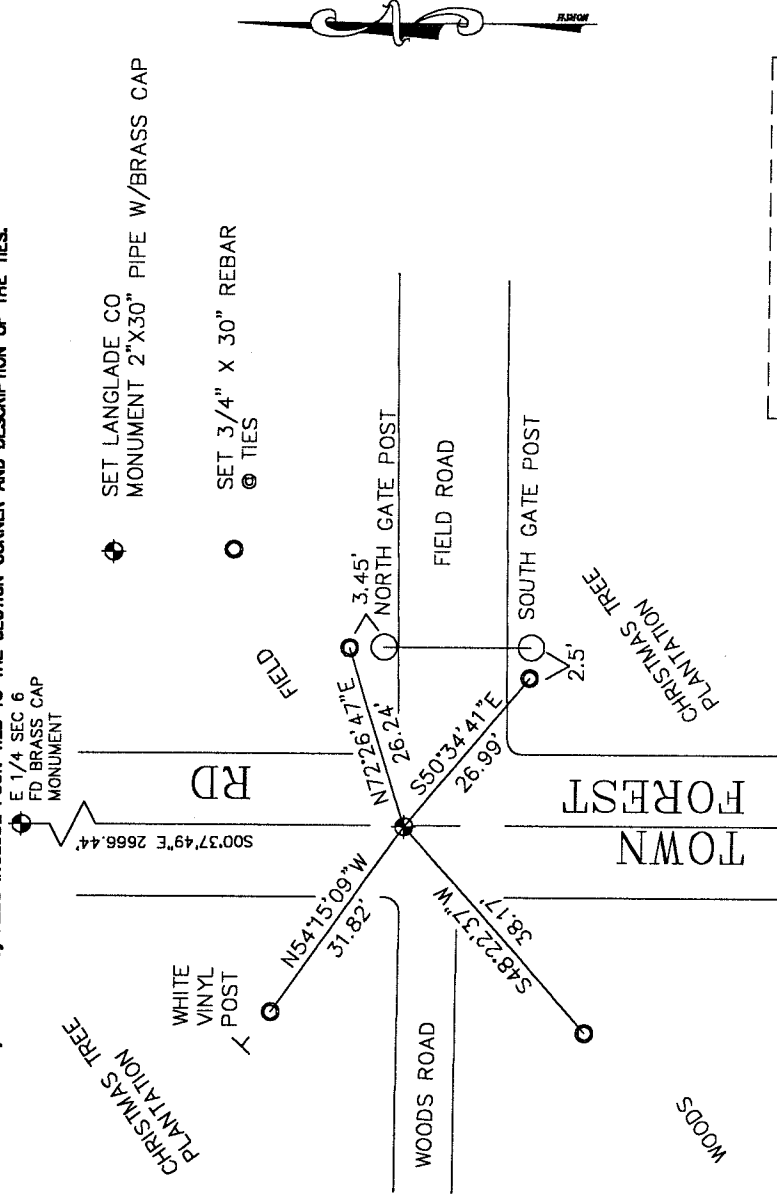


SECTION 6
 TOWNSHIP 32 NORTH, RANGE 10 EAST
 TOWN OF LANGLADE
 COUNTY, WISCONSIN

CORNER WAS: (CHECK ALL THAT APPLY)

- RESTORED THROUGH ACCEPTANCE OF AN OBLITERATED EVIDENCE LOCATION
- RESTORED THROUGH ACCEPTANCE OF A FOUND PERPETUATED LOCATION
- CONSIDERED A LOST CORNER AND REESTABLISHED THROUGH LOST CORNER PROPORTIONATE METHODS (INCLUDE A PLAN VIEW DRAWING SHOWING DISTANCES AND DIRECTIONS TO OTHER PUBLIC LAND SURVEY CORNERS USED FOR PROPORTIONING AND DETERMINING THE CORNER LOCATION)
- RESTORED OR REESTABLISHED IN A LOCATION THAT DIFFERS FROM A PREVIOUS RESTORATION OR REESTABLISHMENT (INCLUDE A PLAN VIEW DRAWING AND INDICATE WHAT WAS SET AND/OR FOUND)
- CHECK IF THERE IS ADDITIONAL INFORMATION ON BACK

DESCRIBE THE MONUMENT AND ACCESSORIES USED TO PERPETUATE THE LOCATION OF THE CORNER. (INCLUDE A PLAN VIEW DRAWING AND INDICATE WHAT WAS SET AND/OR FOUND) ALSO INCLUDE FOUR TIES TO THE SECTION CORNER AND DESCRIPTION OF THE TIES.

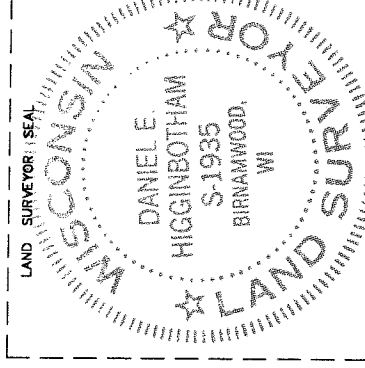


DANIEL E. HIGGINBOTHAM

(Type or print name) CERTIFY THAT THE CORNER LOCATION SHOWN ON THIS RECORD WAS DETERMINED BY ME OR UNDER MY DIRECTION AND CONTROL AND THAT THIS U.S. PUBLIC LAND SURVEY MONUMENT RECORD IS CORRECT AND COMPLETE TO THE BEST OF MY KNOWLEDGE AND BELIEF.

SIGNATURE *Daniel E. Higginbotham*

DATE 2-3-2000



E-S
 32-10

INDEX NO.