

# LANGLADE COUNTY U.S. PUBLIC LAND CORNER RESTORATION

The East Quarter corner of Section 5, T. 32 N., R. 10 E., Langlade County, WI.

3210052000

**Corner was: (check all that apply)**

- Restored through acceptance of an obliterated evidence location.
- Restored through acceptance of a found perpetuated location.
- Determined to be lost and re-established through proportionate methods.
- Show bearings and distances to PLSS corners used for proportioning, and show original distances).
- Restored/recovered/re-established in a location that differs from a previously established position.
- (Show difference in plan view below).
- Check here if additional information is shown on the reverse side of this form.

**Describe record evidence, recovered physical evidence, occupational evidence, testimonial evidence and all other evidence considered in the recovery/restoration of the corner.**

The original corner was established in 1860 by Hiram C. Fellows. Original bearing trees: fir, 6", N55°W, 25 links, and a spruce, 8", S80°E, 36 lks. In 1916, Malcolm Hutchinson found no evidence of this corner and re-established it by single proportionate methods. He set a 3" x 3' long iron pipe with cap for the corner. 02/21/02 Dave Thusty, Keith Lindner found a 3" iron pipe with cap. The corner found is on the east edge, and partially under a 14" popple. Accepted pipe found as the best evidence of the re-established corner by Hutchinson.

**Physical description of the monument set:**

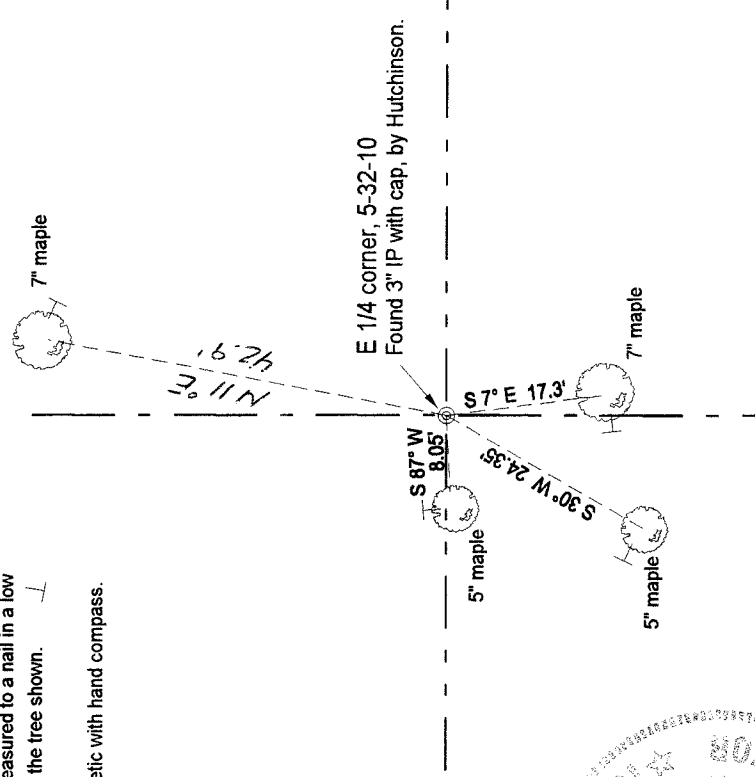
Left the existing 3" iron pipe in place. Set a white vinyl sign post 1.2' NE of the corner monument.

**Describe the accessories used to perpetuate the corner. Include a plan view drawing and accessories found/set. Describe measuring point on bearing trees. Show any topographic features that would aid in future recovery of the corner.**

**LEGEND**

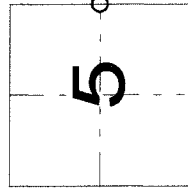
- Bearing trees are measured to a nail in a low blaze on the side of the tree shown.
- BT's painted blue.
- Tie bearings magnetic with hand compass.

Field book: FB 14-96



I, David E. Thusty, Registered Land Surveyor, as Langlade County Surveyor, certify that the corner location on this record was determined by me and that this U.S. Public Land Survey Monument Record is correct to the best of my knowledge and belief.

Index No.                      C 9            32-10           



○ = corner perpetuated  
The East Quarter  
corner of Section 5,  
T. 32 N., R. 10 E.,  
Langlade County, WI