

LANGLADE COUNTY U.S. PUBLIC LAND CORNER RESTORATION

The South Quarter corner of Section 5, T. 32 N., R. 10 E., Langlade County, WI.

Corner was: (check all that apply)

43210050020

- Restored through acceptance of an obliterated evidence location.
- Restored through acceptance of a found perpetuated location.
- Determined to be lost and re-established through proportionate methods.
 - Show bearings and distances to PLSS corners used for proportioning, and show original distances).
- Restored/recovered/re-established in a location that differs from a previously established position.
 - (Show difference in plan view below).
- Check here if additional information is shown on the reverse side of this form.

Describe record evidence, recovered physical evidence, occupational evidence, testimonial evidence and all other evidence considered in the recovery/restoration of the corner.

The original corner was established in 1860 by Hiram C. Fellows. Original bearing trees: tamarac, 8", N23°E, 13 links and a tamarac, 8", S06°W, 12 links. In 1916, Malcolm Hutchinson found no evidence of the corner and re-established it (and others) by proportionate methods. He set 3" dia. x 36" iron pipes for the corners. In 1999 & 2000, I found the other 4 monuments set by Hutchinson in 1916. I searched several times for this monument to no avail. On 2/02/05 I re-set this corner by single proportionate measurement as shown below.

Physical description of the monument set:

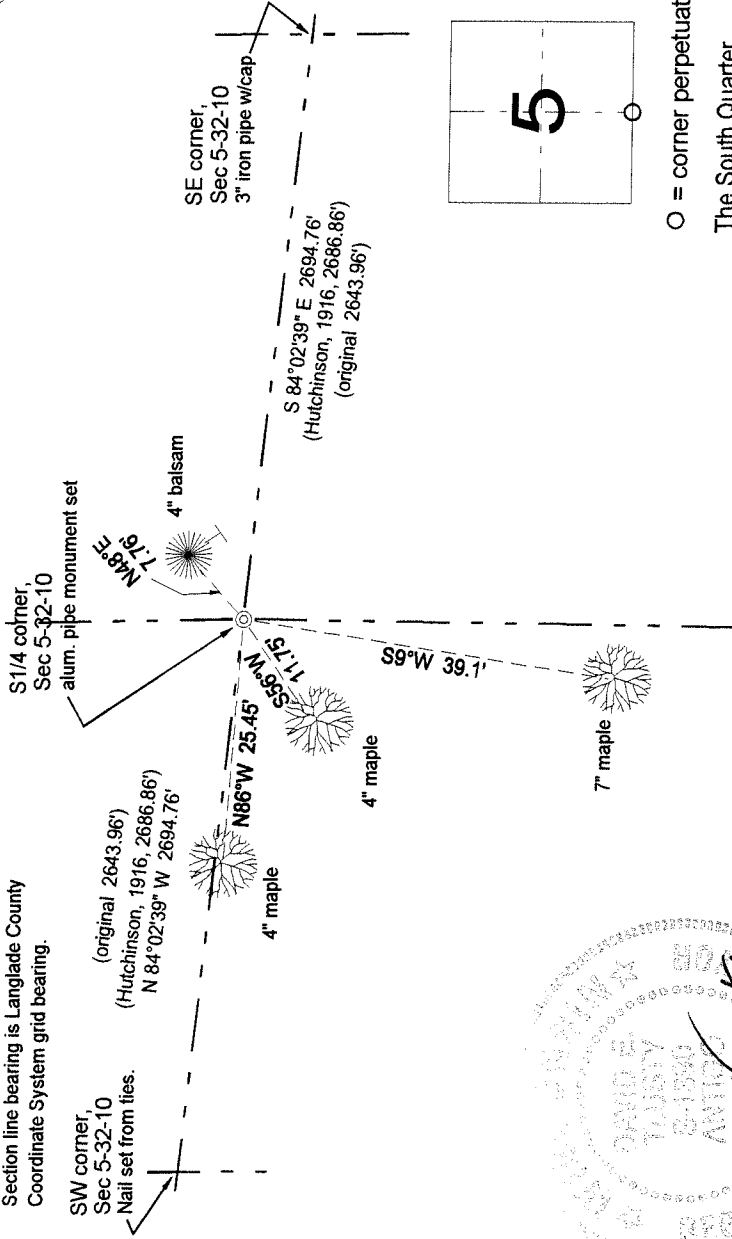
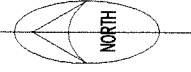
Set a 1" dia. x 60" long, aluminum pipe monument with a barbed point and a 2" aluminum cap, up 0.5' above ground. This monument has a magnet in the cap. Set a white vinyl sign post 0.6' north of the monument.

Describe the accessories used to perpetuate the corner. Include a plan view drawing and accessories found/set. Describe measuring point on bearing trees. Show any topographic features that would aid in future recovery of the corner.

LEGEND

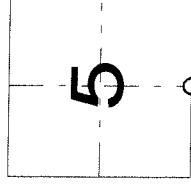
- Bearing trees are measured to a nail in a low blaze on the side of the tree shown.
- Nailed "Bearing Tree" signs to the trees, facing towards the corner.
- Tie bearings magnetic with hand compass.
- Section line bearing is Langlade County Coordinate System grid bearing.

Field book: FB18-94



Index No.

E 7 32-10



○ = corner perpetuated

The South Quarter corner of Section 5, T. 32 N., R. 10 E., Langlade County, WI

I, David E. Tlusky, Registered Land Surveyor, as Langlade County Surveyor, certify that the corner location on this record was determined by me and that this U.S. Public Land Survey Monument Record is correct to the best of my knowledge and belief.

