

LANGLADE COUNTY U.S. PUBLIC LAND CORNER RESTORATION

The South Quarter corner of Section 4, T. 32 N., R. 10 E., Langlade County, WI.

Corner was: (check all that apply)

3210040020

- Restored through acceptance of an obliterated evidence location.
- Restored through acceptance of a found perpetuated location.
- Determined to be lost and re-established through proportionate methods.
- Show bearings and distances to PLSS corners used for proportioning, and show original distances).
- Restored/recovered/re-established in a location that differs from a previously established position.
- (Show difference in plan view below).
- Check here if additional information is shown on the reverse side of this form.

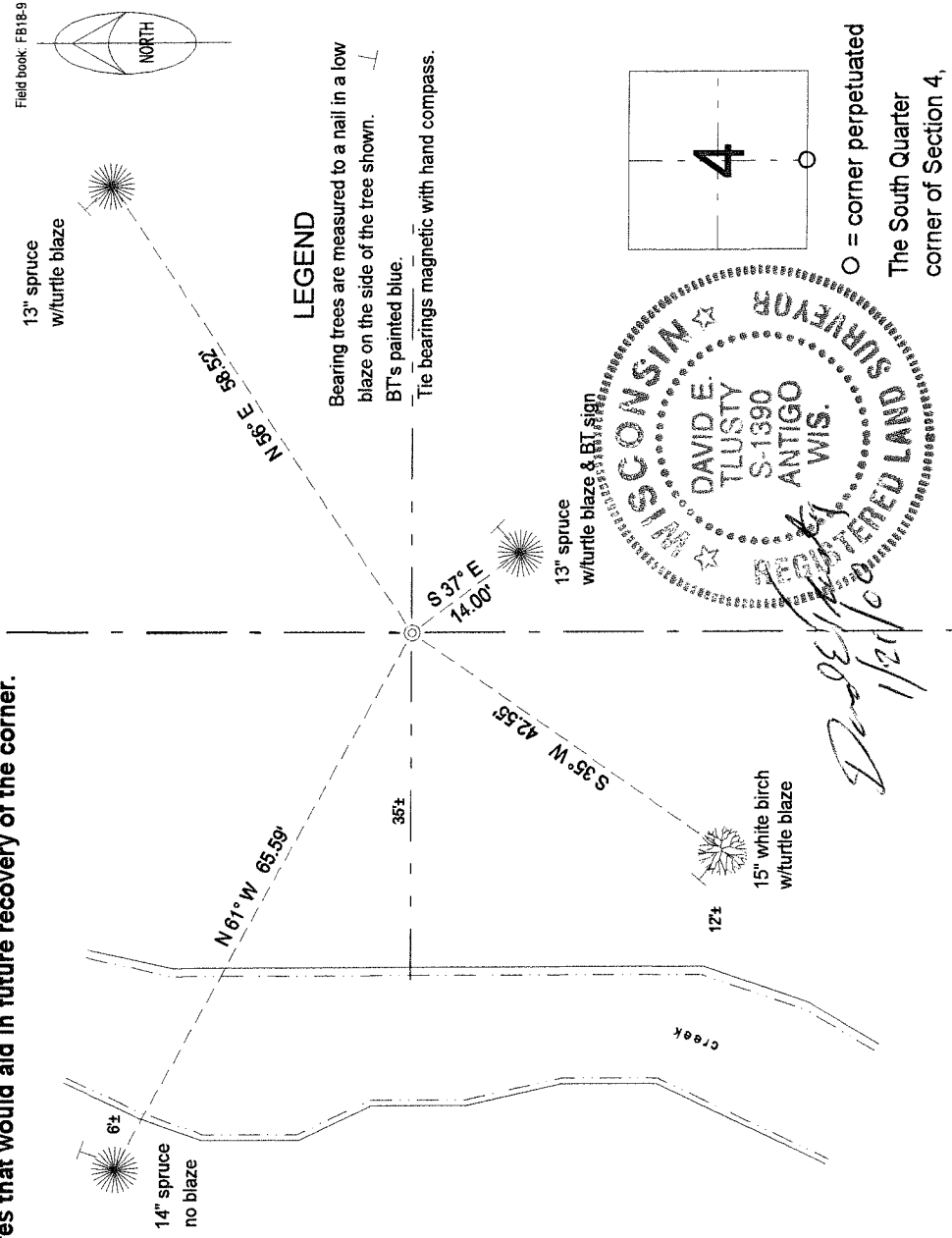
Describe record evidence, recovered physical evidence, occupational evidence, testimonial evidence and all other evidence considered in the recovery/restoration of the corner.

The original corner was established in 1860 by Hiram C. Fellows. Original bearing trees: fir, 8", S48°E, 18 links, and a fir, 10", N23°W, 19 lks. In 1916, Malcolm Hutchinson found no evidence of this corner and re-established it by single proportionate methods. He set a 3" x 3' long iron pipe with cap for the corner. 10/27/199 Dave Tlusty, Tom Arnott found a 3" dia. x 3' long iron pipe with cap on top and plate on bottom. Pipe was found frost heaved and leaning. Re-dug it straight and marked ties shown below.

Physical description of the monument set:

Re-set the existing 3" iron pipe and set white vinyl sign post on north side of it.

Describe the accessories used to perpetuate the corner. Include a plan view drawing and accessories found/set. Describe measuring point on bearing trees. Show any topographic features that would aid in future recovery of the corner.



Index No. E11 32-10

○ = corner perpetuated
 The South Quarter
 corner of Section 4,
 T. 32 N., R. 10 E.,
 Langlade County, WI

I, David E. Tlusty, Registered Land Surveyor, as Langlade County Surveyor, certify that the corner location on this record was determined by me and that this U.S. Public Land Survey Monument Record is correct to the best of my knowledge and belief.