

LANGLADE COUNTY U.S. PUBLIC LAND CORNER RESTORATION

The Southeast corner of Section 4, T. 32 N., R. 10 E., Langlade County, WI.

Corner was: (check all that apply)

3210040000

- Restored through acceptance of an obliterated evidence location.
- Restored through acceptance of a found perpetuated location.
- Determined to be lost and re-established through proportionate methods.
- Show bearings and distances to PLSS corners used for proportioning, and show original distances).
- Restored/recovered/re-established in a location that differs from a previously established position.
- (Show difference in plan view below).
- Check here if addition information is shown on the reverse side of this form.

Describe record evidence, recovered physical evidence, occupational evidence, testimonial evidence and all other evidence considered in the recovery/restoration of the corner.

The original corner was established in 1860 by Hiram C. Fellows. Original bearing trees: elm, 12", S22°W, 18 links, and a sugar, 7", N81°E, 21 lks. In 1913, Malcolm Hutchinson ran west from the S1/4 corner of Section 3, and at 40 chains, hit 22.75 links south of the corner. He set the 1/16 corner between the two, but didn't describe either. 10/99 D. Tlusty, Tom Arnott found 3" iron pipe with cap lying on the ground on the south side of an east-west trail. Couldn't tell where pipe had been so we backtracked and found a rusted off well point for the 1/16 corner to the East. We then doubled over the line from the S1/4 corner of Section 3 through the found 1/16th corner well point and re-set the 3" iron pipe with cap. Corner falls in the center of east-west trail as Jack Rusch remembers seeing the corner at one time.

Physical description of the monument set:

Re-set the 3" x 36" iron pipe found with steel cap. ~~ument up 0.2'~~ with 3-1/4" brass cap stamped *D.T.*
Set a white vinyl sign post within 0.5' of the corner monument.

Describe the accessories used to perpetuate the corner. Include a plan view drawing and accessories found/set. Describe measuring point on bearing trees. Show any topographic features that would aid in future recovery of the corner.

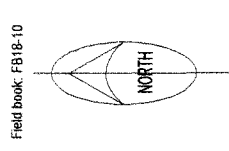
LEGEND

Bearing trees are measured to a nail in a low blaze on the side of the tree shown.

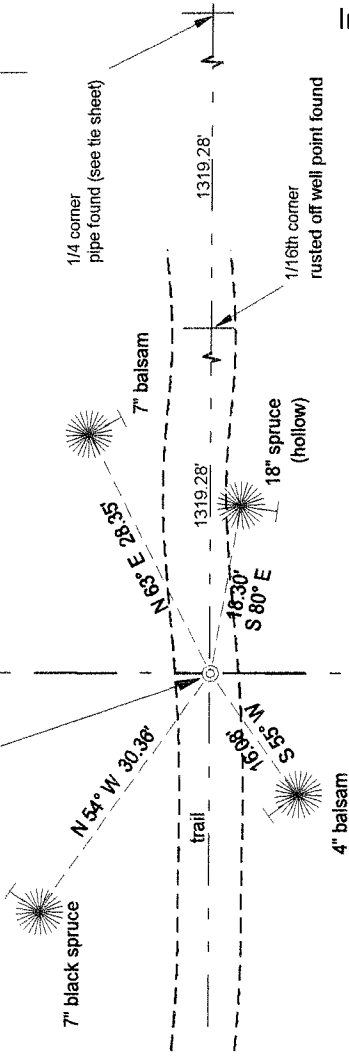
BT's painted blue.

Tie bearings magnetic with hand compass.

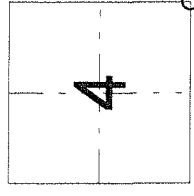
SE corner, 4-32-10
3" iron pipe



Field book: FB18-10

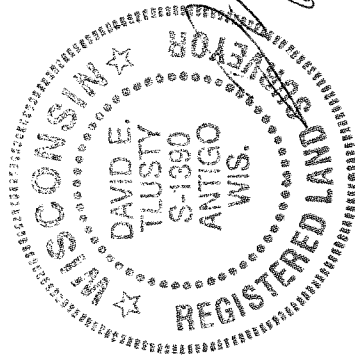


Index No. E13 V48 32-10



○ = corner perpetuated

The Southeast corner of Section 4, T. 32 N., R. 10 E., Langlade County, WI



I, David E. Tlusty, Registered Land Surveyor, as Langlade County Surveyor, certify that the corner location on this record was determined by me and that this U.S. Public Land Survey Monument Record is correct to the best of my knowledge and belief.