

LANGLADE COUNTY U.S. PUBLIC LAND CORNER RESTORATION

The South Quarter corner of Section 3, T. 32 N., R. 10 E., Langlade County, WI.

Corner was: (check all that apply)

- Restored through acceptance of an obliterated evidence location.
- Restored through acceptance of a found perpetuated location.
- Determined to be lost and re-established through proportionate methods.
- Show bearings and distances to PLSS corners used for proportioning, and show original distances).
- Restored/recovered/re-established in a location that differs from a previously established position.
- (Show difference in plan view below).
- Check here if additional information is shown on the reverse side of this form.

3210030020

Describe record evidence, recovered physical evidence, occupational evidence, testimonial evidence and all other evidence considered in the recovery/restoration of the corner.

The original corner was established in 1860 by Hiram C. Fellows. Original bearing trees: elm, 12", S22°W, 18 links, and a sugar, 7", N81°E, 21 lks. In 1908, E.S. Brooks, ran (5299.14') the N-S 1/4 line of Section 10 as part of a road survey through Sections 16 & 10. In the road survey, he mentioned setting gas pipes for some of the corners but didn't mention setting one here or marking any trees.

In 1913, Hutchinson surveyed the line between Sections 3 & 10 and found a gas pipe for this corner and one stump of Orig. BT plainly marked and witness trees by Brooks.

09/99 Dave Tlusty, Tom Arnott using GPS to check Brooks' distance from the S1/4 corner of Section 10, we found a 1 1/2" iron pipe, 1.2' below ground. This pipe is the same size as two other recovered corner pipe in this area that are known to have been set by Brooks. The pipe fits very well with a recovered 1/16th corner and section corner to the East.


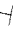
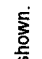

I accepted the pipe found as a pipe set by Brooks and verified by Hutchinson as being the original corner location.

Physical description of the monument set:

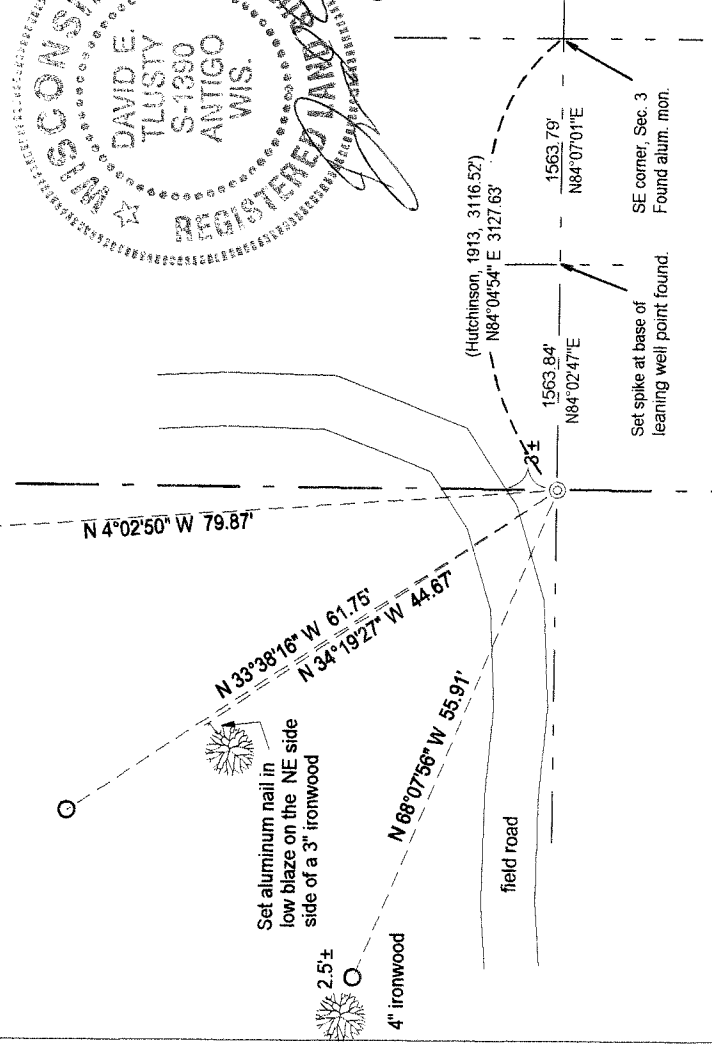
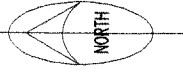
I topped the existing pipe with a 4" dia. x 16" iron pipe with brass cap set flush.
Set a white vinyl sign post 0.5' east of the corner monument.

Describe the accessories used to perpetuate the corner. Include a plan view drawing and accessories found/set. Describe measuring point on bearing trees. Show any topographic features that would aid in future recovery of the corner.

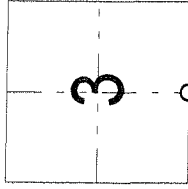
LEGEND

-  Bearing trees are measured to a nail in a low blaze on the side of the tree shown.
-  BT's painted blue.
-  Tie bearings referenced to section line shown.
-  \bigcirc 3/4" x 30" rebar set

Field book: FB18-15



Index No. E15 32-10



\bigcirc = corner perpetuated
The South Quarter
corner of Section 3,
T. 32 N., R. 10 E.,
Langlade County, WI

I, David E. Tlusty, Registered Land Surveyor, as Langlade County Surveyor, certify that the corner location on this record was determined by me and that this U.S. Public Land Survey Monument Record is correct to the best of my knowledge and belief.