

LANGLADE COUNTY U.S. PUBLIC LAND CORNER RESTORATION

The South Meander corner between Sections 1 & 2, T. 32 N., R. 10 E., Langlade County, WI.

Corner was: (check all that apply)

3210023500

- Restored through acceptance of an obliterated evidence location.
- Restored through acceptance of a found perpetuated location.
- Determined to be lost and re-established through proportionate methods.
- Show bearings and distances to PLSS corners used for proportioning, and show original distances).
- Restored/recovered/re-established in a location that differs from a previously established position.
- (Show difference in plan view below).
- Check here if additional information is shown on the reverse side of this form.

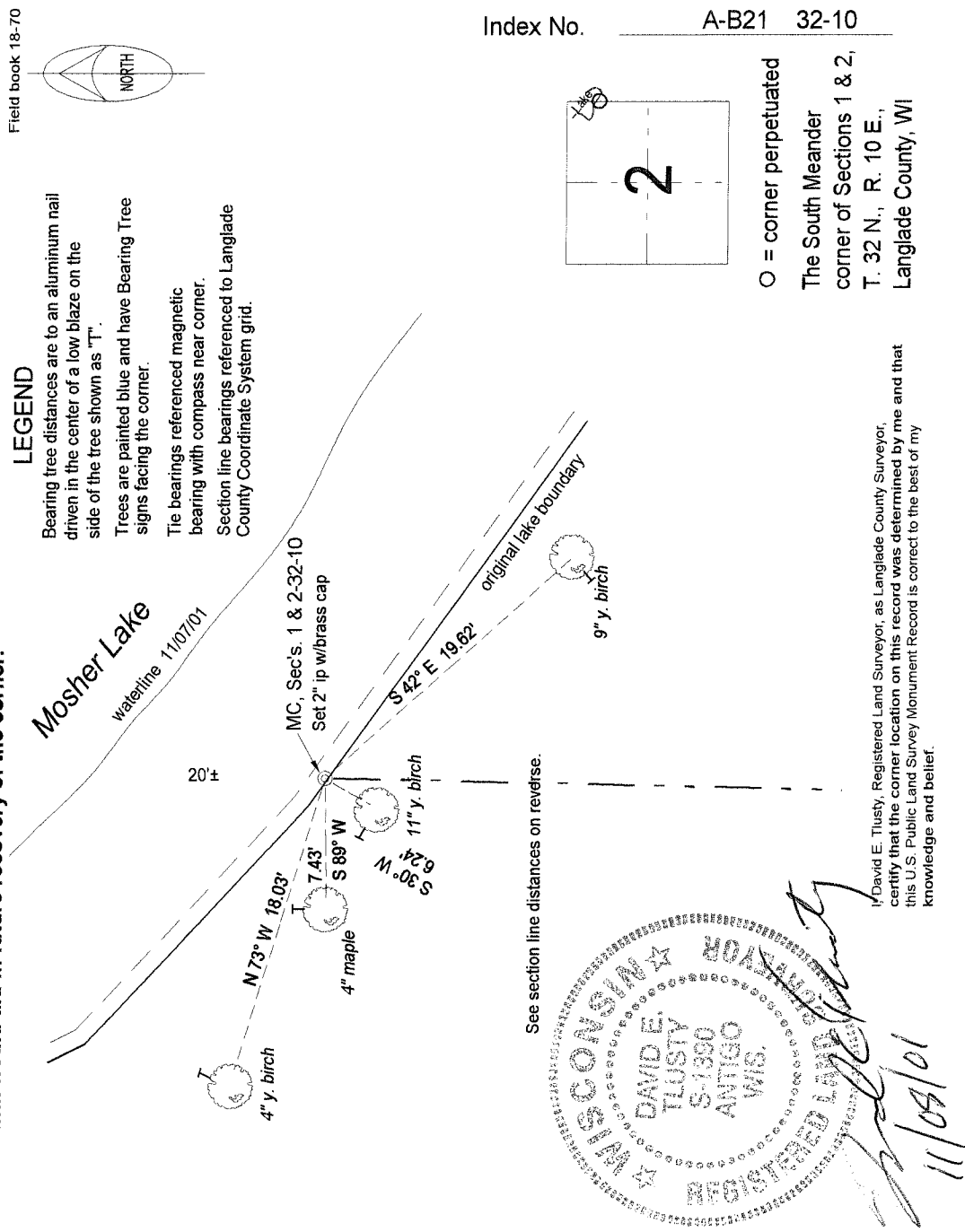
Describe record evidence, recovered physical evidence, occupational evidence, testimonial evidence and all other evidence considered in the recovery/restoration of the corner.

The original corner was established in 1860 by Hiram C. Fellows. Original bearing trees: birch, 6", S04°E, 12 links and a birch, 8", S71°W, 22 links. In 1908, B. F. Dorr said "At MC, SE tree (stub) standing, SW rotten wood. Marked 2 new BT's: hemlock, 13" S 63.5° W, 46.25 links (30.5') and a hemlock, 18", S 24° E, 22.25 links (14.7)". 11/07/01 D. Tlusty, D. Williams reset this MC by extending a line from the Quarter corner between Sec. 1 & Sec. 2, north through the recovered N1/16th corner and using Dorrs distance as basis for prorating. This restored position falls on the old, original shoreline of Mosher Lake.

Physical description of the monument set:

Set a 2" x 30" flared bottom, galvanized iron pipe with 3 1/4" brass cap, top of which is 0.3' above ground.
Set a white vinyl sign post, 0.5' north of the corner monument.

Describe the accessories used to perpetuate the corner. Include a plan view drawing and accessories found/set. Describe measuring point on bearing trees. Show any topographic features that would aid in future recovery of the corner.

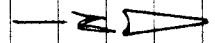


772

DIST'S ON LINE PER.

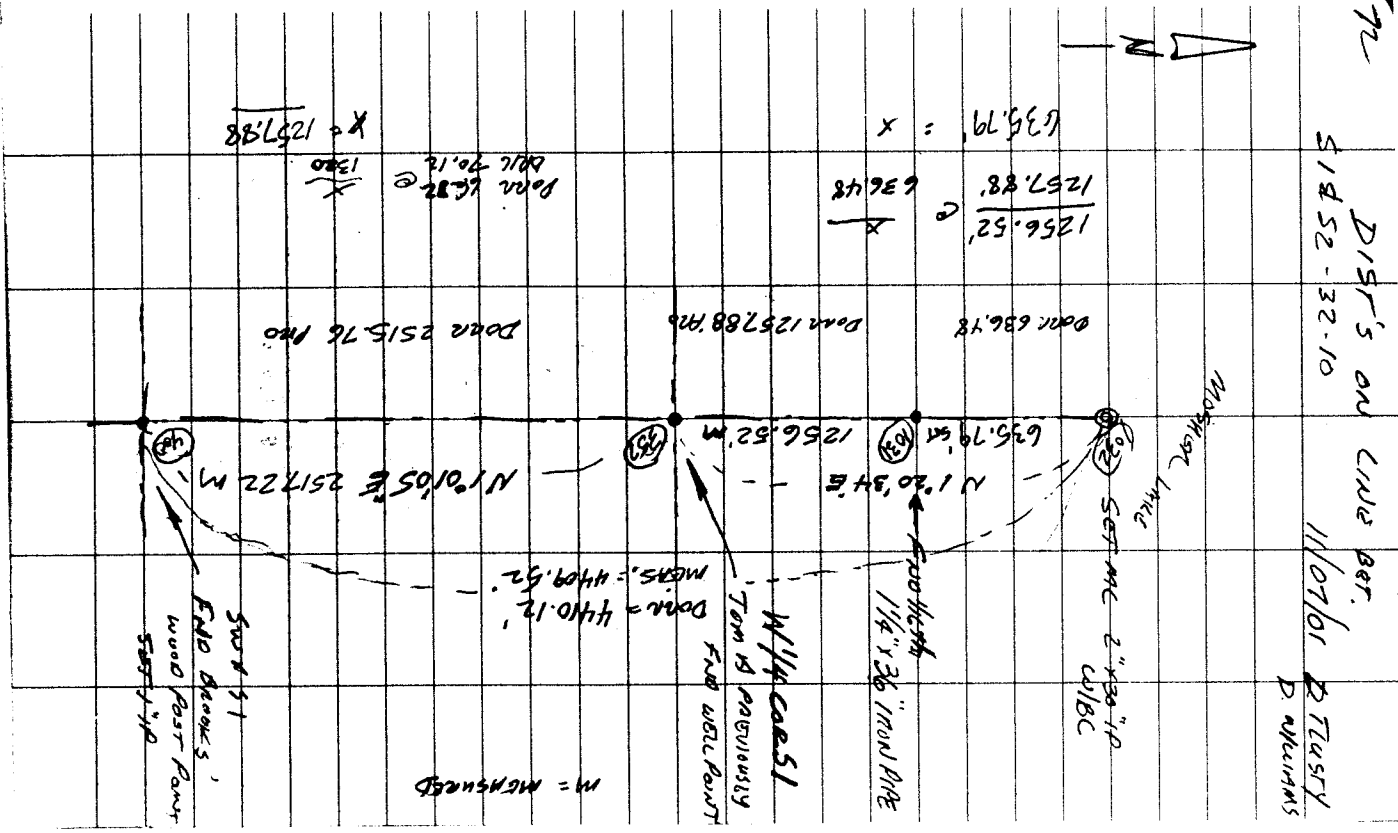
11/07/01

BTASTY
D. MOUNTAIN



$$\begin{array}{r}
 1256.52 \\
 \times 636.48 \\
 \hline
 635.79 = x
 \end{array}$$

$$\begin{array}{r}
 1257.88 \\
 \times 1380 \\
 \hline
 x = 1257.98
 \end{array}$$



M = MEASUREMENT