

# LANGLADE COUNTY U.S. PUBLIC LAND CORNER RESTORATION ADDENDUM

The East 1/4 corner of Section 2, T. 32 N., R. 10 E., Langlade County, WI.

Corner was: (check all that apply)

- Restored through acceptance of an obliterated evidence location.
- Restored through acceptance of a found perpetuated location.
- Determined to be lost and re-established through proportionate methods.
- Show bearings and distances to PLSS corners used for proportioning, and show original distances).
- Restored/recovered/re-established in a location that differs from a previously established position.
- Check here if additional information is shown on the reverse side of this form.

4321002 2000 2010

**Describe record evidence, recovered physical evidence, occupational evidence, testimonial evidence and all other evidence considered in the recovery/restoration of the corner.**

The corner was monumented and tied in 1996 by Thomas R. Arnott, RLS 887.

Knowing that the road will soon receive a pavement patch, including over this corner, on May 10, 2010, I visited the site and found the corner monument by Arnott as described and visible at the road surface. I found 3 of the 4 Arnott ties, set one new tie and measured to all as shown below. Measurements made by occupying the corner monument and measuring to a bipod supported prism pole on each tie monument. Held Arnott's bearing to the NW rebar as a basis for the rest of the bearings. For the mowing convenience of the owner to the south, I moved the white plastic post that Arnott set on the south side of the road, to the rebar on the north side of the road.

**Physical description of the monument set:**

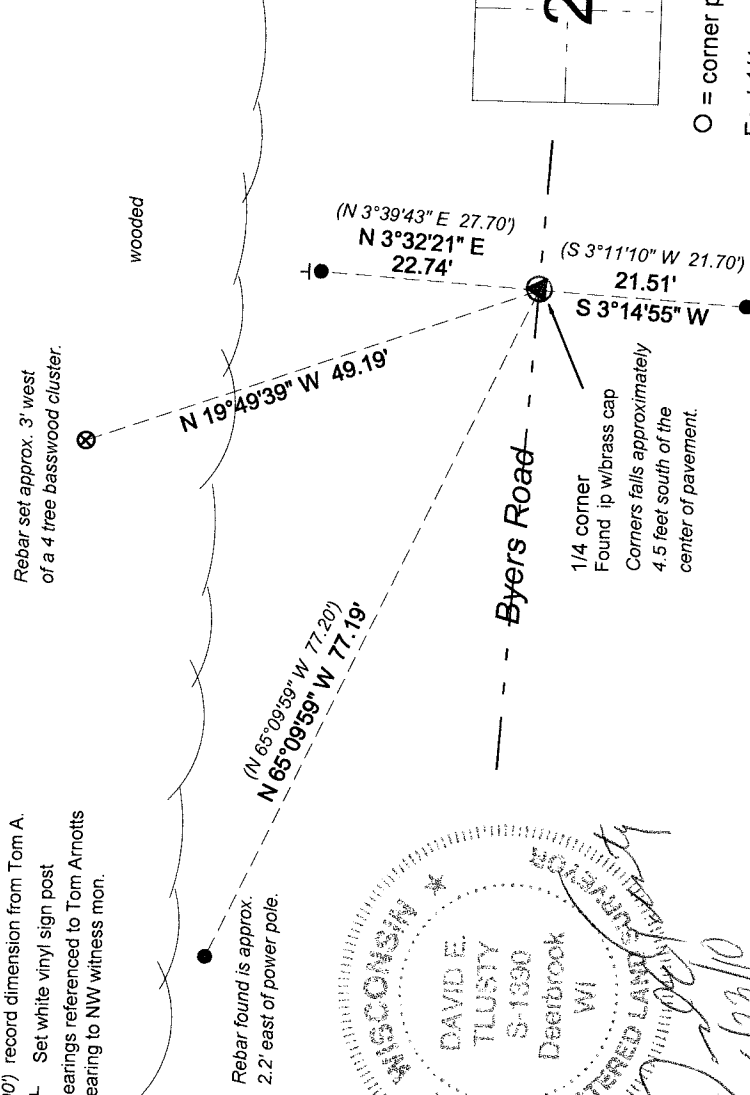
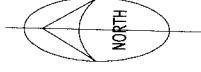
I left the existing brass capped monument in place.

**Describe the accessories used to perpetuate the corner. Include a plan view drawing and accessories found/set. Describe measuring point on bearing trees. Show any topographic features that would aid in future recovery of the corner.**

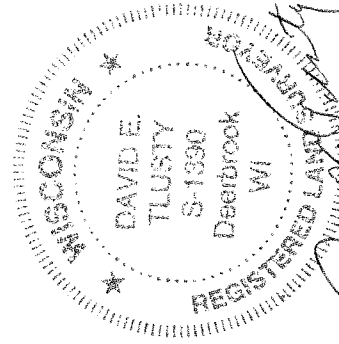
**LEGEND**

- ⊗ 3/4" x 30" rebar set
- 3/4" rebar found
- △ small nail set, n edge pav't.
- (0.00) record dimension from Tom A.
- └ Set white vinyl sign post
- Bearings referenced to Tom Arnott's bearing to NW witness mon.

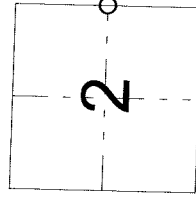
Field book 18-40



Rebar found is approx.  
2.2' east of power pole.



Index No. C21 32-10



○ = corner perpetuated  
East 1/4 corner  
of Section 2,  
T. 32 N., R. 10 E.,  
Langlade County, WI

I, David E. Tlusty, Registered Land Surveyor, as Langlade County Surveyor, certify that the corner location on this record was determined by me and that this U.S. Public Land Survey Monument Record is correct to the best of my knowledge and belief.