

# U.S. PUBLIC LAND SURVEY MONUMENT RECORD

(Prepared and as required by S. A-E 7.08 WI Administrative Code)

The East 1/4 corner of Section 2, T. 32 N., R. 10 E., Langlade County, WI

Corner was: (check all that apply)

- Restored through acceptance of an obliterated evidence location.
- Restored through acceptance of a found perpetuated location.
- Determined to be lost and re-established through proportionate methods.  
(Show bearings and distances to PLSS corners used for proportionating.)
- Restored/recovered/reestablished in a location that differs from a previously established position. (Show difference in plan view below.)
- Check here if additional information is shown on the reverse side of this form.

Describe record evidence, recovered physical evidence, occupational evidence, testimonial evidence and all other evidence considered in the recovery/restoration of the corner.

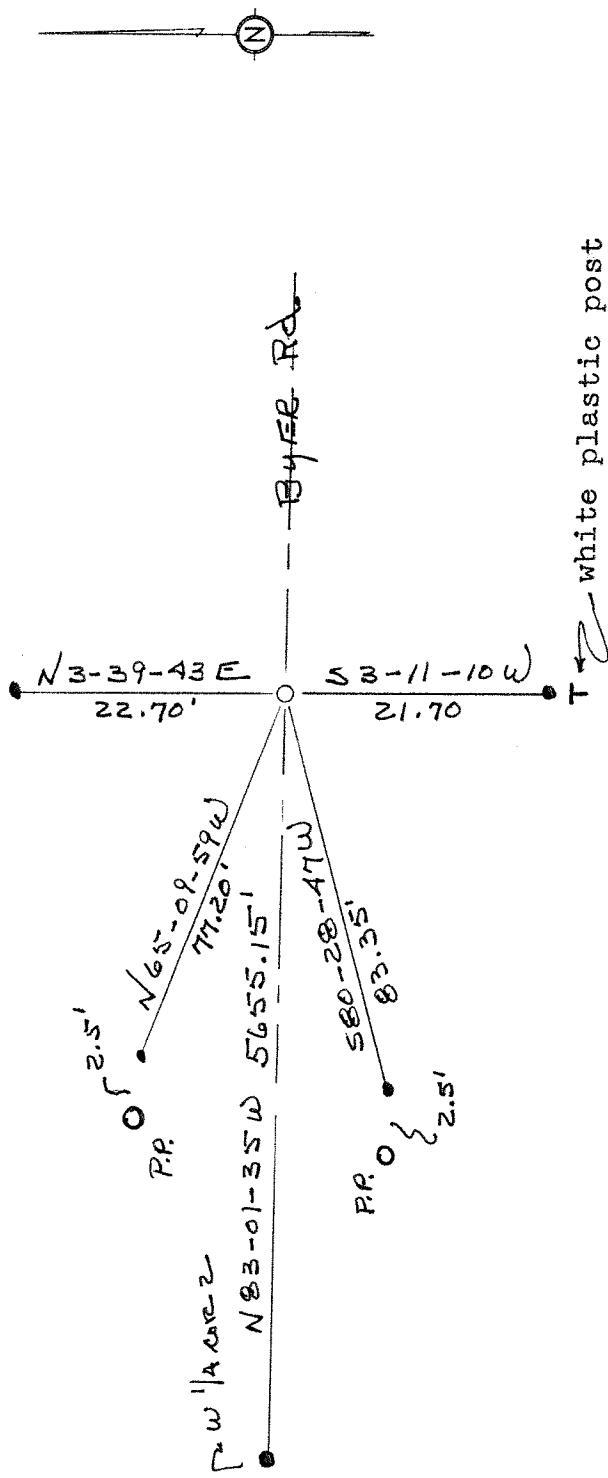
Found  $1\frac{1}{2}$  inch well point in the center of Byers Road and a fence line leading south and north from Byers Road. I dug out the well point and set a 2 inch iron pipe with a 4 inch brass cap in its place. The monument is 6 inches below the road grade.

### Physical description of the monument set:

I set a 2 inch iron pipe with a 4 inch brass cap 6 inches below road grade.

Describe the accessories used to perpetuate the location of the corner. Include a plan view drawing and indicate accessories found/set. Describe measuring point on bearing trees. Show any topographic features that would aid in future recovery of the corner.

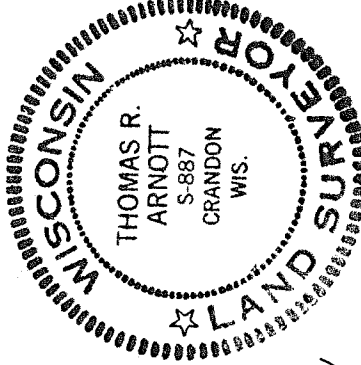
All 4 ties are made to 3/4 inch rebar with red plastic caps.



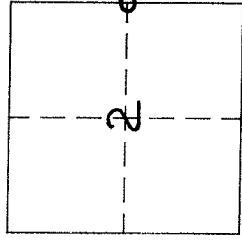
The E 1/4 corner of Section 2

SURVEYORS SEAL

T. 32 N., R. 10 E.  
Langlade County, WI



INDEX No. C21



○ = Location of corner

I, Thomas R. Arnott, certify that the corner location shown on this record was determined by me or under my direction and control and that this U.S. Public Land Survey Monument Record is correct and complete to the best of my knowledge and belief.

Thomas R. Arnott 31 Oct 1996  
Signature Date