

# LANGLADE COUNTY U.S. PUBLIC LAND CORNER RESTORATION

The South quarter corner of Section 2, T. 32 N., R. 10 E., Langlade County, WI.

**Corner was: (check all that apply)**

43210020020

- Restored through acceptance of an obliterated evidence location.
- Restored through acceptance of a found perpetuated location.
- Determined to be lost and re-established through proportionate methods.
- Show bearings and distances to PLSS corners used for proportioning, and show original distances).
- Restored/recovered/re-established in a location that differs from a previously established position.
- (Show difference in plan view below).
- Check here if additional information is shown on the reverse side of this form.

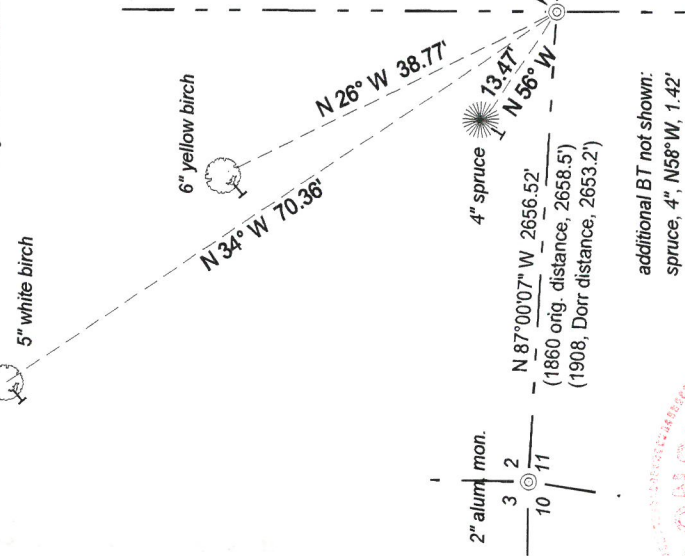
**Describe record evidence, recovered physical evidence, occupational evidence, testimonial evidence and all other evidence considered in the recovery/restoration of the corner.**

The original corner was established in 1860 by Hiram C. Fellows. Original bearing trees: cedar, 12", N67°W, 8 links and a cedar, 10", S30°W, 6 links. In 1908, Dorr ran the south line of Section 2, could not find this quarter corner and re-est. it by proportionate methods. He marked 2 new BT's: spruce, 12", S75-1/2°W, 21 links and a cedar, 12", S28°E, 32 links. In 1987, surveyor Glen Barker, traversed the south line of Section 2 and searched for this corner and the SE corner of Section 2. He found neither. 10/11/05 D. Tlusty. I found the SE corner of Section 2 in 2001, now, in 2005, I searched for this quarter corner at a computed proportionate position. I could find no evidence of Dorr's BT's. I re-established the corner position by single proportionate measurement between adjoining corners and used Barkers traverse points to set a monument at the computed position.

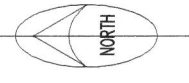
**Physical description of the monument set:**

To mark the corner, I set a Berntsen 1" dia., x 60" long, aluminum pipe monument with 2" aluminum cap with magnet, top of which is 0.4" above ground in spruce and cedar swamp. I set a Berntsen Deep-1 magnet (1" x 1" x 2 1/2" plastic case) 0.7' down on the south edge of the aluminum monument. I set a white vinyl sign post, 0.5' north of the monument.

**Describe the accessories used to perpetuate the corner. Include a plan view drawing and accessories found/set. Describe measuring point on bearing trees. Show any topographic features that would aid in future recovery of the corner.**



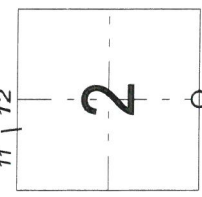
Field book 18-98



**LEGEND**

- Bearing tree distances are to an aluminum nail driven in the center of a low blaze on the side of the tree shown as "T".
- Trees have a Bearing Tree sign facing the corner.
- Tie bearings are magnetic with a hand compass.
- Section line bearings referenced to Langlade County Coordinate System grid.

pipe set in place of wood post point fnd. in 2001.



The corner falls approx. 100' south of the old Kempster trail, an old logging rr grade.



I, David E. Tlusty, Registered Land Surveyor, as Langlade County Surveyor, certify that the corner location on this record was determined by me and that this U.S. Public Land Survey Monument Record is correct to the best of my knowledge and belief.

O = corner perpetuated  
The South quarter corner of Section 2, T. 32 N., R. 10 E., Langlade County, WI

Index No. E19 32-10





5/4 CORNER SEC 2-32-10 10/11/05 D.T.  
PICTURE WAS TAKEN APPROXIMATELY 10' NW OF CORNER.