

LANGLADE COUNTY U.S. PUBLIC LAND CORNER RESTORATION

The Southeast corner of Section 2, T. 32 N., R. 10 E., Langlade County, WI.

Corner was: (check all that apply)

- Restored through acceptance of an obliterated evidence location.
- Restored through acceptance of a found perpetuated location.
- Determined to be lost and re-established through proportionate methods.
- Show bearings and distances to PLSS corners used for proportioning, and show original distances).
- Restored/recovered/re-established in a location that differs from a previously established position.
- (Show difference in plan view below).
- Check here if additional information is shown on the reverse side of this form.

3210020000

Describe record evidence, recovered physical evidence, occupational evidence, testimonial evidence and all other evidence considered in the recovery/restoration of the corner.

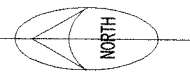
The original corner was established in 1859 by Hiram C. Fellows. Original bearing trees: tamarac, 10", S44°W, 10 links; and a cedar, 10", N71°E, 14 links. In 1908, B.F. Dorr (FB96-131) said "NE tree lying down, other gone". In 1914, in a survey in Section 12, Hutchinson said "one orig BT marked, other down. Stake set by Brooks (new) cedar, 10, S 53.5°W, 13.75 (9.08)". Hutch then set W1/4 cor. of S12 at 2672.5' from here. 10/18/01 D. Tlusty, D. Williams computed search area by extending line from recovered SW corner of S12 thru the W1/4 corner of S12 and by using Hutch's distance from the W1/4 corner. Found Hutch's cedar BT (now solid stump) and 9" long by 3" - 4" dia. point of cedar post. SW orig tam. completely gone, NE cedar is rotten stump. Accepted the point of the wood post as the best evidence of the original corner location.

Physical description of the monument set:

In place of the wood post point found, I set a new, 1" (ID) x 72" long black iron pipe, filled with mortar mix and topped with a 2" aluminum cap stamped to identify corner, top of which is 0.8' above ground. Stabilized monument with several 2" x 24" ash sticks driven flush with water in swamp. Set white vinyl sign post, 0.5' north.

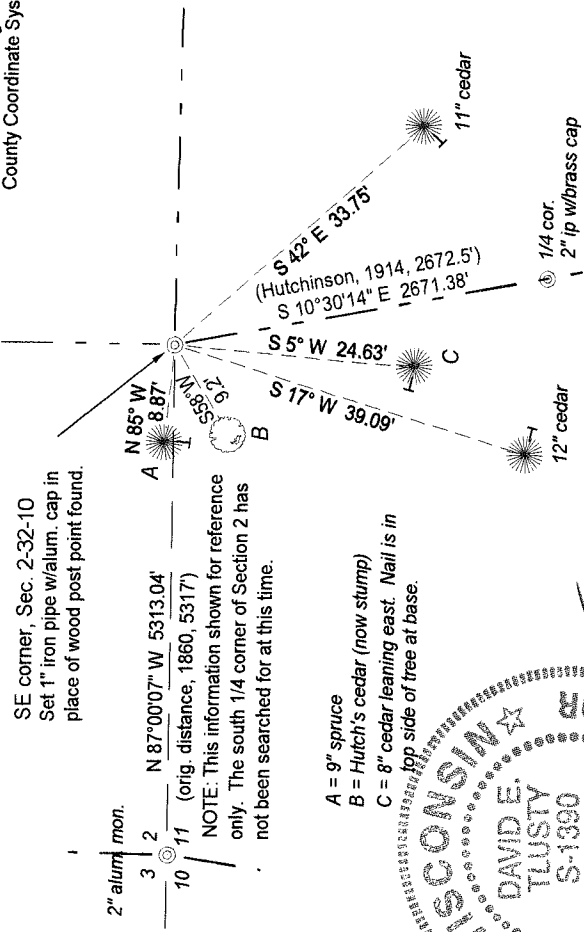
Describe the accessories used to perpetuate the corner. Include a plan view drawing and accessories found/set. Describe measuring point on bearing trees. Show any topographic features that would aid in future recovery of the corner.

Field book 18-63

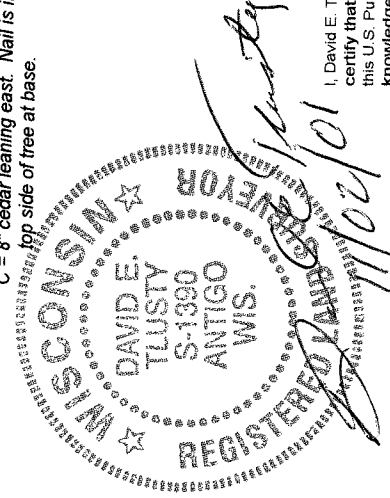


LEGEND

- Bearing tree distances are to an aluminum nail driven in the center of a low blaze on the side of the tree shown as "T".
- Trees are painted blue and have Bearing Tree signs facing the corner.
- Tie bearings referenced magnetic bearing with compass near corner.
- Section line bearings referenced to Langlade County Coordinate System grid.

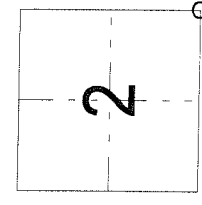


- A = 9" spruce
- B = Hutch's cedar (now stump)
- C = 8" cedar leaning east. Nail is in top side of tree at base.



I, David E. Tlusty, Registered Land Surveyor, as Langlade County Surveyor, certify that the corner location on this record was determined by me and that this U.S. Public Land Survey Monument Record is correct to the best of my knowledge and belief.

Index No. E21 32-10



○ = corner perpetuated
The Southeast corner of Section 2, T. 32 N., R. 10 E., Langlade County, WI