

# U.S. PUBLIC LAND SURVEY MONUMENT RECORD

(Prepared and as required by S. A-E 7.08 Wt Administrative Code)

4 3210010000

Corner was: (check all that apply)

- Restored through acceptance of an obliterated evidence location
- Restored through acceptance of a found perpetuated location
- Determined to be lost and reestablished through proportionate methods.  
(Show bearings and distances to PLSS corners used for proportioning)
- Restored/recovered/reestablished in a location that differs from a previously established position. (Show difference in plan view below.)
- Check here if additional information is shown on the reverse side of this form

Describe record evidence, recovered physical evidence, occupational evidence, testimonial evidence and all other evidence considered in the recovery/restoration of corner.

1859 - Original Corner established by Hiram C. Fellows  
 Original BT's : hemlock, 12", S5°W, 17 lks.  
 Original BT's : elm, 10", N68°W, 26 lks.  
 Original BT's : birch, 20", N69°E, 28 lks.  
 Original BT's : hemlock, 20", S76°E, 48 lks.

( Also see corner history on reverse side of page)

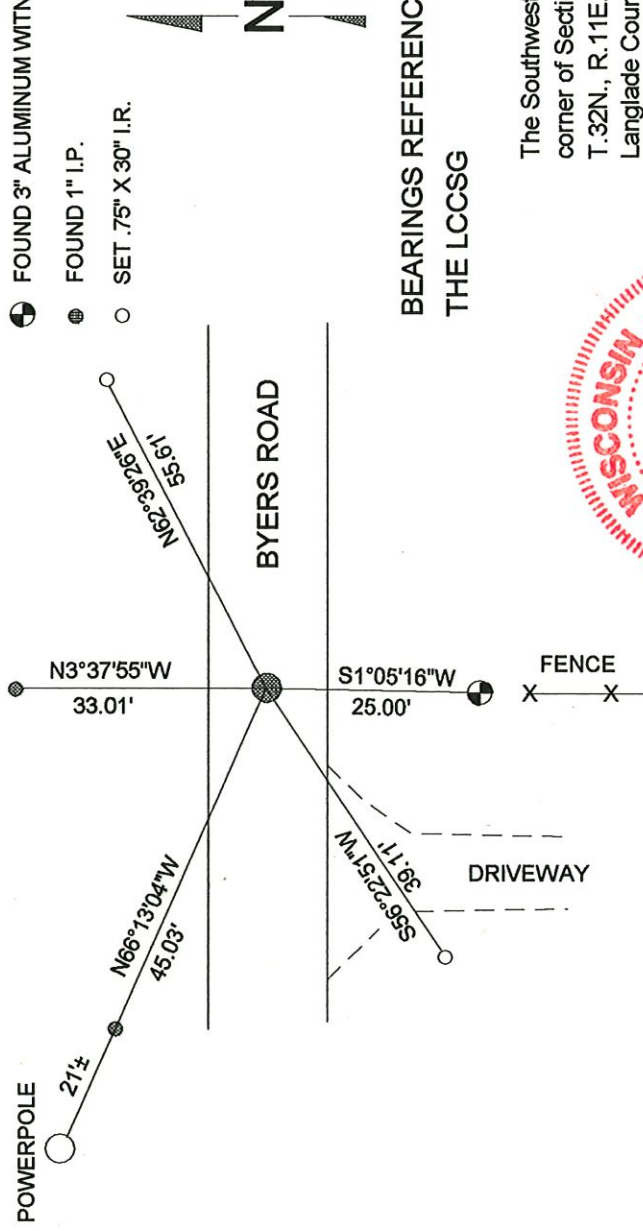
Physical description of the monument set:

Found 1.3" Iron Pipe .5 feet below road surface and two kelly ties.  
 Retied and accepted as best possible evidence of corner location.

Describe the accessories used to perpetuate the location of the corner. Include a plan view drawing and indicate accessories found/set. Describe measuring point on bearing trees. Show any topographic features that would aid in future recovery of the corner.

### LEGEND

- FOUND 1.3" I.P.
- FOUND 3" ALUMINUM WITNESS MON.
- FOUND 1" I.P.
- SET .75" X 30" I.R.



BEARINGS REFERENCED TO  
THE LCCSSG

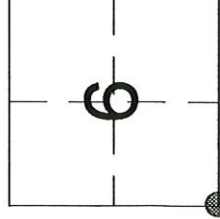


I, Dean A. Williams RLS 2468, certify that the corner location shown on this record was determined by me or under my direction and control and that this U.S. Public Land Survey Record is correct and complete to the best of my knowledge and belief.

*Dean Williams* 8/16/04  
 Signature Date

INDEX NO. E 1 32-11

The Southwest corner of Section 6  
 T.32N., R.11E.,  
 Langlade County, WI



= Location of corner

## History of SW Section Corner 6-32-11, Town of Neva

1901 - B.F.Dorr, measured 42.10 chains North to West 1/4 Corner.

1902 - Webley, measured 46.60 chains East to South 1/4 Corner.

1920's - Hutchinson, set 1/2" iron bar for Corner.

1988 - W.F. Kelly, found 1/2" iron bar, set 3" aluminum witness monument and two BT's and one bearing object; 1" i.p. in line with power pole.

2004 - Dean A. Williams found 1.3" i.p., accepted for corner location. Even though an iron bar was called for, accepted the 1.3" i.p. because

of witness monument distance was the same as Kelly's.

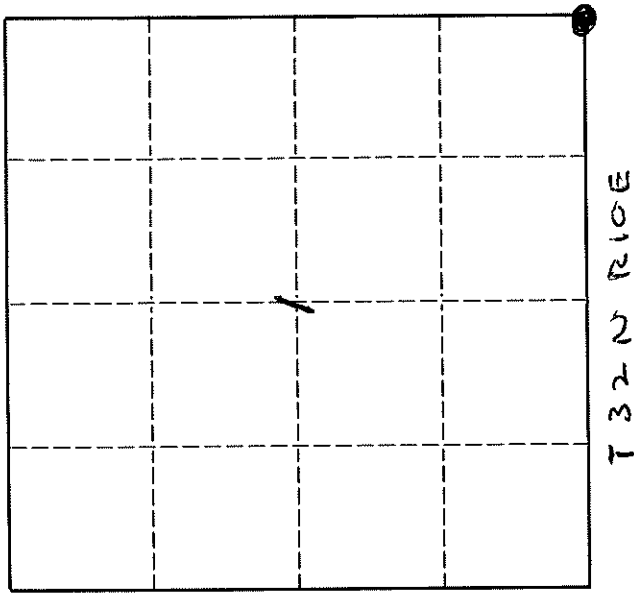
# U. S. PUBLIC LAND SURVEY MONUMENT RECORD

**INSTRUCTIONS:**

This record shall show the location of the corner and shall include all of the following nine elements (a through i).

- (a) Identify the corner by reference to the U.S. public land survey system.
- O = Corner monument restored.

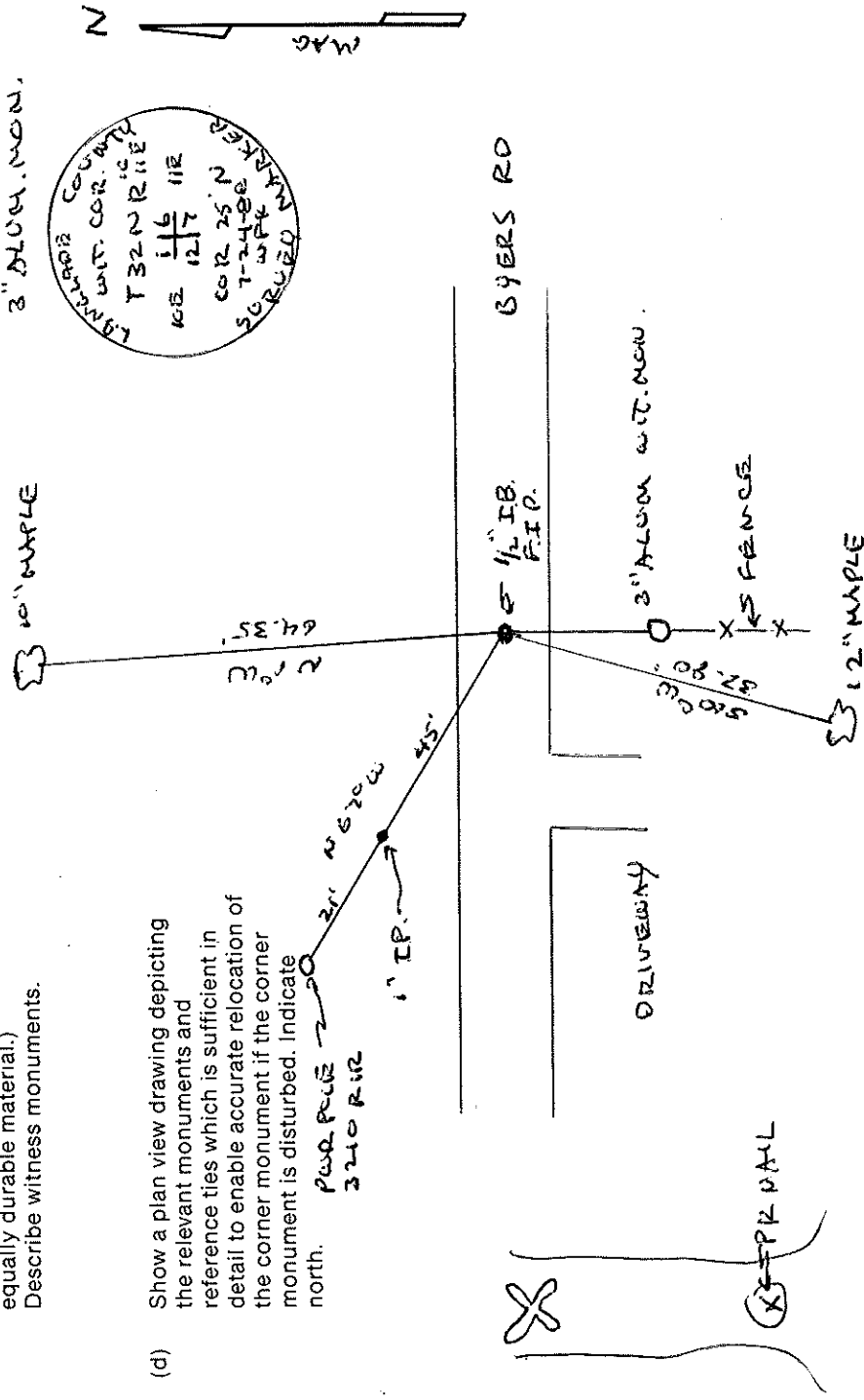
**ORIGINAL CORNER ESTABLISHED BY H.C. FELLOWS IN MAY 1859**



- (b) Describe any record evidence, monument evidence, occupational evidence, testimonial evidence or any other material evidence you considered, and whether the monument was found or placed.

**LOCATED 1/2" IRON BAR SET BY M. HUSTONINSON IN 1925 SET WITNESS MONUMENT**

- (c) In the plan view drawing below, provide reference ties to at least 4 witness monuments, or, if the location is within a municipality, to at least 2 witness monuments. (Witness monuments shall be made of concrete, natural stone, iron or other equally durable material.) Describe witness monuments.



- (d) Show a plan view drawing depicting the relevant monuments and reference ties which is sufficient in detail to enable accurate relocation of the corner monument if the corner monument is disturbed. Indicate north.

Describe any material discrepancy between the location of the corner as restored or reestablished and the location of that corner as previously restored or reestablished by distance and direction. Show the discrepancy on the plan view drawing under (d), above. Show the distances between the corner as previously restored or reestablished and (1) the corner as restored or reestablished, and (2) to at least 2 of the witness monuments shown on the drawing in (d), above.

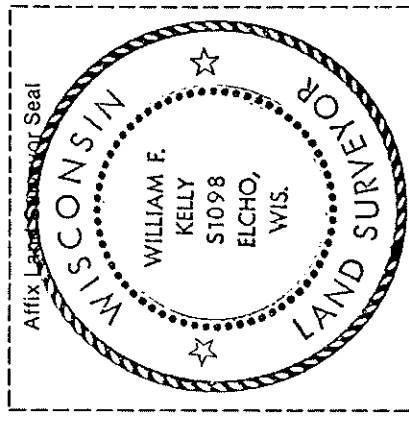
None

(f) Was the corner restored through acceptance of (1) an obliterated evidence location, or, (2) a found perpetuated location.?

- 2 -

(g & h) Was the corner reestablished through lost corner proportionate methods? If so, show the method, including the directions and distances to other public land survey corners used as evidence or used for proportioning in determining the corner location.

NO



(i) I, WILLIAM F. KELLY  
(Type or print name)

certify that the corner location shown on this record was determined by me or under my direction and control and that this U.S. Public Land Survey Monument Record is correct and complete to the best of my knowledge and belief.

William F. Kelly 12-29-89  
Signature Date