

# U.S. PUBLIC LAND SURVEY MONUMENT RECORD

4320936 0020

HISTORY OF ORIGINAL CORNER ESTABLISHMENT AND SUBSEQUENT RESTORATION AND DESCRIPTION OF ANY RECORD, MONUMENT OCCUPATIONAL, TESTIMONIAL OR OTHER EVIDENCE CONSIDERED:

THE ORIGINAL CORNER WAS SET BY FELLOWS IN 1859. BEARING TREES WERE

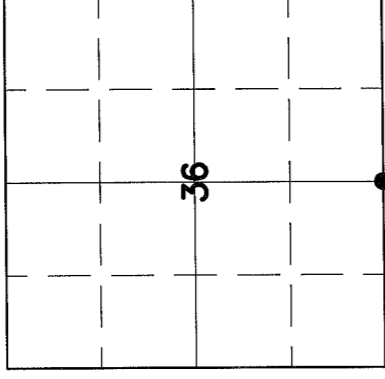
6" PINE S9°E 28 LINKS

14" BIRCH N10W 23 LINKS

NORTH LINE OF SECTION 2 T31N R9E WAS RESURVEYED BY D.A. HINTZ, WHO SET THE 4" CAP MONUMENT.

KELLY USED THIS MONUMENT IN DEC 1988. WE AGREE CLOSELY WITH KELLY'S DISTANCE TO THE SW CORNER OF SECTION 36. ~~██████████~~

● = LOCATION OF CORNER



SECTION 36

TOWNSHIP 32 NORTH, RANGE 9 EAST

TOWN OF VILAS

LANGLADE COUNTY, WISCONSIN

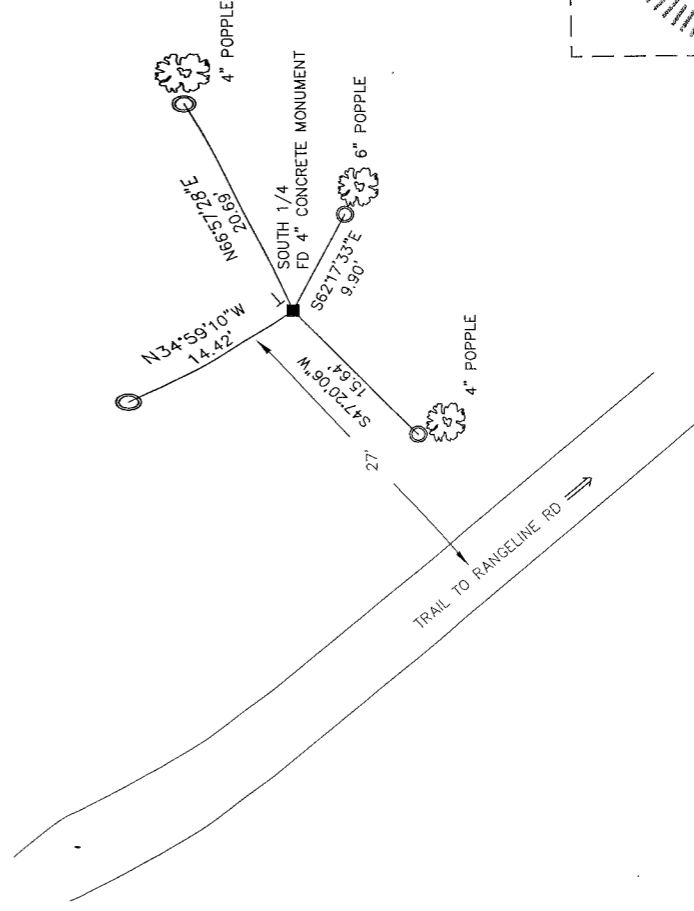
CORNER WAS: (CHECK ALL THAT APPLY)

- RESTORED THROUGH ACCEPTANCE OF AN OBLITERATED EVIDENCE LOCATION
- RESTORED THROUGH ACCEPTANCE OF A FOUND PERPETUATED LOCATION
- CONSIDERED A LOST CORNER AND REESTABLISHED THROUGH LOST CORNER PROPORTIONATE METHODS (INCLUDE A PLAN VIEW DRAWING SHOWING DISTANCES AND DIRECTIONS TO OTHER PUBLIC LAND SURVEY CORNERS USED FOR PROPORTIONING AND DETERMINING THE CORNER LOCATION)
- RESTORED OR REESTABLISHED IN A LOCATION THAT DIFFERS FROM A PREVIOUS RESTORATION OR REESTABLISHMENT (INCLUDE A PLAN VIEW DRAWING AND INDICATE WHAT WAS SET AND/OR FOUND)
- CHECK IF THERE IS ADDITIONAL INFORMATION ON BACK

DESCRIBE THE MONUMENT AND ACCESSORIES USED TO PERPETUATE THE LOCATION OF THE CORNER. (INCLUDE A PLAN VIEW DRAWING AND INDICATE WHAT WAS SET AND/OR FOUND) ALSO INCLUDE FOUR TIES TO THE SECTION CORNER AND DESCRIPTION OF THE TIES.

SET 3/4" X 24" PIPES AT ALL TIE LOCATIONS

BEARING ARE REFERENCED TO THE LANGLADE COUNTY COORDINATE SYSTEM

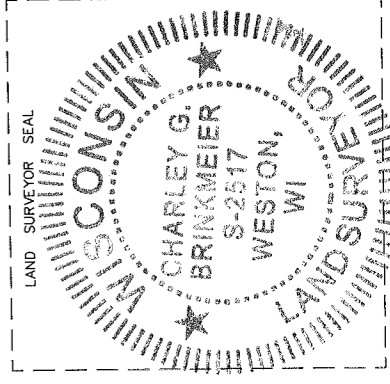


CHARLEY G. BRINKMEIER

(type or print name) CERTIFY THAT THE CORNER LOCATION SHOWN ON THIS RECORD WAS DETERMINED BY ME OR UNDER MY DIRECTION AND CONTROL AND THAT THIS U.S. PUBLIC LAND SURVEY MONUMENT RECORD IS CORRECT AND COMPLETE TO THE BEST OF MY KNOWLEDGE AND BELIEF.

*Charley G. Brinkmeier*  
SIGNATURE

11-28-09  
DATE



223 32-9  
INDEX NO.