

CERTIFIED LAND CORNER RESTORATION

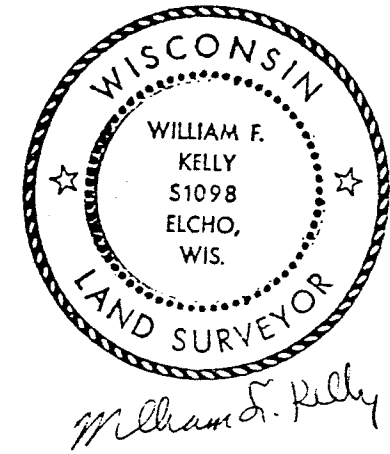
State of Wisconsin }  
County of LANGLADE } ss.

I WILLIAM F. KELLY, do hereby certify that on the 3<sup>RD</sup> day of Nov., 1981, I found evidence of the SW corner of SEC. 31 Township 32, North, Range 10 EAST, Fourth Principal Meridian, as described hereon; and that from this evidence I established a new monument and accessories as described hereon to perpetuate the original location of this corner.

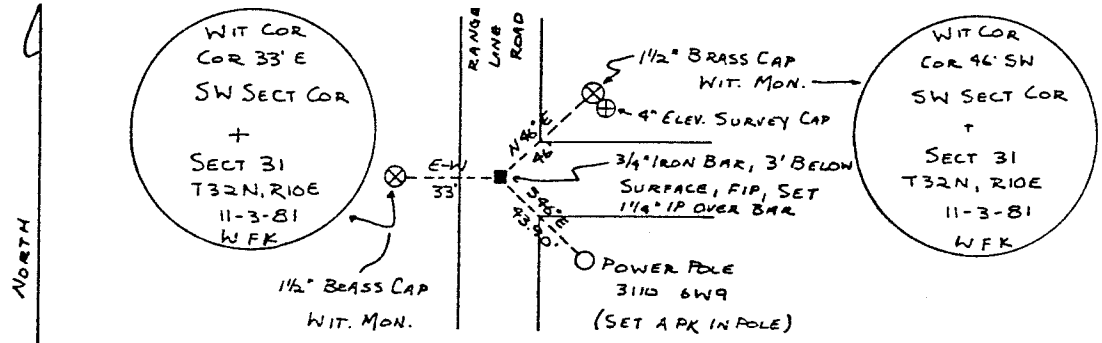
Resident witnesses:  
.....  
.....  
.....

History of original corner establishment:  
ORIGINAL CORNER ESTABLISHED BY  
HIRAM C. FELLOWS IN SEPT., 1860

Description of corner evidence found:  
3/4" IRON BAR FOUND IN PLACE,  
3 FT. BELOW THE SURFACE. SET  
A 1 1/4" IRON PIPE OVER THE BAR.  
SET 2 - 2" x 92" BLACK IRON PIPE  
WITH BRASS CAP WITNESS MONUMENT.



Description of monument and accessories I established to perpetuate the original location of this corner.



Dated at ELCHO, Wis., this 3<sup>RD</sup> day of Nov., 1981.

Signature William F. Kelly Title COUNTY SURVEYOR Registration No. 1098  
(County Surveyor, Registered Land Surveyor, or other duly authorized official)

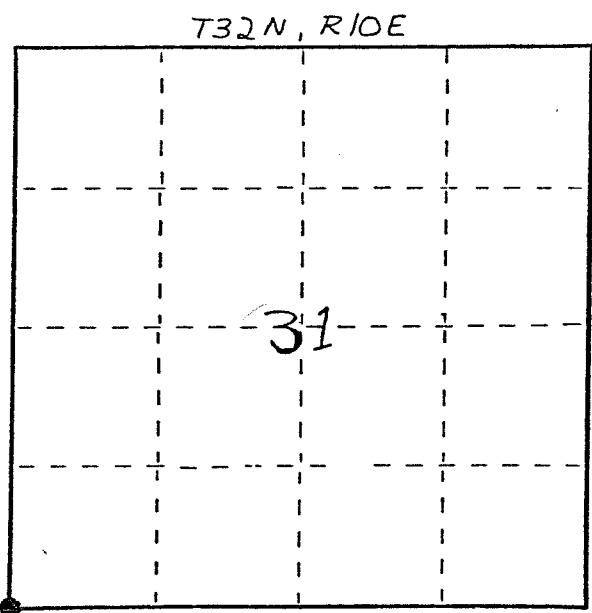
Office of Register of Deeds, County of....., I hereby certify that the within instrument was filed in this office for record on the..... day of....., 19..... at..... o'clock..... M.

(Register of Deeds)

By..... Deputy

FORM 985 H. C. MILLER CO., MILWAUKEE

4320936000



○ = Corner monument restored.