

43209352000

# U.S. PUBLIC LAND SURVEY MONUMENT RECORD

## HISTORY OF ORIGINAL CORNER ESTABLISHMENT AND SUBSEQUENT RESTORATION AND DESCRIPTION OF ANY RECORD, MONUMENT OCCUPANCIAL, TESTIMONIAL OR OTHER EVIDENCE CONSIDERED:

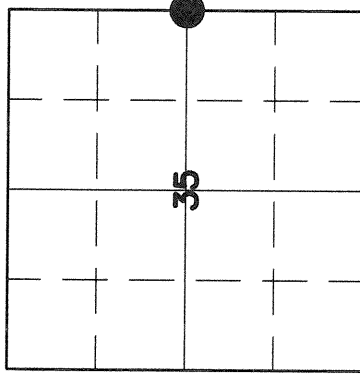
THE ORIGINAL CORNER WAS SET BY FELLOWS IN 1859. BEARING TREES WERE

8" MAPLE S40°W 5 LINKS

10" MAPLE 70°E 10 LINKS

WILLIAM KELLY DID SOME WORK IN SECTION 36 WHERE HE INDICATED THIS CORNER BY A FENCE CONER. WHEN WE WERE AT THE LOCATION, THERE WAS AN OLD FENCE INTERTWINED WITH A 10 FOOT TALL DEER FENCE RUNNING NORTH FROM THIS CORNER. WE SET THE MONUMENT AT THE CORNER OF TWO OLD FENCES, ONE RUNNING NORTH AND ONE RUNNING WEST. THE 10 FOOT TALL DEER FENCE CONTINUE TO THE WEST BUT APPEARED TO CROSS THE E-W 1/4 LINE HEADING TO THE SOUTHWEST.

● = LOCATION OF CORNER

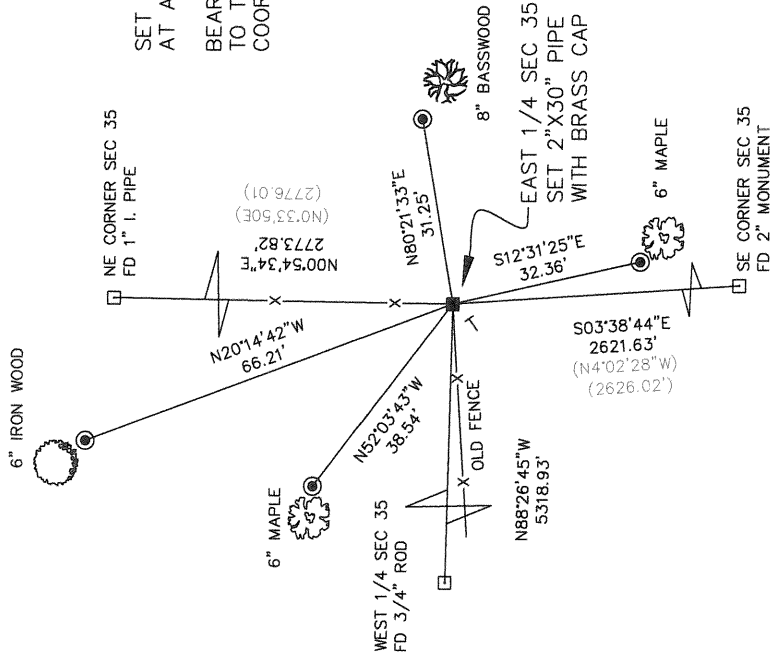


SECTION 35  
TOWNSHIP 32 NORTH, RANGE 9 EAST  
TOWN OF VILAS  
LANGLADE COUNTY, WISCONSIN

## CORNER WAS: (CHECK ALL THAT APPLY)

- RESTORED THROUGH ACCEPTANCE OF AN OBLITERATED EVIDENCE LOCATION
- RESTORED THROUGH ACCEPTANCE OF A FOUND PERPETUATED LOCATION
- CONSIDERED A LOST CORNER AND REESTABLISHED THROUGH LOST CORNER PROPORTIONATE METHODS (INCLUDE A PLAN VIEW DRAWING SHOWING DISTANCES AND DIRECTIONS TO OTHER PUBLIC LAND SURVEY CORNERS USED FOR PROPORTIONING AND DETERMINING THE CORNER LOCATION)
- RESTORED OR REESTABLISHED IN A LOCATION THAT DIFFERS FROM A PREVIOUS RESTORATION OR REESTABLISHMENT (INCLUDE A PLAN VIEW DRAWING AND INDICATE WHAT WAS SET AND/OR FOUND)
- CHECK IF THERE IS ADDITIONAL INFORMATION ON BACK

DESCRIBE THE MONUMENT AND ACCESSORIES USED TO PERPETUATE THE LOCATION OF THE CORNER. (INCLUDE A PLAN VIEW DRAWING AND INDICATE WHAT WAS SET AND/OR FOUND) ALSO INCLUDE FOUR TIES TO THE SECTION CORNER AND DESCRIPTION OF THE TIES.



SET 3/4"X30" RE-BARS AT ALL TIE LOCATIONS  
BEARING ARE REFERENCED TO THE LANGLADE COUNTY COORDINATE SYSTEM

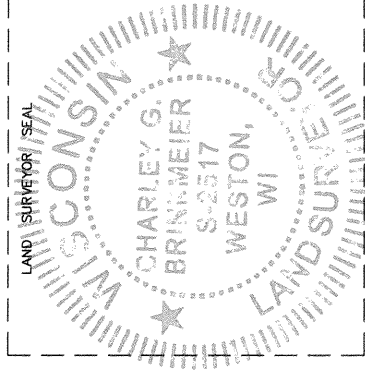


## CHARLEY G. BRINKMEIER

(Type or print name) CERTIFY THAT THE CORNER LOCATION SHOWN ON THIS RECORD WAS DETERMINED BY ME OR UNDER MY DIRECTION AND CONTROL AND THAT THIS U.S. PUBLIC LAND SURVEY MONUMENT RECORD IS CORRECT AND COMPLETE TO THE BEST OF MY KNOWLEDGE AND BELIEF.

*Charley G. Brinkmeier*  
SIGNATURE

12-29-08  
DATE



X 21 32-09  
INDEX NO.