

LANGLADE COUNTY U.S. PUBLIC LAND CORNER RESTORATION

The East 1/4 corner of Section 33, T. 32 N., R. 9 E., Langlade County, WI.

Corner was: (check all that apply)

- Restored through acceptance of an obliterated evidence location.
- Restored through acceptance of a found perpetuated location.
- Determined to be lost and re-established through proportionate methods.
- Show bearings and distances to PLSS corners used for proportioning, and show original distances).
(Show difference in plan view below).

4320933 2000

Describe record evidence, recovered physical evidence, occupational evidence, testimonial evidence and all other evidence considered in the recovery/restoration of the corner.

The original corner was established in 1860 by Hiram C. Fellows. Original bearing trees: birch, 10", N52E, 25 links and a birch, 13", S74W, 15 links. I find no other survey information on this corner since the original. There is a sketch by a forester in County Surveyor files; sketch shows stake at this corner. After considerable searching, I determined the corner to be lost and re-established its location by proportionate measure between the NE and SE corners of Section 33. I set the monument described below.

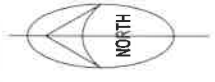
There are existing old blue painted and blazed trees running north and south from here.

Physical description of the monument set:

09/29/17 I set a 2" x 30" flanged bottom, galvanized iron pipe with 3 1/4" brass cap about flush with ground..

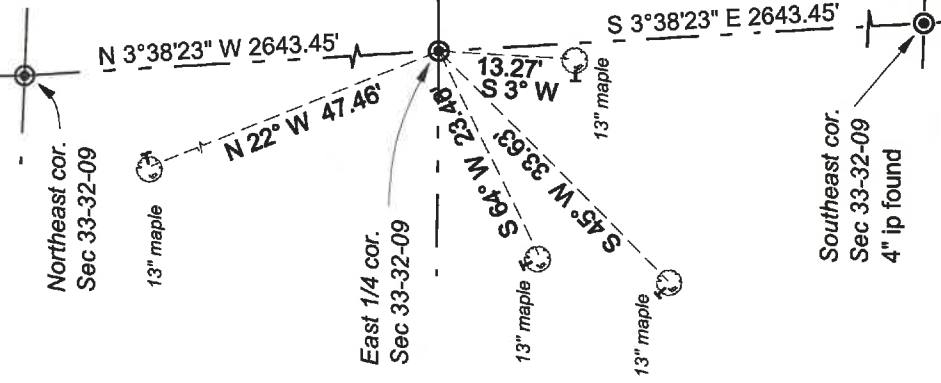
Describe the accessories used to perpetuate the corner. Include a plan view drawing and accessories found/set. Describe measuring point on bearing trees. Show any topographic features that would aid in future recovery of the corner.

Field book 23-35

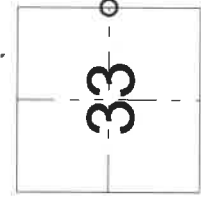


LEGEND

- ⊙ 2" iron pipe with brass cap set unless noted otherwise
- White vinyl sign post 0.8' north of monument
- Steel channel post with sign set 0.8' south of monument.
- Tie bearings are magnetic with hand compass
- Section line bearings shown are Langlade County Coordinate System grid bearings.
- Tie distances are to an aluminum nail in a root crown blaze on the right side of the tree.



4320933 2000
Langlade County Coordinates
NAD83(2011)
N 366250.910
E 565354.04



○ = corner perpetuated
The East 1/4
corner of Section 33,
T. 32 N., R. 9 E.,
Langlade County, WI

I, David E. Tlusty, Registered Land Surveyor, as Langlade County Surveyor, certify that the corner location on this record was determined by me and that this U.S. Public Land Survey Monument Record is correct to the best of my knowledge and belief.