

# LANGLADE COUNTY U.S. PUBLIC LAND CORNER RESTORATION

The South Quarter corner of Section 33, T. 32 N., R. 9 E., Langlade County, WI.

4320933 0020

4320932 0020

**Corner was: (check all that apply)**

- Restored through acceptance of an obliterated evidence location.
- Restored through acceptance of a found perpetuated location.
- Determined to be lost and re-established through proportionate methods.
- Show bearings and distances to PLSS corners used for proportioning, and show original distances).
- Restored/recovered/re-established in a location that differs from a previously established position.

(Show difference in plan view below).

**Describe record evidence, recovered physical evidence, occupational evidence, testimonial evidence and all other evidence considered in the recovery/restoration of the corner.**

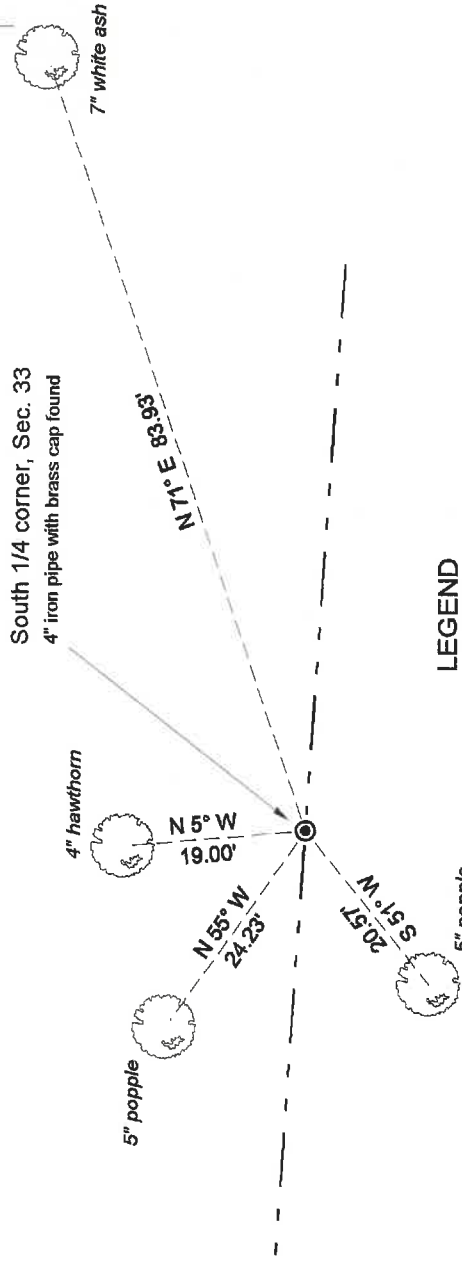
The original corner was established in 1859 by Hiram C. Fellows. Original bearing trees: fir, 12", S 75° W, 20 links and a spruce, 10", N 20° W, 8 links. In the 1930's re-survey of the East half of 31-09, Darwin Hintz re-established this corner by proportionate measurement between the SW corner of Section 32 and the SE corner of Section 34. He set a 4" iron pipe with brass cap. He measured one new bearing object: W. Oak stump, 28", S 65° W, 93.46 links. Dec 2007, after tying into several other corners in the area, I computed a search area for this corner and found it very near the computed location. Did not get exact GPS values on it at this time. The 4" brass topped monument found is in good condition and was accepted as the same location as marked in the 1930's.

**Physical description of the monument set:**

Left the existing monument in place.

**Describe the accessories used to perpetuate the corner. Include a plan view drawing and accessories found/set. Describe measuring point on bearing trees. Show any topographic features that would aid in future recovery of the corner.**

Fieldbook 23-06

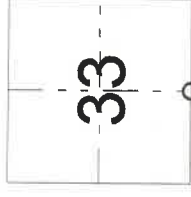


**LEGEND**

- 3/4" x 30" rebar set
- 3/4" rebar found
- ⊙ 4" iron pipe with brass cap found
- ⊥ utility pole
- ⊥ White vinyl sign post
- Bearings shown are magnetic, measured with Suunto hand compass
- Bearing trees measured to alum. nail in a low side blaze as shown. Nailed "Survey Marker" sign to each tree and painted trees blue.



I, David E. Tlusty, Registered Land Surveyor, as Langlade County Surveyor, certify that the corner location on this record was determined by me and that this U.S. Public Land Survey Monument Record is correct to the best of my knowledge and belief.



○ = corner perpetuated  
The South Quarter corner of Section 33, T. 32 N., R. 9 E., Langlade County, WI

Index No.           Z 11 32-09