

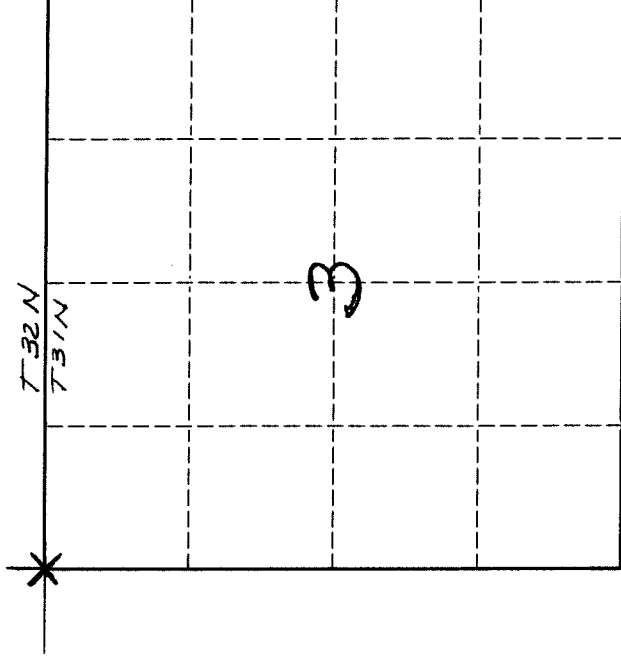
4320933000

U. S. PUBLIC LAND SURVEY MONUMENT RECORD

INSTRUCTIONS:

This record shall show the location of the corner and shall include all of the following nine elements (a through i).

- (a) Identify the corner by reference to the U.S. public land survey system.
- O = Corner monument restored.



Northwest corner of
 Section 3,
 Township 31 North,
 Range 9 East,
 Langlade County,
 Wisconsin.

Section 3, T31N, R9E

- (b) Describe any record evidence, monument evidence, occupational evidence, testimonial evidence or any other material evidence you considered, and whether the monument was found or placed.

The original corner was established in June of 1859, by H. C. Fellows. Original bearing trees were: Spruce, 10", N 44 E, 9 lks; hemlock, 10", N 48 W, 15 lks; hemlock, 12", S 24 W, 40 lks, and a spruce, 6", S 25 E, 18 lks. In, 1937, D. A. Hintz and Hugh St. Claire re-surveyed the east half of this township and set this corner by proportionate methods. No bearing trees were marked. I found a 4" iron pipe with brass cap stamped as shown below.

Dale Carlson, Langlade County Forestry Dept., witnessed corner and BT's.

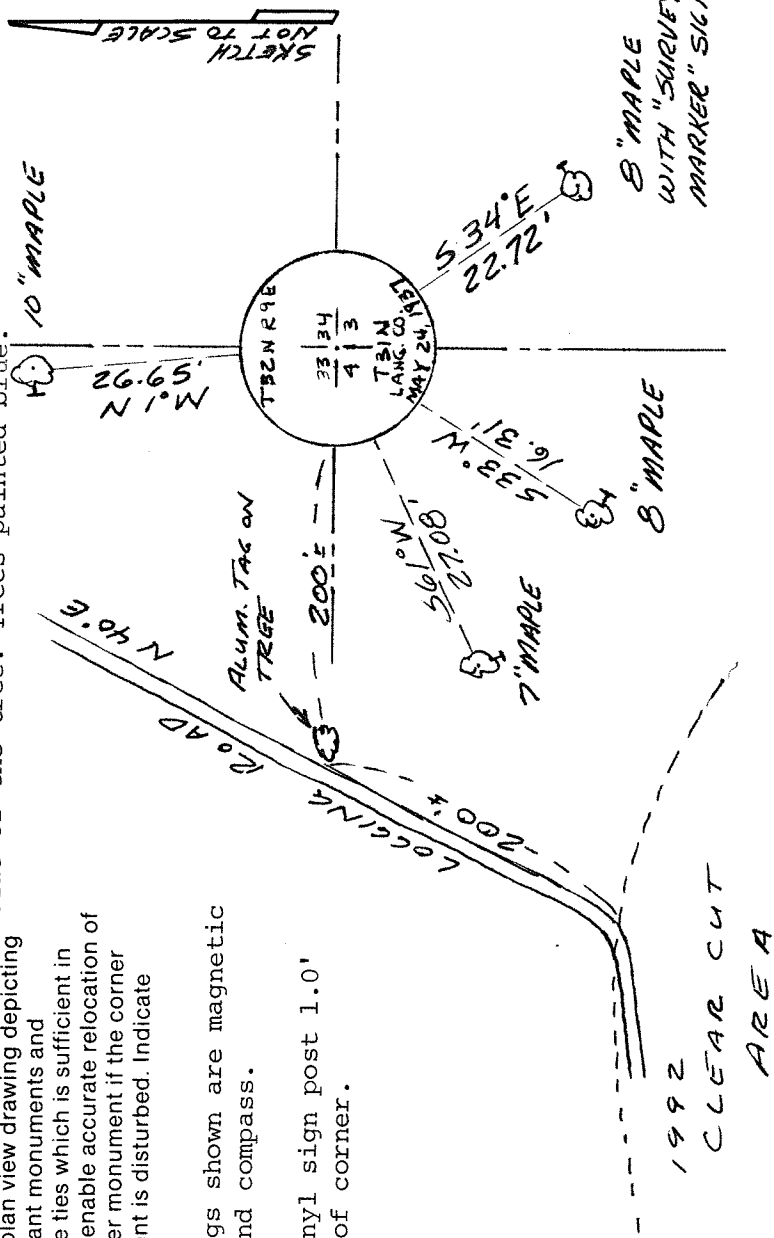
- (c) In the plan view drawing below, provide reference ties to at least 4 witness monuments, or, if the location is within a municipality, to at least 2 witness monuments. (Witness monuments shall be made of concrete, natural stone, iron or other equally durable material.) Describe witness monuments.

- ☉ = bearing tree marked with a high blaze facing the corner, and a low blaze scribed BT facing the corner. Distance is to an aluminum nail in a small low blaze on the left side of the tree. Trees painted blue.

- (d) Show a plan view drawing depicting the relevant monuments and reference ties which is sufficient in detail to enable accurate relocation of the corner monument if the corner monument is disturbed. Indicate north.

Bearings shown are magnetic with hand compass.

Set vinyl sign post 1.0' north of corner.



A 13
31-9

8" MAPLE
WITH "SURVEY
MARKER" SIGN.

8" MAPLE

1992
CLEAR CUT
AREA

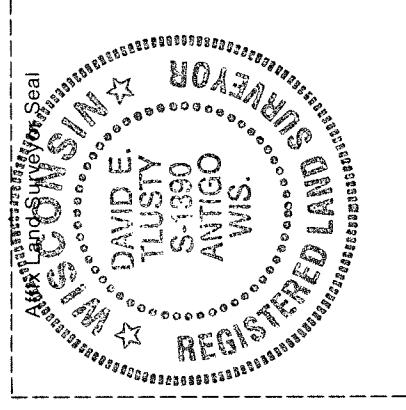
43209330000

Describe any material discrepancy between the location of the corner as restored or reestablished and the location of that corner as previously restored or reestablished by distance and direction. Show the discrepancy on the plan view drawing under (d), above. Show the distances between the corner as previously restored or reestablished and (1) the corner as restored or reestablished, and (2) to at least 2 of the witness monuments shown on the drawing in (d), above.

No discrepancy.

- (f) Was the corner restored through acceptance of (1) an obliterated evidence location, or, (2) a found perpetuated location?
A found perpetuated location.

- (g & h) Was the corner reestablished through lost corner proportionate methods? If so, show the method, including the directions and distances to other public land survey corners used as evidence or used for proportioning in determining the corner location.
No.



(i) I, David E. Tlusty, Langlade County Surveyor,
(type or print name)

certify that the corner location shown on this record was determined by me or under my direction and control and that this U.S. Public Land Survey Monument Record is correct and complete to the best of my knowledge and belief.

David E. Tlusty March 9, 1993
Signature Date