

LANGLADE COUNTY U.S. PUBLIC LAND CORNER RESTORATION

The Southeast corner of Section 32, T. 32 N., R. 9 E., Langlade County, WI.

Corner was: (check all that apply)

- Restored through acceptance of an obliterated evidence location.
- Restored through acceptance of a found perpetuated location.
- Determined to be lost and re-established through proportionate methods.
- Show bearings and distances to PLSS corners used for proportioning, and show original distances).
(Show difference in plan view below).

4320932 0000

Describe record evidence, recovered physical evidence, occupational evidence, testimonial evidence and all other evidence considered in the recovery/restoration of the corner.

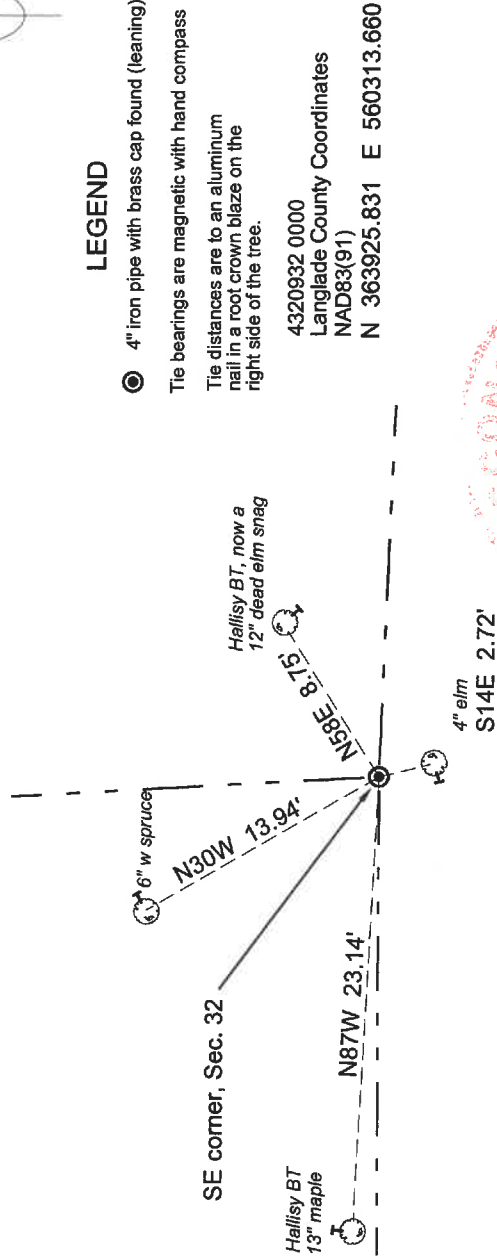
The original corner was established in 1859 by Hiram C. Fellows. Original bearing trees: pine, 12", S66W, 20 links; a maple, 9", S67E, 14 links; a birch, 9", N30E, 20 links and a sugar, 15", N46W, 46 links. In the 1930's resurvey of the East half of 31-09, no original evidence of this corner was found and the corner position was re-established by proportionate methods. In 1978, Ray Hallisy found the 4" brass capped monument set in 1937. He made 4 bearing trees. Dec. 14, 2007 I found the monument leaning and frozen into the ground. I set a 60d nail at the apparent straightened location and referenced it as shown below.

Physical description of the monument set:

I set a 40d spike as a temporary monument for the corner.

Describe the accessories used to perpetuate the corner. Include a plan view drawing and accessories found/set. Describe measuring point on bearing trees. Show any topographic features that would aid in future recovery of the corner.

Field book 23-15



LEGEND

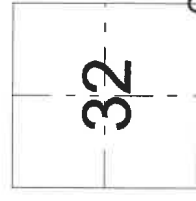
- 4" iron pipe with brass cap found (leaning)
- Tie bearings are magnetic with hand compass
- Tie distances are to an aluminum nail in a root crown blaze on the right side of the tree.

4320932 0000
Langlade County Coordinates
NAD83(91)
N 363925.831 E 560313.660

4" elm
S14E 2.72'



David E. Tlusty
1/10/2020



O = corner perpetuated
The Southeast corner of Section 32, T. 32 N., R. 9 E., Langlade County, WI

Index No. Z9 32-09

I, David E. Tlusty, Registered Land Surveyor, as Langlade County Surveyor, certify that the corner location on this record was determined by me and that this U.S. Public Land Survey Monument Record is correct to the best of my knowledge and belief.

CERTIFIED LAND CORNER RESTORATION

Index No. A-9
319

State of Wisconsin }
County of Langlade } ss.

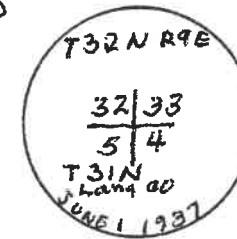
I Raymond J. Hallisy, do hereby certify that on the 3rd day of June, 1978, I found evidence of the Section corner corner of 32, 33, 4, 5 Township 31 4 32, North, Range 9 EAST, Fourth Principal Meridian, as described hereon; and that from this evidence I established a new monument and accessories as described hereon to perpetuate the original location of this corner.

History of original corner establishment:

ESTABLISHED IN 1937 RESURVEY

Description of corner evidence found:

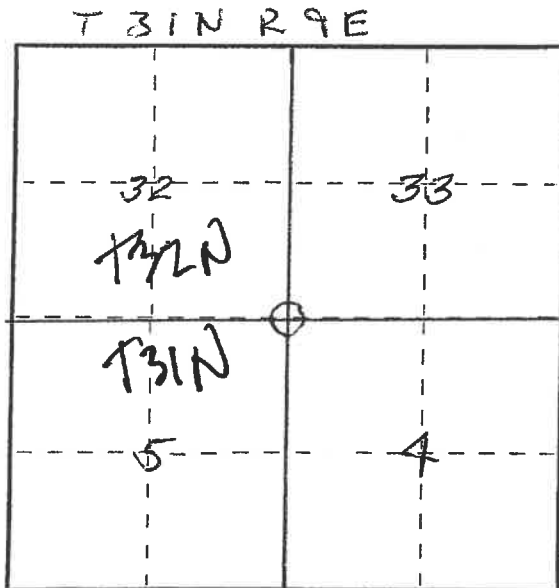
4 inch BRASS CAP With Rock mound



Resident witnesses:

Description of monument and accessories I established to perpetuate the original location of this corner.

Now B.T.'s
Red Maple 8" 90°W 22' 3"
White Spruce 11" N43°W 32' 9"
ELM 7" N58°E 9' 2"
MAPLE 7" S20°W 38' 11"



○ = Corner monument restored.

Dated at Antigo, Wis., this 3rd day of June, 1978

Signature Raymond J. Hallisy Title Registered Land Surveyor Registration No. 5-685
(County Surveyor, Registered Land Surveyor, or other duly authorized official)

Office of Register of Deeds, County of _____, I hereby certify that the within instrument was filed in this office for record on the _____ day of _____, 19____ at _____ o'clock _____ M.

(Register of Deeds)

By _____ Deputy

4320932000