

CERTIFIED LAND CORNER RESTORATION

Index No. W-5

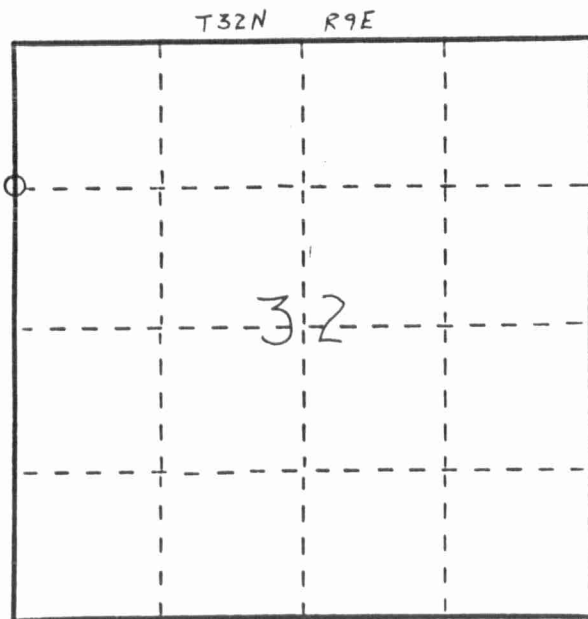
State of Wisconsin }
 County of Langlade } ss.

I William F. Kelly, do hereby certify that on the 31st day of December, 1979, I found evidence of the W. 1/16 corner of NW 1/4 of Section 32 Township 32, North, Range 9 East, Fourth Principal Meridian, as described hereon; and that from this evidence I established a new monument and accessories as described hereon to perpetuate the original location of this corner.

Resident witnesses:

.....

FORM 985 R. E. MILLER CO., MILWAUKEE



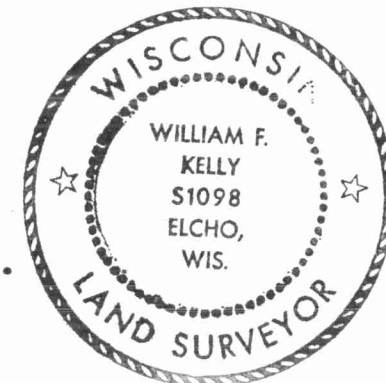
○ = Corner monument restored.

History of original corner establishment:

Set nail (temporary due to frost in roadway) on line between and equidistant from NW corner and W¹/₄ corner of Section 32.

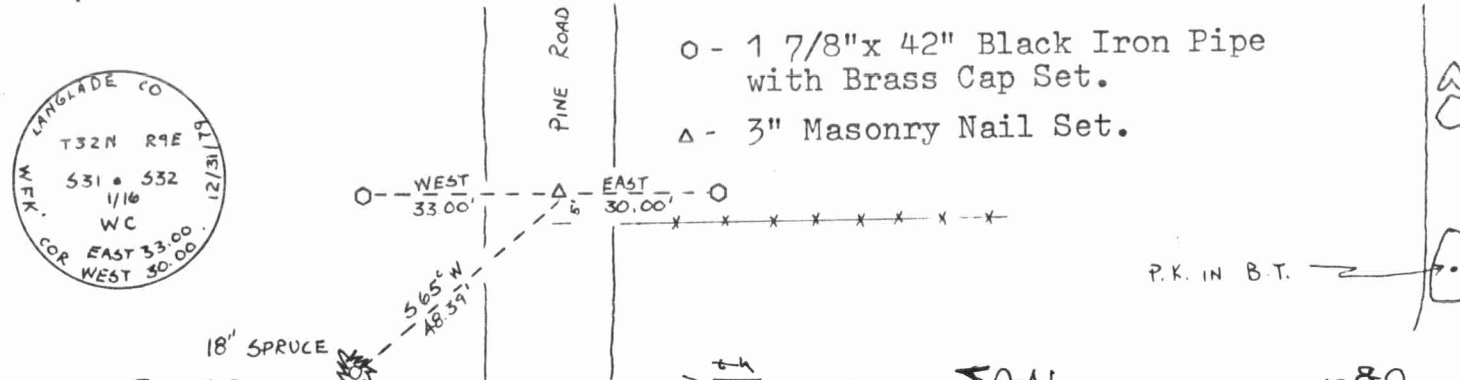
Description of corner evidence found:

Found no evidence of corner having previously been set.



William F. Kelly

Description of monument and accessories I established to perpetuate the original location of this corner.



- - 1 7/8" x 42" Black Iron Pipe with Brass Cap Set.
- Δ - 3" Masonry Nail Set.

Dated at ELCHO, Wis., this 7th day of JAN, 1980

Signature William F. Kelly Title County Surveyor Registration No. 1098
 (County Surveyor, Registered Land Surveyor, or other duly authorized official)

Office of Register of Deeds, County of....., I hereby certify that the within instrument was filed in this office for record on the..... day of....., 19..... at..... o'clock..... M.

(Register of Deeds)

By..... Deputy