

CERTIFIED LAND CORNER RESTORATION

Index No. X - 5

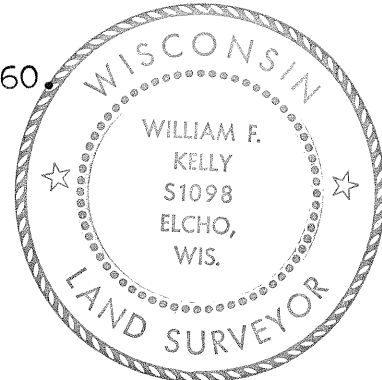
State of Wisconsin }
County of Languade } ss.

I William F. Kelly, do hereby certify that on the 31st day of December, 1979, I found evidence of the West 1/4 corner of Section 32 Township 32 North, Range 9 East, Fourth Principal Meridian, as described hereon; and that from this evidence I established a new monument and accessories as described hereon to perpetuate the original location of this corner.

Resident witnesses:

History of original corner establishment:

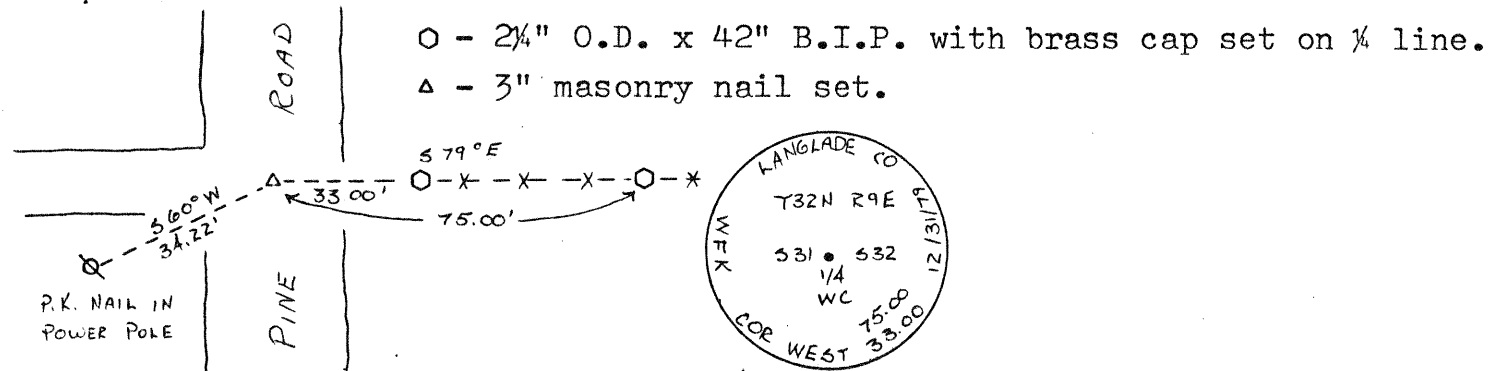
Corner originally set by H. C. Fellows in September, 1860.



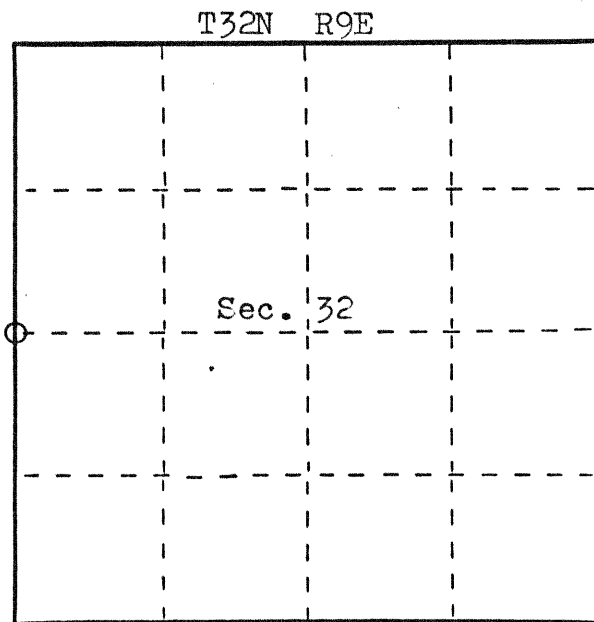
Description of corner evidence found:

Corner called for in M. Hutchinson notes dated October 31, 1940. Hutchinson did not call for a specific type of monument. We searched with metal detector but found no monument. Set nail (temporary due to frost in roadway) at intersection of centerline of road and old fenceline extended. Corner checked good for distance from both NW and SW corners of Section 32.

Description of monument and accessories I established to perpetuate the original location of this corner.



FORM 985 R. C. MILLER CO., MILWAUKEE



○ = Corner monument restored.

Dated at ELCHO, Wis., this 7th day of JAN, 1980.

Signature William F. Kelly Title County Surveyor Registration No. 1098
(County Surveyor, Registered Land Surveyor, or other duly authorized official)

Office of Register of Deeds, County of _____, I hereby certify that the within instrument was filed in this office for record on the _____ day of _____, 19____ at _____ o'clock _____ M.

(Register of Deeds)

By _____ Deputy