

CERTIFIED LAND CORNER RESTORATION

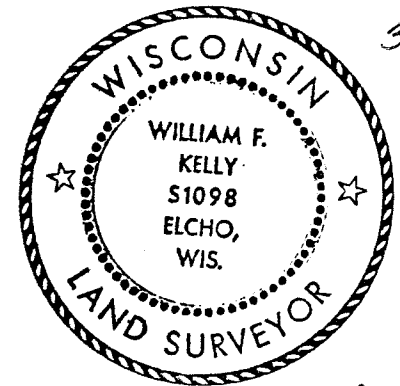
Index No. A-5

31-9

State of Wisconsin }
County of Langlade } ss.

History of original corner establishment:

Corner originally set by James Marsh in May, 1851.
Corner was reset by D. A. Hintz in 1937 resurvey.



I William F. Kelly, do hereby certify that on the 31st day of December, 1979, I found evidence of the Southwest corner of Section 32 Township 32, North, Range 9 East, Fourth Principal Meridian, as described hereon; and that from this evidence I established a new monument and accessories as described hereon to perpetuate the original location of this corner.

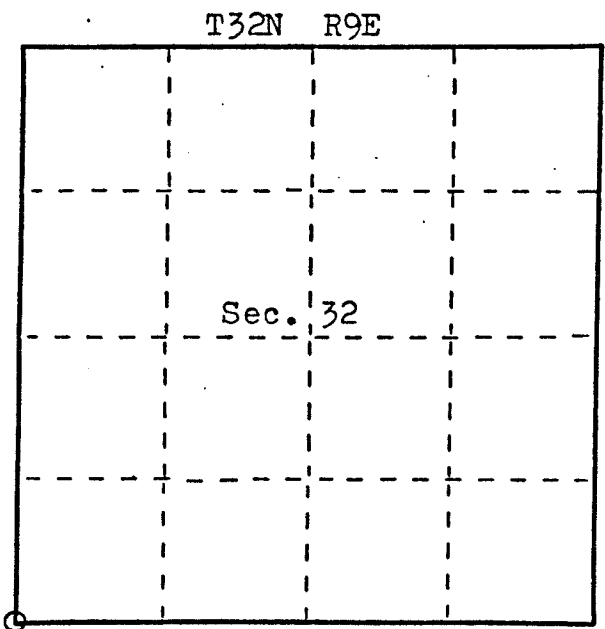
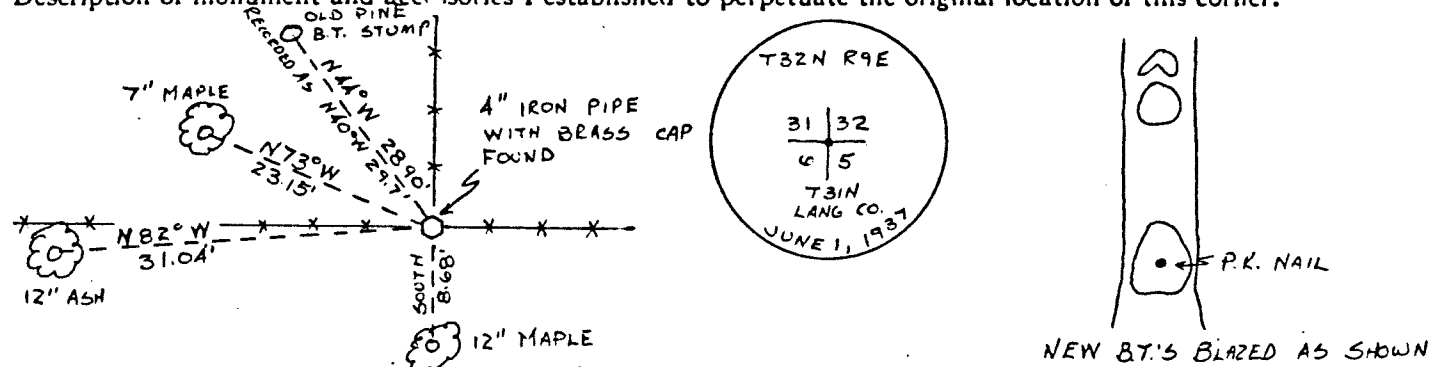
Description of corner evidence found:

Found 4" iron pipe with brass cap and old bearing tree stump *William F. Kelly* set by Hintz.

Resident witnesses:

.....
.....
.....

Description of monument and accessories I established to perpetuate the original location of this corner.



○ = Corner monument restored.

Dated at ELCHO, Wis., this 7th day of JAN., 1980.

Signature William F. Kelly Title County Surveyor Registration No. 1098
(County Surveyor, Registered Land Surveyor, or other duly authorized official)

Office of Register of Deeds, County of....., I hereby certify that the within instrument was filed in this office for record on the..... day of....., 19..... at..... o'clock..... M.

.....
(Register of Deeds)

By..... Deputy

FORM 985 R. E. MILLER CO., MILWAUKEE 43209310000