

CERTIFIED LAND CORNER RESTORATION

Index No. T-5

State of Wisconsin }
County of LANGLADE } ss.

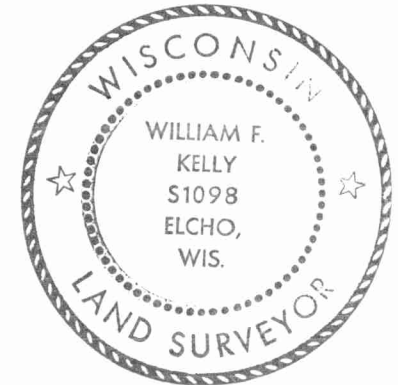
I WILLIAM F. KELLY, do hereby certify that on the 1st day of JUNE, 1981, I found evidence of the WEST 1/4 corner of SEC. 29 Township 32, North, Range 9 EAST, Fourth Principal Meridian, as described hereon; and that from this evidence I established a new monument and accessories as described hereon to perpetuate the original location of this corner.

Resident witnesses:

.....
.....
.....

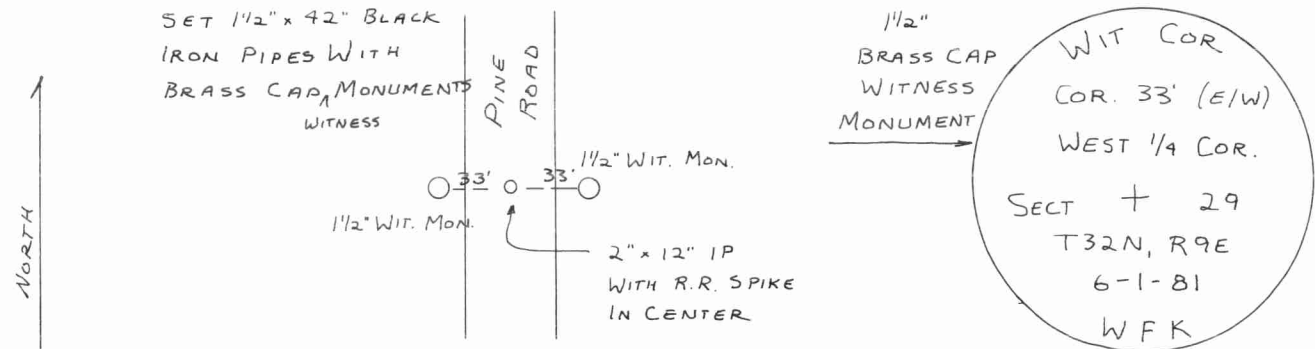
History of original corner establishment:
ORIGINAL CORNER ESTABLISHED
IN SEPT., 1860 BY HIRAM C. FELLOWS.

Description of corner evidence found:
LOCATED IRON ROD PROPERTY CORNER
1 1/2 RODS EAST OF CORNER

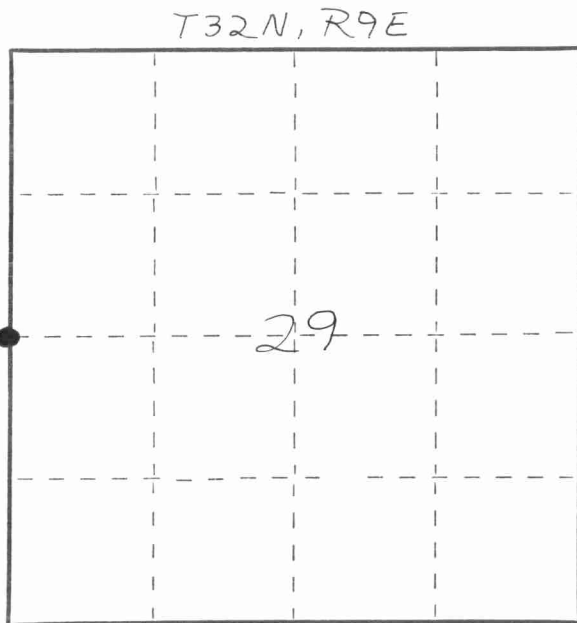


William F. Kelly

Description of monument and accessories I established to perpetuate the original location of this corner.



FORM 985 H. C. MILLER CO., MILWAUKEE



○ = Corner monument restored.

Dated at ELCHO, Wis., this 2ND day of JUNE, 1981.

Signature William F. Kelly Title COUNTY SURVEYOR Registration No. 1098
(County Surveyor, Registered Land Surveyor, or other duly authorized official)

Office of Register of Deeds, County of....., I hereby certify that the within instrument was filed in this office for record on the..... day of....., 19..... at..... o'clock..... M.

(Register of Deeds)

By..... Deputy