

LANGLADE COUNTY U.S. PUBLIC LAND CORNER RESTORATION

The Southeast corner of Section 30, T. 32 N., R. 9 E., Langlade County, WI.

Corner was: (check all that apply)

- Restored through acceptance of an obliterated evidence location.
- Restored through acceptance of a found perpetuated location.
- Determined to be lost and re-established through proportionate methods.
- Show bearings and distances to PLSS corners used for proportioning, and show original distances).
(Show difference in plan view below).

4320930 0000

Describe record evidence, recovered physical evidence, occupational evidence, testimonial evidence and all other evidence considered in the recovery/restoration of the corner.

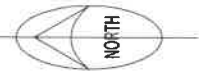
The original corner was established by H. C. Fellows in 1860. Original bearing trees: birch, 9" S18W, 20 links and a birch, 12", N14E, 9 links.
Former surveyor Kelly, in 1980, set the corner at the intersection of centerlines of the roadways, per statement he received from local resident, Herman Peterson. Prior to that, B.F. Dorr found original BT'S and set a piece of pump for the corner. Kelly stated that the distance to the NE corner of Section 30 agrees with Dorrs distance. Kelly set two witness monuments and a bearing tree NE. 04/29/08 D. Tlusty found the SE witness monument in good condition and replaced the damaged the west witness monument. I re-set the corner from those two witness monuments and set more references as shown below.

Physical description of the monument set:

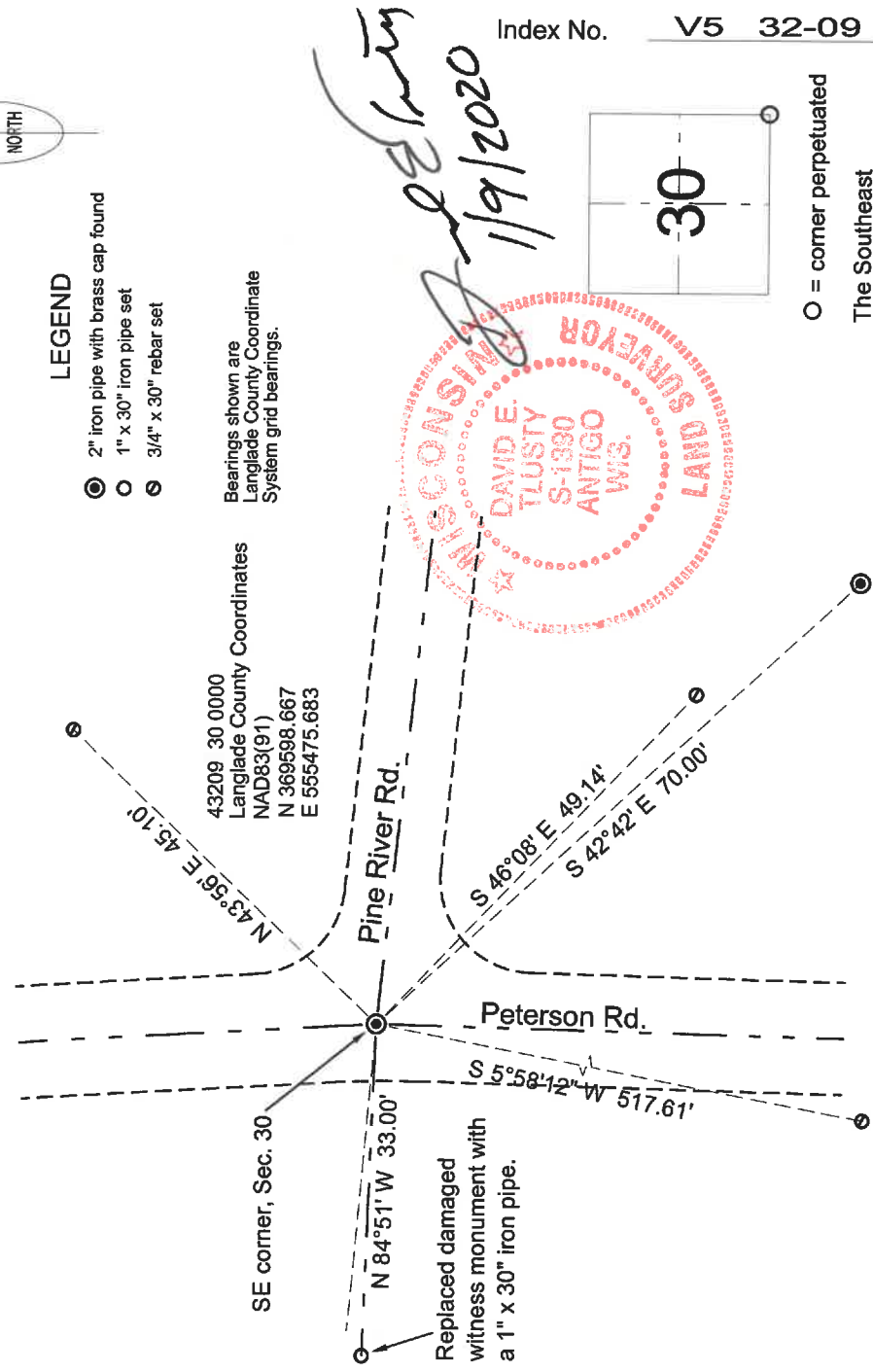
I set a 40d spike as a temporary monument for the corner.

Describe the accessories used to perpetuate the corner. Include a plan view drawing and accessories found/set. Describe measuring point on bearing trees. Show any topographic features that would aid in future recovery of the corner.

Field book 23-12



- LEGEND**
- ⊙ 2" iron pipe with brass cap found
 - 1" x 30" iron pipe set
 - ⊖ 3/4" x 30" rebar set



I, David E. Tlusty, Registered Land Surveyor, as Langlade County Surveyor, certify that the corner location on this record was determined by me and that this U.S. Public Land Survey Monument Record is correct to the best of my knowledge and belief.

CERTIFIED LAND CORNER RESTORATION

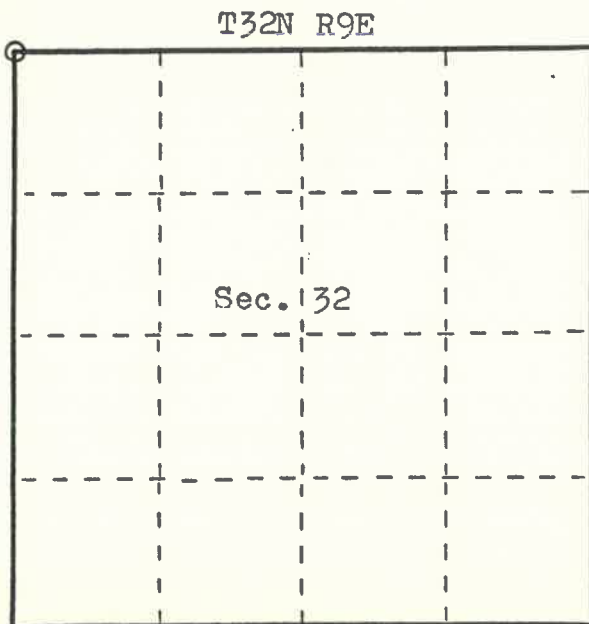
Index No. V-5

State of Wisconsin }
 County of Langlade } ss.

I William F. Kelly, do hereby certify that on the 31st day of December, 1979, I found evidence of the Northwest corner of Section 32 Township 32, North, Range 9 East, Fourth Principal Meridian, as described hereon; and that from this evidence I established a new monument and accessories as described hereon to perpetuate the original location of this corner.

Resident witnesses:

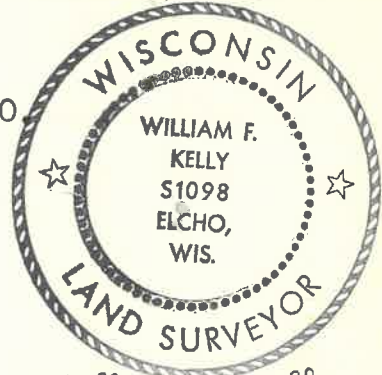
Herman Peterson



FORM 985 S. E. M.L.D. CO. - BUREAU, ILL.

History of original corner establishment:

Corner originally set by H. C. Fellows in September, 1860

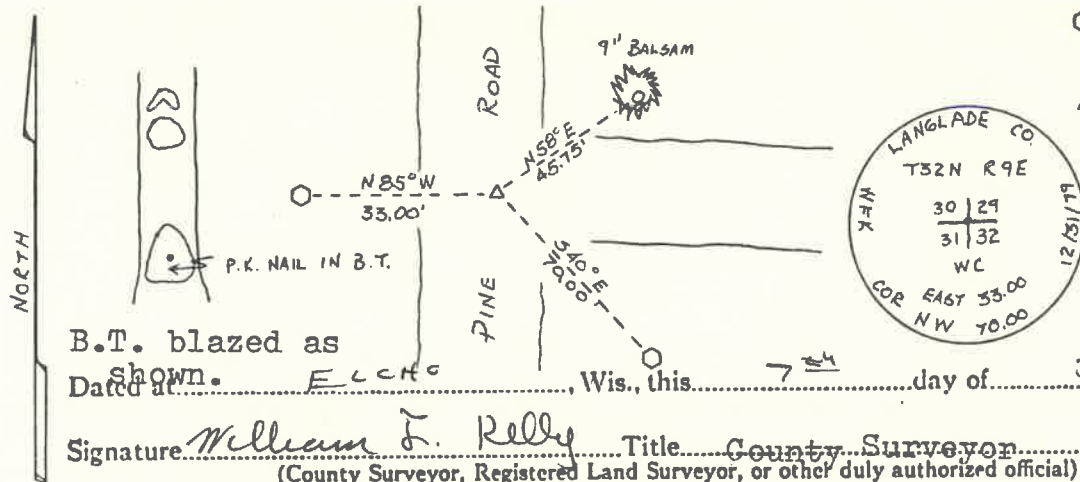


Description of corner evidence found:

Corner was reset by B. F. Dorr by using original B.T.'s. Dorr set a piece of pump 3" x 18". We searched for pump but could not locate it. Resident (Herman Peterson) said corner was at intersection of roads. We set nail (temporary due to frost in road) at intersection of centerline of roadways. Distance to NW corner of Section 29 agrees with Dorr's.

Description of monument and accessories I established to perpetuate the original location of this corner.

- - 2 1/4" O.D. x 42" B.I.P. with Brass Cap set.
- △ - 3" masonry nail set.



B.T. blazed as

shown. ELCHO, Wis., this 7th day of JAN., 1980

Signature William F. Kelly Title County Surveyor Registration No. 1098
 (County Surveyor, Registered Land Surveyor, or other duly authorized official)

Office of Register of Deeds, County of....., I hereby certify that the within instrument was filed in this office for record on the.....day of....., 19..... at.....o'clock..... M.

(Register of Deeds)

By.....Deputy

○ = Corner monument restored.