

CERTIFIED LAND CORNER RESTORATION

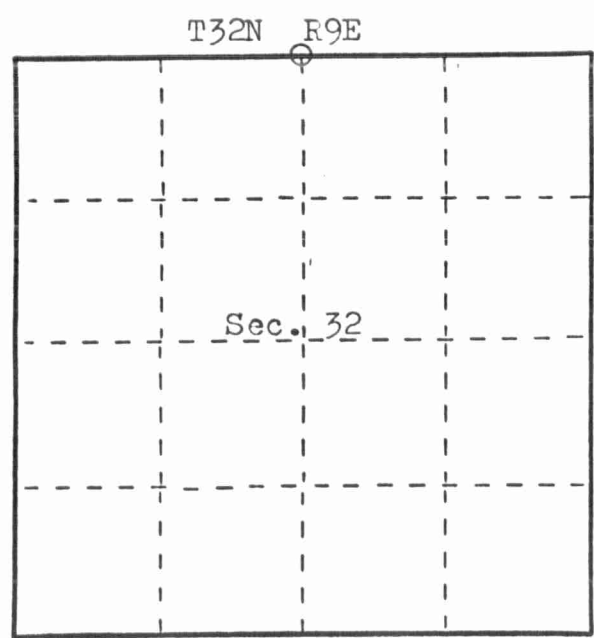
Index No. V-7

State of Wisconsin }
 County of Langlade } ss.

I William F. Kelly, do hereby certify that on the 28th day of December, 1979, I found evidence of the North 1/4 corner of Section 32 Township 32, North, Range 9 East, Fourth Principal Meridian, as described hereon; and that from this evidence I established a new monument and accessories as described hereon to perpetuate the original location of this corner.

Resident witnesses:

FORM 985 E. C. MILLER CO., MILWAUKEE



○ = Corner monument restored.

History of original corner establishment:

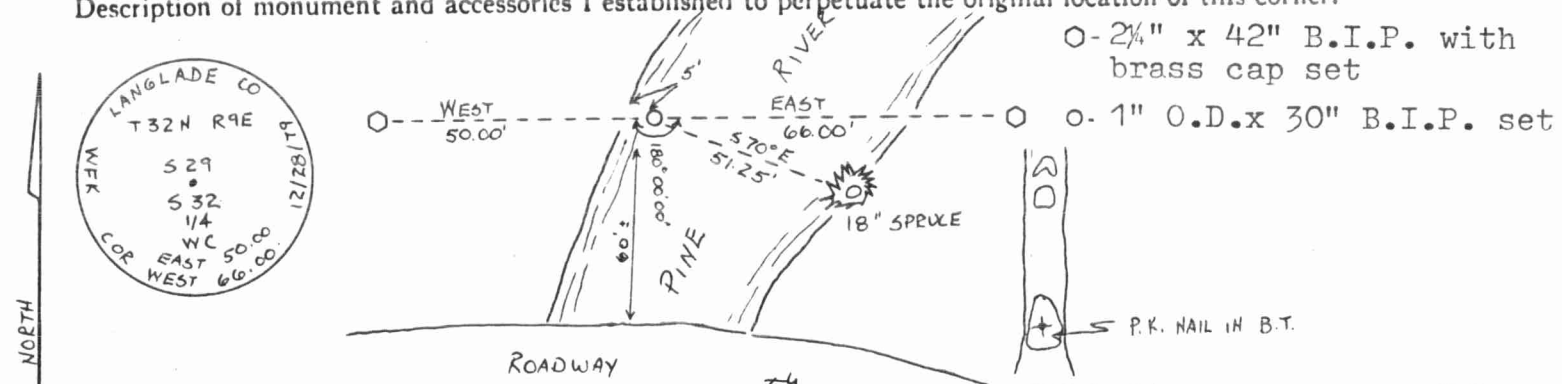
Corner originally set by H. C. Fellows in September, 1860.



Description of corner evidence found:

Could find no evidence of corner. Set corner by single proportion between NW corner and NE corner of Section 32. *William F. Kelly*

Description of monument and accessories I established to perpetuate the original location of this corner.



Dated at ELCHO, Wis., this 7th day of JAN, 1980.

Signature William F. Kelly Title County Surveyor Registration No. 1098
 (County Surveyor, Registered Land Surveyor, or other duly authorized official)

Office of Register of Deeds, County of, I hereby certify that the within instrument was filed in this office for record on the day of, 19..... at o'clock M.

(Register of Deeds)

By Deputy