

LANGLADE COUNTY U.S. PUBLIC LAND CORNER RESTORATION

The Southeast corner of Section 28, T. 32 N., R. 9 E., Langlade County, WI.

Corner was: (check all that apply)

- Restored through acceptance of an obliterated evidence location.
- Restored through acceptance of a found perpetuated location.
- Determined to be lost and re-established through proportionate methods.
- Show bearings and distances to PLSS corners used for proportioning, and show original distances).
(Show difference in plan view below).

4320928 0000

Describe record evidence, recovered physical evidence, occupational evidence, testimonial evidence and all other evidence considered in the recovery/restoration of the corner.

The original corner was established in 1860 by Hiram C. Fellows. Original bearing trees: aspen, 5", S45°E, 10 links and an elm, 20", N6°W, 5 links. There are no other survey records on this corner. From past experience in retracing Fellows and having extensive section line measurements within this project, I believe the original government surveyor took many shortcuts and actually didn't measure many lines in this township as evidenced by inaccurate and/or a general lack of topographic calls, primarily to streams/creeks. In my opinion, double proportioning this corner would result in placement of this corner and other reliant quarter corners in positions not at all representative of the positions of the original government corners. I re-established this corner on a westerly extension of a line from the SE corner of Sec. 27 through the S1/4 corner of Sec. 27 and at the original government survey distance from the SE corner of Sec. 27. My re-established position works well with the original gov't. survey distance to the south and is in general alignment agreement with the NE and E1/4 corners of Section 28. The only original creek call is to the North, 9 chains (594'). I measure 310' ±, a shortfall of 274 feet. This should be of no surprise as the original government survey distance between two well defined creeks between Section 27 and 28, is long by approximately 810 feet. I set the monument described below.

Physical description of the monument set:

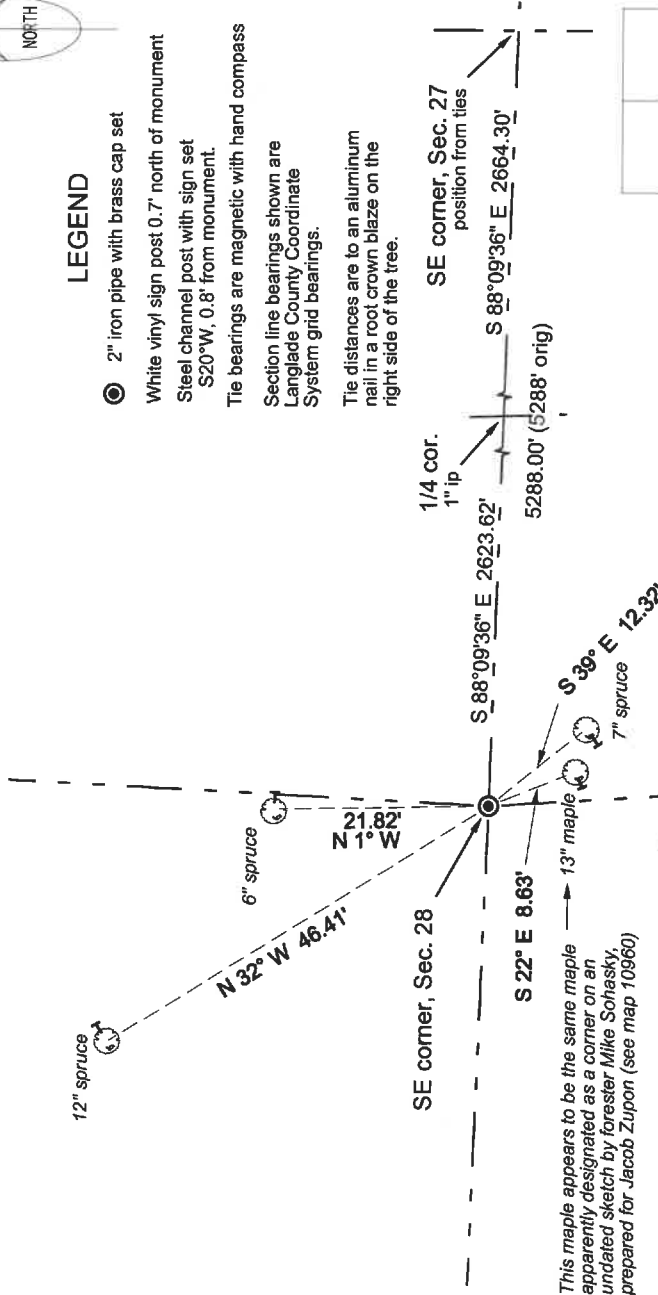
09/29/17 I set a 2" x 30" flanged bottom, galvanized iron pipe with 3 1/8" brass cap about flush with ground..

Describe the accessories used to perpetuate the corner. Include a plan view drawing and accessories found/set. Describe measuring point on bearing trees. Show any topographic features that would aid in future recovery of the corner.

Field book 23-20



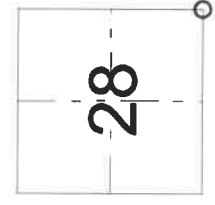
- LEGEND**
- 2" iron pipe with brass cap set
 - White vinyl sign post 0.7" north of monument
 - Steel channel post with sign set S20°W, 0.8' from monument.
 - Tie bearings are magnetic with hand compass
 - Section line bearings shown are Langlade County Coordinate System grid bearings.
 - Tie distances are to an aluminum nail in a root crown blaze on the right side of the tree.



This maple appears to be the same maple apparently designated as a corner on an undated sketch by forester Mike Sohasky, prepared for Jacob Zupon (see map 10960)



4320928 0000
Langlade County Coordinates
NAD83(2011)
N 368889.04
E 565186.23



○ = corner perpetuated
The Southeast corner of Section 28, T. 32 N., R. 9 E., Langlade County, WI

I, David E. Tlusty, Registered Land Surveyor, as Langlade County Surveyor, certify that the corner location on this record was determined by me and that this U.S. Public Land Survey Monument Record is correct to the best of my knowledge and belief.